

INTERNATIONAL WUSHU FEDERATION

IWUF

INTERNATIONAL WUSHU INVITATIONAL TOURNAMENT 2024

Jiangyin, Jiangsu, China

REGULATIONS



恒源祥®

IWUF Global Partner



IWUF Global Sponsor

TaiShan 泰山

IWUF Global Supplier

WESING 九日山

IWUF Global Supplier



CONTENTS

— 1 — GENERAL INFORMATION

[I. INTRODUCTION](#)

[II. GENERAL PROGRAM](#)

[III. GENERAL INFORMATION](#)

[IV. DATES](#)

[V. VENUE](#)

— 2 — CHAMPIONSHIPS INFORMATION

[VI. COMPETITION EVENTS](#)

[VII. QUALIFICATIONS](#)

[VIII. PARTICIPATION METHODS](#)

[IX. COMPETITION RULES](#)

[X. UNIFORMS & EQUIPMENT](#)

[XI. PLACING & AWARDS](#)

[XII. REGISTRATION](#)

[XIII. ARRIVAL & ACCREDITATION](#)

[XIV. TECHNICAL MEETING](#)

[XV. DRAWING OF LOTS](#)

[XVI. WEIGH-IN](#)

[XVII. TECHNICAL OFFICIALS](#)

[XVIII. SUPERVISORY COMMISSION](#)

— 3 — TEAM INFORMATION

[XIX. ACCOMMODATION](#)

[XX. TRANSPORTATION](#)

[XXI. FINANCIAL CONDITIONS](#)

[XXII. PASSPORTS & VISA REQUIREMENTS](#)

[XXIII. DOPING CONTROL](#)

[XXIV. RESPONSIBILITY OF MEMBER FEDERATIONS](#)

[XXV. APPENDIX](#)

— 4 — ADDITIONAL WORLD CUP QUALIFIED QUOTAS

[XXVI. GENERATION OF ADDITIONAL WORLD CUP
QUALIFIED QUOTAS](#)

—1—

GENERAL INFORMATION





I. INTRODUCTION

Approved by IWUF Executive Board, the International Wushu Invitational Tournament 2024 will be hosted by IWUF and organized and supported by Chinese Wushu Association in Jiangyin, China, from April 21 to 26. This tournament will serve as the supplementary qualifier for 3rd Taolu World Cup 2024 and 10th Sanda World Cup 2024, addressing the concerns of federations unable to participate in the 16th World Wushu Championships primarily due to visa issues.

Considering that the newly Technical Committee is not yet in place, the key points of the competition regulations have been approved by IWUF Executive Board. Overall, this regulations continues the competition events and methods from the 16th World Wushu Championships, aiming to uphold fairness and consistency in the qualification process for the World Cups. Additionally, it provides additional clarification on the methods for determining qualification quotas for the World Cups.

For more information on this event, please visit the IWUF official website <http://www.iwuf.org/>, also visit the official social media, [Facebook](#), [Instagram \(IG\)](#), [YouTube](#).

II. GENERAL PROGRAM

Date	Time	Content	Location
21 April	All Day	Team Arrival and Registration	Taoyuan Resort Hotel Pegasus Watertown Hotel
		TC & JC Members Arrival	Pegasus Sports Hotel
22 April	All Day	Team Arrival and Registration	Taoyuan Resort Hotel Pegasus Watertown Hotel
		Judge Arrival and Registration	Pegasus Sports Hotel
		EB Members Arrival and Registration	Marrisle Hotel
	Morning	IWUF Technical Committee Meeting	Precious Horse Ballroom
	Afternoon	IWUF Judges' Committee Meeting	Happiness Horse Ballroom
	Evening	Joint Meeting - TC & JC	Precious Horse Ballroom
23 April	All Day	Athletes Training	Culture and Sports Indoor Stadium
	Morning	Sanda Weigh-in	Pegasus Watertown Hotel
		Judges' Refresher Course	TBC
		Technical Meeting / Drawing of Lots	TBC
	Afternoon	41 ST IWUF Executive Board Meeting	Precious Horse Ballroom
	Evening	Opening Ceremony / Welcome Dinner	TBC
24 April	All Day	Sanda Weigh-in	Pegasus Watertown Hotel
		Taolu & Sanda Competition	Culture and Sports Indoor Stadium
25 April	All Day	Sanda Weigh-in	Pegasus Watertown Hotel
		Taolu & Sanda Competition	Culture and Sports Indoor Stadium
26 April	All Day	Departure	



III. GENERAL INFORMATION

A. General Contacts

IWUF Secretariat

Email: events@iwuf.org

Telephone: [0086-10-87774492](tel:0086-10-87774492)

Chinese Wushu Association

Email: wushu@wushu.com.cn

Telephone: [0086-10-64912162](tel:0086-10-64912162)

Local Organizing Committee (LOC)

Email: 783006375@qq.com

Telephone: [0086-15061551571;0086-13812587382;](tel:0086-15061551571;0086-13812587382)

JUSTTOOL SCORING CO.LTD.

Tel: [+86-18064684229](tel:+86-18064684229)

MSN: wushu@iusttool.com

Email: wushu@justtool.com

IWUF Online Registration System: <http://iwuf.justtool.com>



III. GENERAL INFORMATION

B. Wuxi City

Wuxi is a city in southern Jiangsu province, eastern China, 135 kilometers (84 mi) by car to the northwest of downtown Shanghai, between Changzhou and Suzhou,[4] and one of the central cities in the Yangtze River Delta. The birthplace of Wu culture. As of the 2020 census, the city had a total population of 7,462,135 inhabitants. Wuxi is a historically and culturally prominent city, and has been a thriving economic center since ancient times as a production as an export hub of rice, silk and textiles. In the last few decades it has emerged as a major producer of electrical motors, software, solar technology and bicycle parts.





III. GENERAL INFORMATION

C. Jiangyin City

Jiangyin is one of the most important transport hubs on the Yangtze River, Jiangyin's name means "River Shade", from its location on the south or shady side of the Yangtze River. It is also one of the most developed counties in China. With 1,595,138 inhabitants as of the 2010 census, the city is now part of Jiangyin-Zhangjiagang-Jingjiang built-up or metropolitan area with 3,526,260 inhabitants





III. GENERAL INFORMATION

D. International Airport

Shanghai Pudong International Airport (IATA: PVG, ICAO: ZSPD) serves both international flights and a smaller number of domestic flights, while the city's other major airport, Shanghai-Hongqiao, mainly serves domestic and regional flights in East Asia. The distance Taoyuan Resort Hotel is 164km. Shanghai Pudong International Airport is one of two international airports serving Shanghai, the municipality in East China, and a major aviation hub of East Asia. In 2022, Shanghai Pudong International Airport registered 14,178,400 passengers.





III. GENERAL INFORMATION

D. International Airport

Wuxi Shuofang Airport (IATA: WUX, ICAO: ZSWX) is an airport serving the cities of Wuxi and Suzhou in southern Jiangsu Province, China. The distance Taoyuan Resort Hotel is 56km.

Wuxi Shuofang Airport is located in Shuofang Subdistrict in Xinwu District, 12 kilometres southeast of Wuxi and 22 km northwest of Suzhou. In 2022, Wuxi Shuofang Airport registered 3,768,868 passengers.





III. GENERAL INFORMATION

E. Weather

Historical average temperatures for Jiangyin in April range from 12°C-23°C.

F. Electricity

The electricity standard in China is 220V (50Hz).

H. Telephones

To call China from abroad, dial +86(country code) followed by the three digital code, followed by the exact phone-number (7 or 8 digital numbers).

IV. DATES

- Competition Dates

April 24 – 25, 2024

- Final Registration Deadline

24:00 (Beijing Time), March 21, 2024



V. VENUE

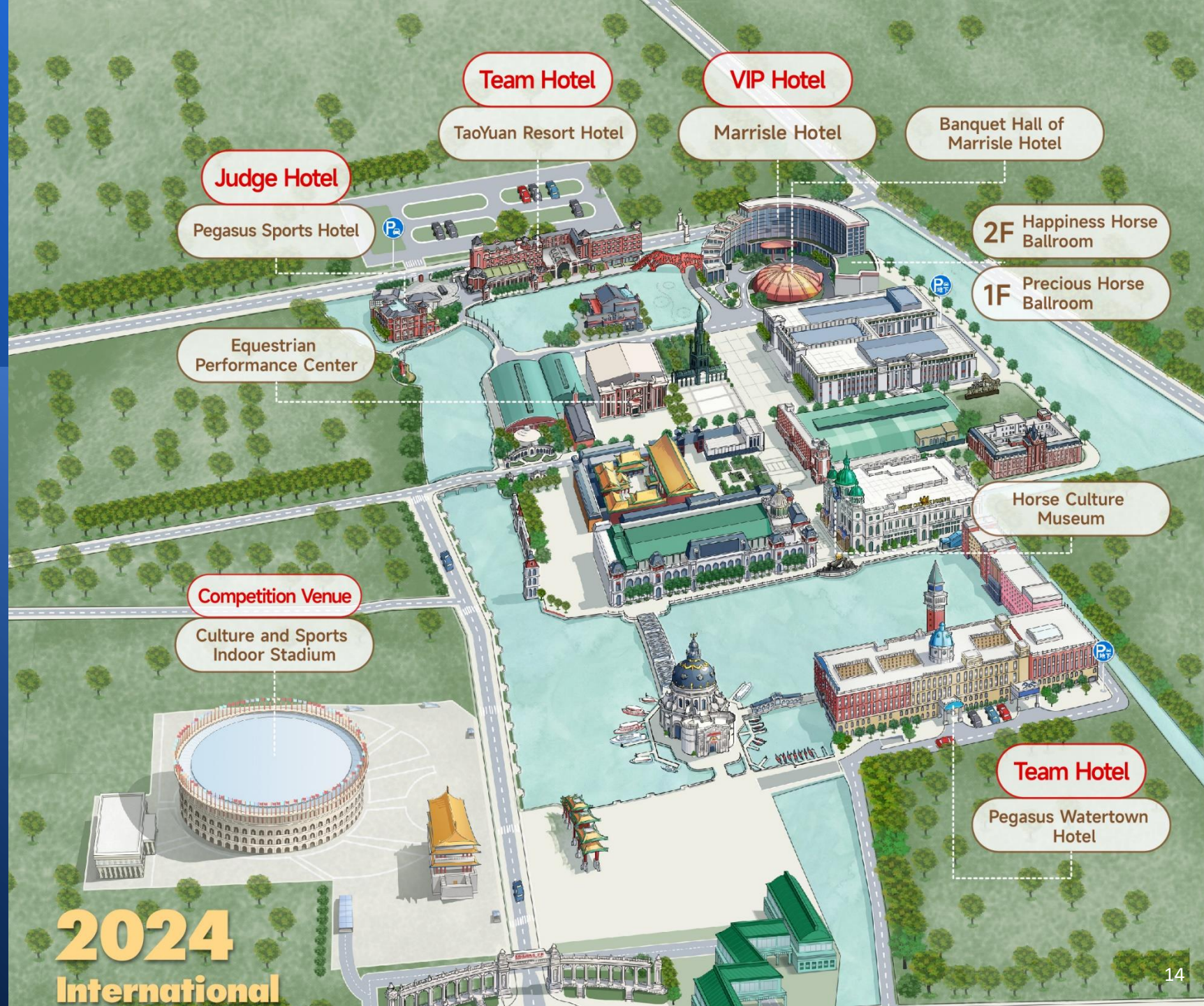
A. Competition Venue

The Culture and Sports Indoor Stadium is designed based on the architecture of the ancient Roman Colosseum in Italy, integrating the functions of modern sports architecture with classical architectural forms. This stadium is used for hosting various competitions, performances, and large-scale events such as national fitness. It was put into use on January 30, 2024.

The Culture and Sports Indoor Stadium is located at No. 1 Minle Road, Xinqiao Town, Jiangyin City, Jiangsu Province, with a total construction area of 118000 square meters and a main competition venue area of over 9000 square meters. It can support four venues for competitions and can accommodate nearly 6000 people to watch the events simultaneously.



V. VENUE



2024
International

—2—

CHAMPIONSHIPS INFORMATION





VI. COMPETITION EVENTS

A. Number of Events

	MEN	WOMEN	TOTAL
Taolu	11	11	22
Sanda	11	7	18
Sub-Total	22	18	40



VI. COMPETITION EVENTS

B. Taolu Events

ROUTINE	BARE-HAND ROUTINES	SHORT WEAPON ROUTINES	LONG WEAPON ROUTINES	CHOREOGRAPHED SPARRING ROUTINE
EVENTS	Changquan	Daoshu	Gunshu	Duilian
	Nanquan	Jianshu	Qiangshu	
	Taijiquan	Nandao	Nangun	
		Taijijian		
PARTICIPATION FORMAT	Individual	Individual	Individual	2-3 persons, men or women (may not be mixed)



VI. COMPETITION EVENTS

C. Sanda Events

MEN'S WEIGHT DIVISIONS	WOMEN'S WEIGHT DIVISIONS
48KG	48KG
52KG	52KG
56KG	56KG
60KG	60KG
65KG	65KG
70KG	70KG
75KG	75KG
80KG	
85KG	
90KG	
OVER 90KG	



VII. QUALIFICATIONS

A. Membership

Only those federations/associations which have paid their IWUF annual membership fees for 2022 and 2023 will be permitted to participate in the International Wushu Invitational Tournament.

New IWUF member federations may be invited to take part in the International Wushu Invitational Tournament after their membership applications have been accepted by the IWUF.

B. Nationality

Athletes must have citizenship of the same nationality as the country/territory which they are representing.

Athletes who have dual citizenship can only represent one (1) country / territory in the championships.

C. Age Requirements

Taolu athletes 12 years old and older, i.e. born before January 1, 2012, may participate.

Sanda athletes between 18-40 years old, i.e. born between January 1, 1984 and December 31, 2006, may participate.



VIII. PARTICIPATION METHODS

A. Team Composition

- Each member federation may send one team, comprising a Taolu team and a Sanda team.
- Each team may include a maximum of 1 Team leader, 1 doctor, 2 Taolu coach (if applicable), 2 Sanda coach (if applicable), 8 Taolu athletes, and 8 Sanda athletes (5 male, 3 female).
- Each Taolu athlete may enter a maximum of 4 events: 1 bare-hand Routine, 1 short-weapon Routine, 1 long-weapon Routine, and 1 Duilian.
- Each Sanda athlete is limited to one weight category, and each team can register 1 athlete per weight category.
- Athletes who participated in the 16th World Wushu Championships cannot change their registered Taolu or Sanda events.



VIII. PARTICIPATION METHODS

B. Taolu Events

ROUTINE	BARE-HAND ROUTINES	SHORT WEAPON ROUTINES	LONG WEAPON ROUTINES	CHOREOGRAPHED SPARRING ROUTINES
EVENTS	Changquan	Daoshu	Gunshu	Duilian
	Nanquan	Jianshu	Qiangshu	
	Taijiquan	Nandao	Nangun	
		Taijijian		
EVENT ENTRY QUOTA FOR EACH ATHLETE	≤1	≤1	≤1	≤1

Each athlete may enter a maximum four (4) of the following taolu events:

- One (1) bare hand routine: Changquan, Taijiquan, Nanquan
- One (1) short weapon routine: Daoshu, Jianshu, Nandao, Taijijian
- One (1) long weapon routine: Gunshu, Qiangshu, Nangun
- One (1) choreographed sparring routine

Each Team may enter at most one (1) Duilian event total.



VIII. PARTICIPATION METHODS

C. Sanda Events

Each Team shall be composed of a maximum of eight (8) sanda athletes, with at most five (5) men and at most three (3) women athletes.

Each Team may enter at most one (1) athlete per weight category, and each athlete may enter only one (1) weight category.

D. Competition Events

Athletes who participated in the 16th World Wushu Championships cannot change their registered Taolu or Sanda events.



IX. COMPETITION RULES

Unless otherwise stated within these regulations, the competition will be conducted in accordance with the:

- IWUF Wushu Taolu Competition Rules & Judging Methods (Excerpt) 2019
- IWUF Wushu Sanda Competition Rules & Judging Methods (2017)

Hereinafter, competition rules for both taolu and sanda disciplines will be referred to simply as the “Rules” and “Methods” in each context.

The Rules and Methods may be interpreted solely at the discretion of the IWUF.

In the event of language discrepancies in the Rules and Methods, the English text shall prevail.



IX. COMPETITION RULES

A. Taolu Competition

i. Optional Routines

The “Events with Degree of Difficulty Scoring Method & Standards” will be implemented.

Within a single routine, an athlete may register and perform a single Degree of Difficulty Jumping Technique at most two (2) times; however, the Degree of Difficulty Connection for these jumps may not be repeated (e.g. within a single optional routine an athlete may register and perform xuanfengjiao 360° (360° Tornado Kick) at most two (2) times, but the Degree of Difficulty Connection for each Tornado Kick must be different).

All athletes are required to execute their optional routine’s relevant compulsory/mandatory techniques, and failure to do so will result in deductions as stipulated in the Rules.



IX. COMPETITION RULES

A. Taolu Competition

ii. Taijiquan and Taijijian

Accompanying music is required for Taijiquan and Taijijian routines and must be uploaded through the online registration system with each Team's final entry submission. Music with vocals and/or lyrics is not permitted.

iii. Duilian Routines

For Duilian (choreographed sparring) routines "Events without Degree of Difficulty Scoring Method & Standards" will be implemented.



IX. COMPETITION RULES

B. Sanda Competition

The competition will utilize the single-knockout method. However, if the number of athletes in a given weight class is three (3), a round-robin competition method will be adopted.

Following arrival and accreditation, sanda athletes will undergo an initial weigh-in and drawing-of-lots as stipulated in the schedule and continue with daily weigh-in on the morning of each day they have a bout per the IWUF Wushu Sanda Competition Rules & Judging Method (2017).



X. UNIFORMS & EQUIPMENT

The following sections list uniform and equipment requirements and procedures for different locations and functions.

A. Competition Requirements

i. Taolu

Each athlete shall wear wushu competition uniforms that conform to the requirements as stipulated in the Rules during all events. All athletes must provide their own uniform(s).

All weaponry must conform to the requirements as stipulated in the Rules. All athletes must provide their own weaponry.

Two (2) competition bibs (20cm*15cm) for each athlete's use will be provided by the Organizing Committee to Teams upon accreditation. All taolu athletes must have their competition bibs attached to the back of their clothing before entering the competition arena.

ii. Sanda

Each athlete must provide two (2) sets of competition uniforms: one (1) blue set and one (1) red set.

Each athlete must provide their own gum guard, groin cups, and hand wraps. Gloves and protective equipment manufactured by IWUF's certified supplier(s) will be provided by the Organizing Committee.



X. UNIFORMS & EQUIPMENT

B. Compliance Requirement of Marketing and Advertising

All Teams must follow the IWUF Brand Control Guidelines for Wushu Competition Uniforms (excerpt) (see Appendix 1).

C. Clothing Requirements for Opening/Closing Ceremonies

All Teams must wear their official national/territorial team uniforms at the Opening and Closing Ceremonies.

D. Clothing Requirements for Awards Ceremony

Medalists are expected to attend the Awards Ceremony in their national/territorial team uniforms; however, they are permitted to attend the ceremony wearing competition uniforms should the ceremony take place immediately after the competition.

Athletes are expected to take off caps/hats during the ceremony.

Athletes and officials are not allowed to take any religious symbols to or onto the podium.



X. UNIFORMS & EQUIPMENT

E. Compliance Check at Roll Call Center

Uniform and weapons checks will be conducted at the Roll Call Center in accordance with stated regulations and requirements. Uniforms and weapons checks are conducted by the Chief Registrar and the Rollcall Officials as stipulated in the Rules. Non-compliance may be subject to disqualification from the competition.

All athletes are required to attend the initial roll call thirty (30) minutes prior to the start of their competition event and be present for all subsequent roll calls. Failure to be present for three (3) roll calls will result in forfeit.



XI. PLACING & AWARDS

A. Placing & Awards

EVENT	PLACEMENT	AWARD
Taolu	1 st Place	Gold Medal & Certificate
	2 nd Place	Silver Medal & Certificate
	3 rd Place	Bronze Medal & Certificate
	4 th - 8 th Place	Certificate
Sanda	1 st Place	Gold Medal & Certificate
	2 nd Place	Silver Medal & Certificate
	3 rd Place (Juxtaposition)	Bronze Medal & Certificate



XI. PLACING & AWARDS

B. Awards Ceremony

Athletes having won a medal are required to attend the Awards Ceremony to receive their medals in person. In case a medalist is unable to attend the ceremony for a valid reason, his/her medal may be presented to an official of the relevant delegation. Absence without a valid reason will forfeit the right to receive a medal.

Team leaders, coaches, doctors, observers, and members must stay at the designated area and are prohibited from entering the awarding platform area and/or interrupting the Awards Ceremony.

If fewer than three (3) athletes participate in a given event, no Awards Ceremony will be held for that event, however, athletes will still be ranked and receive awards accordingly.

Athletes having won a medal are advised to observe and follow the IWUF Awards Ceremony Procedure (Appendix 2).

The awards ceremony will take place during competitions, and the awarding place will be informed in due course.



XI. PLACING & AWARDS

C. Participation Certificates

All members of each Team, including team leaders, coaches, doctors, and athletes will receive the participation certificates of International Wushu Invitational Tournament.

The Team leader is required to collect the participation certificates, as well as certificates of Taolu athletes placing 4th-8th (if applicable), for their Team from the Organizing Committee at the designated Results & Certificate Center.



XII. REGISTRATION

A. Final Entry

All final entries must be submitted through the IWUF Online Registration System www.iwuf.org/registration .

The deadline for final entry submission through the online system is 24:00 (Beijing Time) on **March 21, 2024**. Each Team is required to print a copy of the submitted entry and present it during accreditation upon arrival in Jianyin City.

All sections of the online entry must be completed in full, including registration of athletes' Degree of Difficulty Techniques in the relevant online section.



XII. REGISTRATION

All payments due to the LOC must be paid in full for registration to be considered complete. For information on judge registration, see Section XVII.A.ii.

i. Post-deadline Entries or Changes

After the final entry deadline, any information change (including late entry) will be handled as follows:

- Late entries are subject to the approval of the IWUF and, if accepted, are subject to a late-entry fee of US\$ 100 per athlete.
- Replacing athletes is subject to approval of the IWUF and, if accepted, is subject to a replacement fee of US\$ 100 per athlete.
- Changes due to incorrect or missing registration information are subject to the approval of the IWUF and, if accepted, are subject to a change fee of US\$ 100.
- The above fees must be paid in cash to the IWUF Secretariat before the Opening Ceremony.

LATE ENTRY	REPLACEMENT	INFORMATION CHANGE
US\$ 100	US\$ 100	US\$ 100



XIII. ARRIVAL & ACCREDITATION

A. Arrival

All Teams and judges are register with the International Wushu Invitational Tournament Organizing Committee at the designated Accreditation Center no later than 24:00 on April 22nd, 2024 (Beijing Time).



XIII. ARRIVAL & ACCREDITATION

B. Accreditation

Accreditation Center(s) will open at 9:00 on April 21st, 2024 (Beijing Time). Upon arrival at the Accreditation Center, the Team leader is required to complete the following process with the Organizing Committee:

Accreditation cards will be given to the team leader upon completion of the accreditation process. Accreditation cards must be worn during all official International Wushu Invitational Tournament.

The training schedule will be announced after accreditation has concluded.

1	Present each team member's passport
2	Submit a paper copy of a signed and stamped Final Entry Form and confirm the registration information
3	Submit three (3) national flags (size: 1m*2m)
4	Submit national anthem (short version) in MP3 format on a CD or USB flash drive
5	Submit three (3) color photos (passport size) per team member
6	Submit valid Medical Certificates
7	Submit valid life and liability insurance certificates
8	Submit the signed Waiver of Liabilities
9	Confirm each athlete's Registration Form for Degree of Difficulty Techniques of Optional Routines and sign the form
10	Pay the relevant participation fees in full (if applicable)
11	Pay the relevant penalty fees in full (if applicable)
12	Sign and confirm all the above items are completed



XIV. TECHNICAL MEETING

The Technical Meeting will take place on April 23, 2024. Each team should send 1-3 representatives to attend the meeting.

The Technical Meeting content will be presented as follows:

- Event Logistics Information (Organizing Committee representatives)
- IWUF Event Guidelines (IWUF representatives)
- Event Technical Details (Technical Delegate/ Chief Referee/ Chair of Jury of Appeals)
- Other Matters



XV. DRAWING OF LOTS

The Drawing of Lots will be conducted by the scheduling-recording group supervised by the Jury of appeals and the Chief Referee on April 23, 2024. The Drawing of Lots for taolu and sanda disciplines will be held simultaneously in two separate rooms. Each Team should send one to two (1-2) representatives for each discipline to attend the sessions.

The Jury of appeals will draw lots on behalf of Teams if the Team representatives are absent from the session.



XVI. WEIGH-IN

The first official weigh-in for all sanda athletes will take place at 07:00 on April 23, 2024.

Afterwards, sanda athletes must attend a weigh-in on each day they participate in competition (specific time and places for each weigh-in will be announced accordingly). Accreditation cards and passports must be presented at each weigh-in session. A sanda athlete's failure to attend any required weigh-in will result in his/her disqualification from the competition.



XVII. TECHNICAL OFFICIALS

A. Judges (Referees)

i. Independent judges

The IWUF will appoint independent judges at its discretion to serve at this tournament.

Judges must have participated in one of the 2023 IWUF International Judges Training and Certification Courses and passed the respective examination in order to qualify to judge at this tournament.

All International Judges must input their valid IWUF certificate numbers through the online registration system when registering and present their original certificates to the IWUF Judges' Committee upon arrival and registration in Jiangyin.



XVII. TECHNICAL OFFICIALS

ii. Judges' Refresher Course

All judges are required to participate in the Judges' Refresher Course. The purpose of this course is to ensure that judges have a solid understanding and grasp of competition rules, and to enhance transparency, objectivity and quality in judging.

iii. Judges' Uniform Requirements

The Organizing Committee will provide judges with ties for men and scarves for women during the competition. All judges shall prepare their own black jackets, white dress shirts, black slacks, and black leather shoes.

B. Jury of appeals and appeals procedures

The Jury of Appeals and appeals procedures shall be subject to the relevant provisions of IWUF Wushu Taolu Competition Rules & Judging Methods (Excerpt) 2019 and IWUF Wushu Sanda Competition Rules & Judging Methods (2017).



XVIII. SUPERVISORY COMMISSION

A Supervisory Commission shall be established by the IWUF, with the purpose of and the right to resolve any disputes or investigate any issues that arise during the course of this competition to ensure the smooth execution of the event.

The Supervisory Commission for an IWUF competition consists of three to five (3-5) members appointed by the President of the IWUF and is responsible for overseeing tournament management and dispute mediation for the entire duration of this tournament and not beyond. Specific descriptions of responsibilities include:

- The Commission will ensure that competitions adhere to principles of fair play, impartiality, and transparency.
- The Commission represents the IWUF in handling disputes regarding the competitions that arise between NFs and/or teams and/or the LOC and has the right to resolve such disputes. However, the Commission does not directly interfere with the competition proceedings or disputes arise within the competition, which are responsibility of Jury of Appeals and relevant judging panel.
- The Commission represents the IWUF in coordinating between NFs and/or teams and/or the LOC.
- The Commission shall report any irregularities or violations observed during the competitions to the IWUF President and the IWUF Executive Board.
- The Commission shall monitor and demand that NFs take responsibility for their athletes' general attitude and comportment.

—3—

TEAM INFORMATION





XIX. ACCOMMODATION

A. Accommodation Reservation

All Teams are required to lodge at the designated hotels as arranged by the Organizing Committee.

The international airfare and related travel expenses, as well as accommodation/participation fees of all participants shall be borne by the teams themselves. The participation fees include meals, accommodation, event participation and pick-up/drop-off to and from the designated airport. The participating teams shall pay their participation fees in full to the organizing committee by international wire transfer with the submission of their final entries. Teams who would like to arrive earlier or depart later than the required dates should provide the dates for the intended duration of stay during the final registration process.

Hotel reservations are available on a first come first serve basis, we advise teams to make your reservations early.



XVIII. ACCOMMODATION

Team Hotels

Jiangyin Pegasus Watertown Hotel

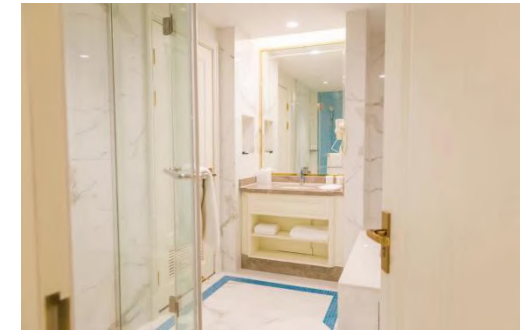
3 star

Address: No.888, Nanhuan Road, Jiangyin City, Jiangsu Province, China

Telephone : +86510-81699000

Distance to Culture and Sports Indoor Stadium is 5 minutes by walking

Jiangyin Pegasus Watertown Hotel is located in the scenic area of Heilan Pegasus Watertown in Jiangyin City, with elegant environment and complete facilities. It is a theme resort based on horse elements and integrates dining, guest rooms, entertainment and leisure shopping. The hotel has 249 rooms, next to Marrisle hotel and Taoyuan Resort, the mid-range and high-end are available.



Per Person Per Night	Single Room Only one person allowed	Double Room Two Person allowed
Teams (athletes, coaches & team officials)	130USD	110USD



XVIII. ACCOMMODATION

Team Hotels

Taoyuan Resort Hotel (Main Building)

5 star

Address: No.888, Nanhuan Road, Jiangyin City, Jiangsu Province, China

Telephone : +86510-81699000

Distance to Culture and Sports Indoor Stadium is 5 minutes by walking.

Taoyuan Resort Hotel is located at No.888,Nanhuan Road, Jiangyin City, which is a leisure resort, integrating guest rooms, dining and conferences. Various dishes here are based on the theme of nutrition and health, which can meet the different needs of guests. The hotel has world-class conference facilities, which can meet the needs of a variety of high-level conferences. The hotel is also equipped with chess and card rooms, a swimming pool, a gymnasium, pedicure clubs, hairdressing center, business center and other functional facilities.



Per Person Per Night	Single Room Only one person allowed	Double Room Two Person allowed
Teams (athletes, coaches & team officials)	155USD	135USD



XVIII. ACCOMMODATION

Judge Hotel

Pegasus Sports Hotel

5 star

Address: No.888, Nanhuan Road, Jiangyin City, Jiangsu Province, China

Telephone : +86510-81699000

Distance to Culture and Sports Indoor Stadium is 5 minutes by walking.

The hotel has world-class conference facilities, which can meet the needs of a variety of high-level conferences. The hotel is also equipped with chess and card rooms, a swimming pool, a gymnasium, pedicure clubs, hairdressing center, business center and other functional facilities.





XVIII. ACCOMMODATION

VIPs Hotel

Jiangyin Marrisle Hotel

5 star

Address: No.888, Nanhuan Road, Jiangyin City, Jiangsu Province, China

Telephone : +86510-81699000

Distance to Culture and Sports Indoor Stadium is 5 minutes by walking.

Jiangyin Marrisle Hotel is located in the tourism scenic area of Pegasus Watertown in Jiangyin city. The hotel has an elegant environment and complete facilities. It is an artistic cultural theme resort hotel with a main theme of horse elements, including catering, rooms, entertainment, and leisure. There are more than 200 delicate rooms, 16 special catering halls, and 4 banquet halls. The hotel also has lobby bar, swimming pool, SPA room, fitness room, beauty salon, and executive lounge. The Hotel interprets the traditional classic in modern architectural form, with the round banquet hall and curved hotel building complementing each other, like two pearls reflecting in the surrounding lake and canal, creating a magnificent scenery.





XX. TRANSPORTATION

Transportation for arrival and departure at Shanghai Pudong International Airport and Wuxi Shuofang Airport will be arranged for all Teams on April 21-22 and April 26, 2024, respectively. Teams will have shuttle bus arranged.

Local transportation between official hotels and venue (if required) will be provided by shuttle buses. A detailed transportation schedule will be provided upon arrival.



XXI. FINANCIAL CONDITIONS

A. Participation fees: Rates and Services Provided

Participation fees cover all registration and accreditation-related expenses, accommodation, 3 meals per day, and local transportation (airport pick-up drop-off and transportation between hotel and venue if needed). All teams shall pay their participation fees in full to the Organizing Committee by the final registration deadline.



XXI. FINANCIAL CONDITIONS

B. Payment Methods

All Teams are required to complete full payment in advance to the Organizing Committee by 24:00 (Beijing Time) March 21, 2024 through international remittance.

Teams that are unable to pay through international remittance due to government policies and restrictions should communicate with the Organizing Committee in advance to make arrangements; otherwise, accreditation will not be issued.

Until complete payment is received, hotel rooms will not be reserved and accreditation will not be issued.



XXI. FINANCIAL CONDITIONS

C. Bank Information of Organizing Committee:

Name of beneficiary: Jiangyin Shengshi Sports Events Co. Ltd

Address of beneficiary: Lijiatang A-001 Weili village, Xinqiao Town, Jiangyin city, Wuxi City, Jiangsu, P.R. China,
214426

Beneficiary's Bank Name: Bank of China Jiangyin Branch

Account Number of beneficiary (IBAN): 496280307191

Beneficiary's Bank Address: No.1 Middle Renmin Road, Jiangyin City, Jiangsu, P.R.China

SWIFT Code: BKCHCNBJ95C



XXII. PASSPORTS & VISA REQUIREMENTS

All participants must hold a valid passport and should allow plenty of time for visa application and processing. To ensure as few complications during visa application and travel as possible, it is suggested that all participants' passports are valid for at least 2 months following their final day of travel.

Teams that require visa invitation letters should state their requests in the Entry Form by 24:00 (Beijing Time) March 21, 2024. If you need any assistance on visa issues, please contact LOC.

NOTE: We strongly recommend teams that need to apply for visas do so immediately.



XXIII. DOPING CONTROL

Doping control will be conducted during this tournament in accordance with the requirements of the International Olympic Committee (IOC) and World Anti-Doping Agency (WADA), and will follow the procedure prescribed in the latest IWUF Anti-Doping Rules. The HOST shall contract with NADOs to execute testing activities on request by ITA.



XXIV. RESPONSIBILITY OF MEMBER FEDERATIONS

NFs are responsible for their officials, coaches, athletes, and observers adhering to the IWUF and this tournament principles and to all relevant rules established by the IWUF and the Organizing Committee. NFs should ensure that their participants hold themselves to the highest standards in all their actions during the event.

A. Fundamental Principles

All NFs' Team members participating in this tournament must observe and respect the IWUF constitution, rules, regulations, and representatives. Individuals deemed to have acted against the IWUF, its principles, interests or purpose may be subject to suspension or expulsion from the event and/or cancellation of their accreditation.

B. Attitude of Athletes and Coaches

The athletes will compete under the responsibility of their NFs. NFs are fully responsible regarding the general attitude and comportment of their athletes. Coaches should respect the judging panel and all complaints must be conducted in accordance with competition procedures. Athletes and Coaches should comply with the IWUF Ethic Codes.

C. Image of Athletes

Each NF is responsible for obtaining the rights for the IWUF to use its athletes' images at the discretion of the IWUF for promotional purposes in all forms.

D. Insurance

Each NF is fully and sole responsible for insuring its athletes against injury and third-party risk (public liability) during the period of this tournament. The IWUF and the Organizing Committee are not responsible in part or in whole of the said liability.



XXV. APPENDIX

1. IWUF Brand Control Guidelines for Wushu Competition Uniforms (excerpt)
2. IWUF Awards Ceremony Procedure
3. Medical Certificate (Sample)
4. Waiver of Liability

The above documents will be attached with regulations in form of sperate files, which can be downloaded in the IWUF official Website.

—4—

Additional World Cup Qualified Quotas





XXVI. Generation of Additional World Cup Qualified Quotas

1. Athletes who ranked in the top eight in Taolu events have qualified for the 3rd Taolu World Cup, and the top three (including juxtaposition) in each Sanda weight category at the 16th World Wushu Championships have qualified for the 10th Sanda World Cup.
2. This supplementary qualification event will generate one additional quota for the 3rd Taolu World Cup and two additional quotas for the 10th Sanda World Cup for each Taolu event and Sanda weight category, respectively.
3. Additional quotas are restricted to athletes who (1) participated in the 16th World Wushu Championships; or (2) are affiliated with member federations that did not participate in the 16th World Wushu Championships.
4. Each member federation can have a maximum of 8 athletes for Taolu, and 5 male athletes and 3 female athletes for Sanda, when attending the World Cups 2024.
5. Athletes already qualified for the 3rd Taolu World Cup / 10th Sanda World Cup are not eligible for additional qualification rankings in their qualified events.
6. The top-ranked athlete in each Taolu event of the tournament will secure participation quotas in the 3rd Taolu World Cup 2024.
7. The top two athletes in each Sanda weight category of the tournament will secure participation quotas in the 10th Sanda World Cup 2024.



XXVI. Generation of Additional World Cup Qualified Quotas

Notes:

Athletes and accompanying team officials who obtain qualification through the supplementary qualification event are responsible for their accommodations, meals and transportation when participating in the 3rd Taolu World Cup and the 10th Sanda World Cup.



INTERNATIONAL WUSHU FEDERATION

SEE YOU IN JIANGYIN 2024

恒源祥®

IWUF Global Partner

ANTA

IWUF Global Sponsor

TaiShan 泰山

IWUF Global Supplier

WESING 九日山

IWUF Global Supplier