



**IWUF  
WUSHU TAOLU COACHES  
TRAINING COURSE 2025**

---

**REGULATIONS**

📅 **April 7-13, 2025**

📍 **Jiangyin, China**

International Federation  
recognised by the



International  
Olympic  
Committee

**Version 2, issued on January 15, 2025 by IWUF**

© International Wushu Federation

Lausanne Office: Avenue de Rhodanie 58, 1007 Lausanne, Switzerland

Beijing Office: 9 Huaweili, Chaoyang District, 100021 Beijing, China

[www.iwuf.org](http://www.iwuf.org)



# CONTENTS

## I. GENERAL INFORMATION

<b>1. INTRODUCTION</b> .....	1
<b>2. DATES</b> .....	1
1.1. Course Date .....	1
1.2. Important Dates .....	1
<b>3. PLACE</b> .....	1
<b>4. GENERAL PROGRAM</b> .....	2
<b>5. KEY CONTACTS</b> .....	3

## II. TECHNICAL INFORMATION

<b>6. QUALIFICATIONS</b> .....	4
6.1 Membership .....	4
6.2 Quota .....	4
6.3 Eligibility for Participants .....	4
<b>7. ENTRIES</b> .....	4
7.1 Final Entry .....	4
7.2 Late Entry Policy .....	5
<b>8. ARRIVALS &amp; REGISTRATION</b> .....	5
8.1 Arrivals .....	5
8.2 Accreditation .....	5
<b>9. COSTUME REQUIREMENTS</b> .....	6
<b>10. PARTICIPATION CERTIFICATES</b> .....	6

## III. PARTICIPANT INFORMATION

<b>11. ACCOMMODATION &amp; MEALS</b> .....	7
11.1 Accommodation Reservation .....	7
11.2 Room Reservation Policy .....	7
11.3 Hotels Information .....	7
<b>12. TRANSPORTATION</b> .....	8
12.1 Transport Services for Arrivals & Departures .....	9
12.2 Local Transport Services .....	9



<b>13. FINANCIAL CONDITIONS</b> .....	9
<b>14. RESPONSIBILITY OF MEMBER FEDERATIONS</b> .....	10
<b>15. PASSPORT &amp; VISA REQUIREMENTS</b> .....	10
<b>16. MISCELLANEOUS</b> .....	11
<b>17. ANNEX</b> .....	11
Annex 1: Wavier of Liabilities .....	12
Annex 2: Medical Certificate (Sample).....	14



## I. GENERAL INFORMATION

### 1. INTRODUCTION

Approved by the IOC, wushu is officially included in the sport program of 4th Youth Olympics Games (YOG) in Dakar, Senegal in 2026. In an aim to improve the coaches' teaching techniques in enhancing their athletes' performance during the YOG, with the support of the Chinese Wushu Association, the International Wushu Federation (IWUF) organizes this taolu coaches training course in 2025 by highlighting the teaching & training of the YOG wushu taolu competition routines, namely the 3<sup>rd</sup> set of International Wushu Competition Routines - Changquan, Gunshu, Taijiquan and Taijishan routines.

For more information on the IWUF Wushu Taolu Coaches Training Course 2025, please visit the IWUF official website <http://www.iwuf.org/>, also visit the official social media, Facebook, Instagram (IG), YouTube.

### 2. DATES

#### 1.1. Course Date

April 7 - 13, 2025.

#### 1.2. Important Dates

##### - Online Final Entry

Open: January 15, 2025.

Deadline: 24:00 (Beijing Time) on February 28, 2025.

##### - Late Entry (Upon Approval by IWUF)

Duration: February 29, 2025 - 24:00 (Beijing Time) on March 28, 2025.

#### 1.3. Course Place

Pegasus Watertown, Jiangyin City, China.



### 3. GENERAL PROGRAM

Date	Time	Activity	Location
April 7 (MON)	All Day	Arrivals	Hotels
April 8 (TUE)	09:00 - 11:30	Opening Ceremony <b>Technical training:</b> Changquan routine	TBD
	14:30 - 17:00	<b>Technical training:</b> Changquan routine - Common errors & correction methods - Difficult points analysis of Changquan routine	
	19:00 - 20:30	Self-study	
April 9 (WED)	09:00 - 11:30	<b>Technical training:</b> Gunshu routine	TBD
	14:30 - 17:00	<b>Technical training:</b> Gunshu routine - Common errors & correction methods - Difficult points analysis of Gunshu routine	
	19:00 - 20:30	<b>Lecture:</b> Judging Methods for the Quality of Movements & Overall Performance of Changquan & Gunshu	Hall Baoma / or Hall Fuma
April 10 (THUR)	09:00 - 11:30	<b>Technical training:</b> Taijiquan routine	TBD
	14:30 - 17:00	<b>Technical training:</b> Taijiquan routine - Common errors & correction methods - Difficult points analysis of Taijiquan routine	
	19:00 - 20:30	Self-study	
April 11 (FRI)	09:00 - 11:30	<b>Technical training:</b> Taijishan routine	TBD
	14:30 - 17:00	<b>Technical training:</b> Taijishan routine - Common errors & correction methods - Difficult points analysis of Taijishan routine	
	19:00 - 20:30	<b>Lecture:</b> Judging Methods for the Quality of Movements & Overall Performance of Taijiquan & Taijishan	Hall Baoma / or Hall Fuma
April 12 (SAT)	09:00 - 11:30	<b>Lecture:</b> Key points of the IWUF Wushu Taolu Competition Rules and Judging Methods (2024)	Hall Baoma / or Hall Fuma
	14:30 - 17:00	<b>Lecture:</b> Key points of the IWUF Wushu Taolu Competition Rules and Judging Methods (2024)	
	18:00 - 19:00	Closing Ceremony	
April 13 (SUN)	Before 14:00	Departures	Hotels

Note: 1. This program is subject to change.



2. Changquan, Gunshu, Taijiquan and Taijishan Routines are the IWUF 3<sup>rd</sup> Set of International Wushu Competition Routines.

#### 4. KEY CONTACTS

- **IWUF Secretariat**

Tel: +86-10-87774492

Email: [events@iwuf.org](mailto:events@iwuf.org)

- **Chinese Wushu Association (CWA)**

Tel: +86-10-64912162

Email: [wushu@wushu.com.cn](mailto:wushu@wushu.com.cn)

- **Local Organizing Committee of IWUF Wushu Taolu Judges Training Course 2025 (LOC)**

Local Organizer: Jiangyin Shengshi Sports Events Co. Ltd

Tel: +86-18380436849

Email: [biyuezhuo@outlook.com](mailto:biyuezhuo@outlook.com)



## II. TECHNICAL INFORMATION

### 5. QUALIFICATIONS

#### 5.1. Membership

Only those member federations/associations which have paid their IWUF annual membership fees for 2024 will be permitted to participate in the course.

The federation/association applying to join IWUF may be invited to take part in the course after their applications have been accepted by the IWUF.

#### 5.2. Quota

Each IWUF Member federation/association (hereinafter referred to as "NF") may at most submit 2 taolu coaches to participate in the course.

#### 5.3. Eligibility for Participants

Only those participants registered by their NFs will be accepted to participate in the course.

All participants should be in good physical health.

### 6. ENTRIES

#### 6.1. Final Entry

All final entries must be submitted through the IWUF Online Registration System.

##### - **IWUF Online Registration System**

URL: <https://registration.iwuf.org>

Contact person: HUANG Xilong

Tel: +86-18151508770

Email: [Service@jyywty.com](mailto:Service@jyywty.com)

Tech-support: Jiangyin Yunwu Shiwu Sports Technology Co., Ltd

All sections of the online entry must be completed in full, including the uploading of the following documents:

- Photos of the participants (White background. Head filling 70-80% of the photo. At least 480 pixels (width) \* 600 pixels (height))





- Passports of the participants (at least six months following their final day of travel).
- Valid IWUF International Judges Certificates of the participants.

Each NF is required to print a copy of the submitted entry and present it upon arrival and registration in Jiangyin.

Final entry will be opened on **January 15, 2025**, and the deadline for the final entry to be completed through the online registration system is 24:00 (Beijing Time) on **February 28, 2025**.

## 6.2. Late Entry Policy

The deadline for the late entries and changes is due on **March 28, 2025**, 24:00 (Beijing Time).

The late entries are subject to the approval of the IWUF and, if accepted, are subject to a late-entry fee of **US\$ 100** per person.

The above fees must be paid via wire transfer to the IWUF before **March 28, 2025**, 24:00 (Beijing Time).

Beneficiary Name/ Bank account name	International Wushu Federation
Beneficiary Address	Avenue de Rhodanie 58, 1007 Lausanne, Switzerland
Bank Name	UBS AG
Bank address	Place St-François 16, Case postale, CH-1002 Lausanne, Switzerland
Bank account number	0243-166188.61X
Bank clearing	0243
SWIFT code	UBSWCHZH80A
IBAN	CH680024324316618861X
Company taxpayer identification number	CH TVA No. CHE-436.351.545
Country	Switzerland

## 7. ARRIVALS & ACCREDITATION

### 7.1. Arrivals

All participants are required to register with the LOC at the designated Accreditation Center no later than 24:00 (Beijing Time) on **April 7, 2025**.

### 7.2. Accreditation



Accreditation Center will open at 09:00 (Beijing Time) on **April 7, 2025**.

Upon arrival, each participant is required to complete the following process with the LOC:

1	Present each participants' passport
2	Submit a paper copy of their Final Entry Form with signature and stamp
3	Submit the signed Wavier of Liabilities of all participants (Annex 1)
4	Submit Medical Certificates (Sample) of all participants (Annex 2)
5	Confirm to pay the relevant participation fees in full (if applicable)
6	Confirm to pay the relevant penalty fees in full (if applicable)
7	Submit a bank receipt of payment (either in paper or electronic documents)
8	Sign and confirm all the above items are completed

Accreditation cards will be given to participants upon completion of the accreditation process. All personnel must participate in the official activities with their accreditation card during the IWUF Wushu Taolu Coaches Training Course 2025.

## 8. COSTUME REQUIREMENTS

All participants should wear flexible wushu clothes and shoes on the training days.

Participants who wear tight uniforms that are not suitable for training or shoes with hard or sharp edges may be refused to attend the training sessions.

## 9. PARTICIPATION CERTIFICATES

All participants will receive a participation certificate for the IWUF Wushu Taolu Coaches Training Course 2025.



### III. PARTICIPANT INFORMATION

#### 10. ACCOMMODATION & MEALS

##### 10.1. Accommodation Reservation

All participants are required to lodge at the designated hotels as arranged by the LOC.

The LOC will provide accommodation and meals for all participants **from the evening on April 7, 2025, until the midday on April 13, 2025**. Participants who would like to arrive earlier or depart later than the required dates should provide the dates for the intended duration of stay during the final registration process, and must ensure to book accommodations accordingly, with daily rates applying for extended stays and taking the hotel check-in time of 15:00 into consideration.

Hotel reservations are available on a first come first serve basis, we advise the NFs to make your reservations early.

NFs unable to stay in the designated hotels due to special reasons shall pay a participation fee of **US\$ 200** per person. In this case, it shall be responsibility of the NFs for their accommodation, meals, transportation as well as consequences arising at a result of this.

##### 10.2. Room Reservation Policy

NFs with odd number of participants when having reserved double rooms, the extra single delegate will be allocated by the LOC in the double room with other NF's member, if the individual chooses not to pay for the price of a single room.

The LOC will allocate the hotels for the NFs based on the final entry form they submitted.

##### 10.3. Hotels Information

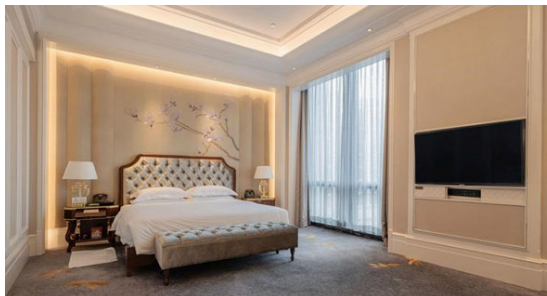
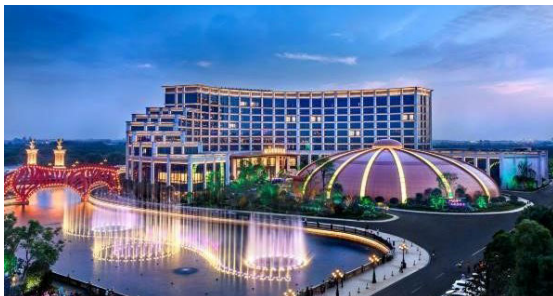
###### - **Marrisle Hotel (5 star)**

**Address:** No.888, Nanhuan Road, Jiangyin City, Jiangsu Province, China

**Telephone:** +86-510-81699000

Jiangyin Marrisle Hotel is located in the tourism scenic area of Pegasus Watertown in Jiangyin city. The hotel has an elegant environment and complete facilities. It is an artistic cultural theme resort hotel with a main theme of horse elements, including catering, rooms, entertainment, and leisure. There are more than 200 delicate rooms, 16 special catering halls, and 4 banquet halls. The hotel also has lobby bar, swimming pool, SPA room, fitness room, beauty salon, and executive lounge. The Hotel interprets

the traditional classic in modern architectural form, with the round banquet hall and curved hotel building complementing each other, like two pearls reflecting in the surrounding lake and canal, creating a magnificent scenery.



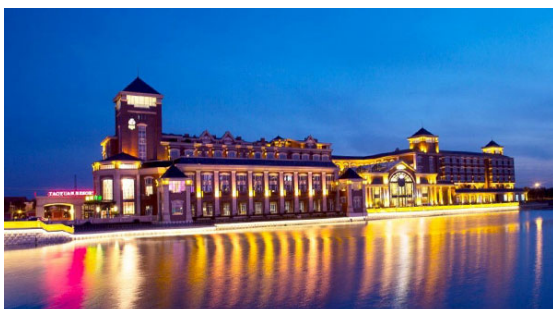
Accommodation Fee	Double occupancy room	US\$150 (per person per day)
	Single occupancy room	US\$180 (per person per day)

**- Taoyuan Resort Hotel (5 star)**

**Address:** No.888, Nanhuan Road, Jiangyin City, Jiangsu Province, China

**Telephone:** +86-510-81699000

Taoyuan Resort Hotel is located in the tourism scenic area of Pegasus Watertown in Jiangyin city, which is a leisure resort, integrating guest rooms, dining and conferences. Various dishes here are based on the theme of nutrition and health, which can meet the different needs of guests. The hotel has world-class conference facilities, which can meet the needs of a variety of high-level conferences. The hotel is also equipped with chess and card rooms, a swimming pool, a gymnasium, pedicure clubs, hairdressing center, business center and other functional facilities.



Accommodation Fee	Double occupancy room	US\$135 (per person per day)
	Single occupancy room	US\$155 (per person per day)

**11. TRANSPORTATION**

### 11.1. Transport Services for Arrivals & Departures

The LOC will provide all participants with the transport services between the designated airports/railway station and the official hotels on the day of arrivals and departures.

### 11.2. Local Transport Services

The local transport services between the official hotels and the training arena (if required) will be provided by shuttle buses. A detailed transport schedule will be provided upon arrival.

Airport/Railway Station	Code	Website
Shanghai Pudong Airport	IATA: PVG, ICAO: ZSPD	<a href="https://www.shanghaiairport.com/">https://www.shanghaiairport.com/</a>
Wuxi Shuofang Airport	IATA: WUX, ICAO: ZSWX	<a href="https://www.wuxiairport.com/">https://www.wuxiairport.com/</a>
Wuxi East Railway Station		
Zhangjiagang Railway Station		

## 12. FINANCIAL CONDITIONS

Any international or domestic airfare and related travel expenses, as well as the participation fees of all participants shall be borne by themselves. The participation fees include accommodation, meals, airport pickup and drop-off, local transportation, entry (excluding the late entry fees) and certificate, etc.

Participants are required to pay the relevant accommodation fees by international bank transfer with their final entry submission. Proof of payment should be sent to the LOC by email and brought along by the participants to the LOC on arrivals.

All participants are required to complete payment in advance to the LOC by 24:00 (Beijing Time) of the **February 28, 2025**.

Bank Name	Bank of China Jiangyin Branch
Account Name	Jiangyin Shengshi Sports Events Co. Ltd
Account Number (IBAN)	496280307191
Swift Code	BKCHCNBJ95C
Beneficiary Account Holder Address	Lijiatang A-001 Weili village, Xinqiao Town, Jiangyin City, Wuxi City, Jiangsu, P.R. China, 214426
Bank Address:	No.1 Middle Renmin Road, Jiangyin City, Jiangsu, P.R. China
<b>Note:</b> Any service charges incurred for international wire transfers shall be borne by participants themselves.	



### 13. RESPONSIBILITY OF MEMBER FEDERATIONS

National/Territorial Federations (NFs) are responsible for their participants adhering to the IWUF and to all relevant rules established by the IWUF and the Organizing Committee. NFs should ensure that their participants hold themselves to the highest standards in all their actions during the event.

#### - **Fundamental Principles**

All NFs' Team members participating in this event must observe and respect the IWUF constitution, rules, regulations, and representatives. Individuals deemed to have acted against the IWUF, its principles, interests or purpose may be subject to suspension or expulsion from the event and/or cancellation of their accreditation.

#### - **Attitude of Participants**

The participants will attend this event under the responsibility of their NFs. The NFs are fully responsible regarding the general attitude and comportment of their participants. All participants should respect the lecturer panel and comply with the IWUF Ethic Codes. All participants should behave themselves well and disciplined during the whole training period.

#### - **Image of Participants**

Each NF is responsible for obtaining the rights for the IWUF to use its participants' images at the discretion of the IWUF for promotional purposes in all forms.

#### - **Insurance**

The participants are fully and sole responsible for insuring themselves against injury and third-party risk (public liability) during the period of this event. The IWUF and the Organizing Committee are not responsible in part or in whole of the said liability.

### 14. PASSPORT & VISA REQUIREMENTS

All participants must hold a valid passport and should allow plenty of time for visa application and processing. To ensure as few complications during visa application and travel as possible, it is suggested that all participants' passports are valid for at least six months following their final day of travel.

Participants who require visa invitation letters should sent their requests to the IWUF and the Chinese Wushu Association via [events@iwuf.org](mailto:events@iwuf.org) and [wushu@wushu.com.cn](mailto:wushu@wushu.com.cn) before **February 28, 2025**.

**NOTE: We strongly recommend the NFs that need to apply for visas do so immediately.**



## 15. MISCELLANEOUS

Any absence from a training session without a valid reason will result in forfeiting eligibility to obtain the participation certificate.

Further information will be circulated in due course.

## 16. ANNEX

Annex 1: Wavier of Liabilities

Annex 2: Medical Certificate (Sample)



Annex 1

**International Wushu Federation (IWUF)  
 Wavier of Liabilities**

Federation				Color ID Photo
Name of Participant				
Date of Birth		Gender		
Nationality		Passport No.		
Role of Participant	Student			

I, the undersigned, knowingly and without duress, do voluntarily submit my Entry to the IWUF Wushu Taolu Coaches Training Course 2025. The IWUF Wushu Taolu Coaches Training Course 2025 is hosted by the International Wushu Federation (IWUF) and organized by the Chinese Wushu Association and Jiangyin Shengshi Sports Events Co. Ltd, hereinafter the Chinese Wushu Association and Jiangyin Shengshi Sports Events Co. Ltd are referred as "Organizing Committee". I understand and acknowledge that the participation in the IWUF Wushu Taolu Coaches Training Course 2025 involves inherent risk of losses, damages or injuries, including but not limited to risks deriving from participating in the lectures and trainings, in the use of the sporting facilities or equipment and/or risks arising from actions or omissions of other participants or other third parties. I further understand that my participation in the IWUF Wushu Taolu Coaches Training Course 2025 is subject to my agreement and acceptance of this Waiver of Liabilities ("Waiver"). In consideration of the IWUF and the Organizing Committee accepting my application, I hereby assume all risk of physical and mental injuries, disabilities and losses which may result from or in connection with my participation in the IWUF Wushu Taolu Coaches Training Course 2025. Acting for myself, heirs, personal officers, agents, representatives and assignees, I do hereby release, to the extent permissible, the IWUF and the Organizing Committee including all associates, auxiliaries and affiliates, such as but not limited to their officers, agents, employees, representatives, volunteers, judges and referees and other related members from all claims, actions, suits, and controversies related to any loss, damage or injury by reason of any matter, cause or thing whatsoever that I may sustain as a result of or in connection with my participation in the IWUF Wushu Taolu Coaches Training Course 2025. I fully understand and acknowledge that it is my sole responsibility to determine whether I am fit and healthy enough to participate in any events without posing a risk to myself or others. I hereby certify that, to the best of my knowledge, this is the case. I understand to have a duty to inspect the state of the used sporting facilities and equipment, and I waive any claim arising out of any respective defect. I fully understand that all medical attention or treatment afforded to me by the IWUF and the Organizing Committee including all associates, auxiliaries and affiliates, e.g. their officers, medical personnel, representatives, employees, volunteers, and all other related members, will be of the first aid type only, and I hereby consent to receiving such treatment and release the IWUF and the Organizing Committee as well as their officers, representatives, volunteers, employees and all other related members from any liability for such aid. I understand it is my personal obligation to obtain my own medical coverage. I am fully and solely responsible for adequately insuring myself against injury and third-party risk (public liability), with such insurance to cover the period before, during and after the event. The IWUF and the Organizing Committee including all associates are not responsible





in part or in whole for any damages or medical or hospital expenses incurred as a result of participation in the IWUF Wushu Taolu Coaches Training Course 2025.

I agree to abide by and follow the Rules established by the IWUF and the Organizing Committee and follow all received instructions. I acknowledge and agree that it is my personal responsibility to be informed about all aforementioned rules and instructions. I agree that I will conduct myself in a professional and courteous manner at all times and to be subject to penalties and sanctions for violations related thereto, pursuant to the IWUF Constitution and the IWUF Ethics Code as updated from time to time and other Rules established by the IWUF and the Organizing Committee. I understand that any dispute must be resolved in accordance with the IWUF Constitution and any further applicable IWUF Rules. I agree that my performance, attendance, and participation at the IWUF Wushu Taolu Coaches Training Course 2025 may be photographed, filmed or otherwise recorded or released or telecast live. I consent to allow the IWUF and the Organizing Committee use of my name, likeness, address, voices, poses, pictures, videos, live or non-live coverage and biographical and biological data concerning full or parts, in any form or language ("Identity, Voice and Image Data"), with or without other material, throughout the world, without limitation, for television, radio, video, theatrical medium picture, or any other medium and any other purpose by the IWUF or the Organizing Committee through any devices now known or hereafter devised and I do hereby waive any compensation in regard thereof as well as any future rights to the aforementioned. I also consent to the collecting, processing and use of all above-mentioned Identity, Voice and Image Data by the IWUF and the Organizing Committee for commercial and promotional services of sponsors and media partners as well as, where necessary, by third parties for the purpose of facilitating my participation an accreditation in the event (e.g. law enforcement authorities, border services agencies etc.).

Furthermore, while I note that the IWUF and the Organizing Committee will take into consideration my needs to rest, train and prepare for the events, I agree to be reasonably available during the Events for TV/digital/radio interviews, promotional or press photo sessions and press conferences at the dedicated areas.

If any provision of this Waiver is deemed to be invalid or unenforceable, the remaining provisions shall remain in full force and effect. This Waiver shall be governed by the IWUF Constitution, the further applicable Rules established by the IWUF and the Organizing Committee and, subsidiarily, by Swiss law.

I have read and fully understand the waiver listed above.

**\*\*For athletes under the age of 18 -This waiver must be signed by their parent or legal guardian\*\***

Signature of Participant	Signature of Parent/Legal Guardian	Name of Parent/Legal Guardian
	(If participant is under 18 years of age)	
Date	Date	Date



Annex 2

## International Wushu Federation (IWUF) Medical Certificate (Sample)

### 1. PARTICIPANT INFORMATION

Surname				Color ID Photo
Given Name(s)				
Country		Postal Code		
Passport No.		Telephone No.		
Email				
Address				

### 2. QUESTIONS FOR PARTICIPANT (Attach relevant documents if you answered 'yes' to any of the following)

Is a doctor currently treating you?	
Have you ever been unconscious or had a concussion?	
Have you been hit hard in the head in the last 6 months?	
Have you had any headache in the last 2 weeks?	
Do you have any problems with bleeding?	
Do any diseases run in your family?	
Have you had any surgery?	
Have you ever had to stay in a hospital?	
Do you have any medical condition?	
Do you have a history of seasonal or drug allergies?	
Is there a history of sudden death under 45 years old in the family?	

### 3. MEDICAL DOCTOR INFORMATION

Surname	
Given Name(s)	
Telephone No.	
Address	



#### 4. MEDICAL EXAMINATION

Item				Abnormalities
Head	Cranial nerves, eyes, pupil size and reactivity. Fundi. Vision by chart.	Normal	Abnormal	
	Mouth, teeth, throat	Normal	Abnormal	
	Ears	Normal	Abnormal	
	Temporomandibular joint	Normal	Abnormal	
	Brain Examination: electroencephalogram (EEG) Test (Sanda athletes only)	Normal	Abnormal	
Neck	Cervical spine, lymph nodes	Normal	Abnormal	
Chest	Breath sounds, rib, tenderness on compression	Normal	Abnormal	
Neurological System	Reflexes	Normal	Abnormal	
	Verbal responses	Normal	Abnormal	
	Motor responses and balance	Normal	Abnormal	
Cardiovascular System	Heart rate	Normal	Abnormal	
	Blood pressure	Normal	Abnormal	
	Heart examination: electrocardiogram (ECG) Test	Normal	Abnormal	
Medications Used	Name and dosage	Yes	No	

#### 5. DOCTOR CONFIRMATION

I confirm that the Athlete is <input type="checkbox"/> fit / <input type="checkbox"/> not fit to participate in the competition.	Signature:  Place/Date:
--	-------------------------------

#### 6. NATIONAL FEDERATION CONFIRMATION

**I confirm that the above information provided is true and correct.**

National Federation			
Name of Representative			
Title of Representative			
Signature:			Date:





- RECOGNIZED BY / IN PARTNERSHIP WITH -

International Federation  
recognised by the



International  
Olympic  
Committee



INTERNATIONAL SCHOOL SPORT FEDERATION



- IWUF GLOBAL PARTNER -

恒源祥®

- IWUF GLOBAL SUPPLIER -

