



IWUF 10th  
Sanda World Cup

---

**REGULATIONS**

🕒 April 5-10, 2025

📍 Jiangyin, China

International Federation  
recognised by the



International  
Olympic  
Committee

**Version 3, issued on February 5, 2025 by IWUF**

© International Wushu Federation

Lausanne Office: Avenue de Rhodanie 58, 1007 Lausanne, Switzerland

Beijing Office: 9 Huaweili, Chaoyang District, 100021 Beijing, China

[www.iwuf.org](http://www.iwuf.org)



# CONTENTS

## I. GENERAL INFORMATION

<b>1. INTRODUCTION</b> .....	1
1.1. China Overview .....	1
1.2. Wuxi Overview.....	2
1.3. Jiangyin Overview.....	2
1.4. International Airport.....	3
1.5. Weather .....	4
1.6. Electricity .....	4
1.7. Telephone.....	4
<b>2. INTRODUCTION TO IWUF 10TH SANDA WORLD CUP</b> .....	4
<b>3. DATES &amp; PLACE</b> .....	4
3.1. Competition Date.....	4
3.2. Important Dates.....	4
3.3. Competition Place .....	4
<b>4. VENUES</b> .....	5
4.1. Competition Venue.....	5
4.2. Training Venue.....	5
<b>5. GENERAL PROGRAM</b> .....	6
<b>6. KEY CONTACTS</b> .....	6

## II. TECHNICAL INFORMATION

<b>7. COMPRTITION EVENTS</b> .....	7
7.1. Men’s Events .....	7
7.2. Women’s Events.....	7
<b>8. QUALIFICATIONS</b> .....	7
<b>9. PARTICIPATION METHODS</b> .....	7
<b>10. COMPETITION RULES</b> .....	8
<b>11. COMPETITION METHODS</b> .....	8
<b>12. COSTUMES &amp; EQUIPMENT</b> .....	8
12.1. Uniforms & Equipment for Competition .....	8
12.2. Uniforms for Ceremony.....	9
<b>13. PLACING &amp; AWARDS</b> .....	9



<b>14. AWARDS CEREMONY</b>	9
<b>15. ENTRIES</b>	9
15.1. Final Entry	9
15.2. Late Entry & Changes Policy	10
<b>16. ARRIVALS &amp; ACCREDITATION</b>	11
16.1. Arrivals	11
16.2. Accreditation	11
<b>17. WEIGHING-IN</b>	11
<b>18. TECHNICAL MEETING</b>	11
<b>19. DRAWING-LOTS</b>	12
<b>20. TECHNICAL OFFICIALS</b>	12
20.1. International Technical Officials (ITOs)	12
20.2. National Technical Officials (NTOs)	12
<b>21. SUPERVISORY COMMISSION</b>	13

### III. TEAM INFORMATION

<b>22. ACCOMMODATION</b>	14
22.1. Room Allocation Policy	14
22.2. Hotels Information:	14
<b>23. TRANSPORTATION</b>	16
23.1. Transport Services for Arrivals & Departures	16
23.2. Local Transport Services	16
<b>24. FINANCIAL CONDITIONS</b>	16
24.1. Teams	16
24.2. Technical Officials	17
24.3. Additional Costs	17
24.4. Payment Methods:	17
<b>25. DOPING CONTROL</b>	18
<b>26. RESPONSIBILITY OF MEMBER FEDERATIONS</b>	18
<b>27. PASSPORT &amp; VISA REQUIREMENTS</b>	18
<b>28. ANNEX</b>	19
Annex 1	20
Annex 2	23
Annex 3	25
Annex 4	27

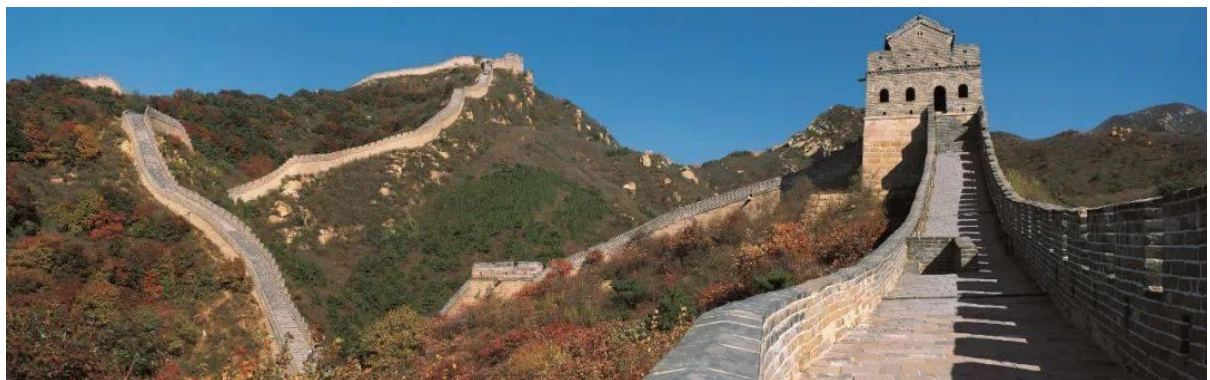


## I. GENERAL INFORMATION

### 1. INTRODUCTION

#### 1.1. China Overview

China, one of world' s most ancient civilizations, has a history dating back over 5,000 years. This has led to the country having an extraordinarily rich cultural heritage. As the world's largest developing country, China has seen remarkable progress in its economic and social development. Today' s China is politically and socially stable, and economically prosperous, with its people's lives getting better each day.



#### - **Geography**

China is located on the east side of Asia and the west edge of the Pacific Ocean. Covering a land area of about 9.6 million square kilometers, it features over 18,000 kilometers of continental coastline along its eastern and southern edges, and approximately 4.7 million square kilometers of inland and border seas. There are more than 7,600 islands of varying sizes in the sea area, among which the island of Taiwan, with an area of 35,798 square kilometers, is the largest.

#### - **Climate**

Given its sheer size, it is perhaps not surprising that China has a range of climates. Most of the country lies in northern temperate zone that features a mild, continental monsoon climate and four distinct seasons.

#### - **Population, Ethnicity and Language**

Population: 1,411.78 million.

Ethnicity: China is a multi-ethnic country with 56 ethnic groups in total.

Language: There are more than 80 local languages and about 30 Chinese writing systems. Mandarin (also



known as Putonghua) is the country's national language.

- **Religion**

Religion: China is a multi-religious country. The main religions are Buddhism, Taoism, Islam, Catholicism and Christianity. Chinese citizens enjoy freedom of religious belief.

- **Others**

China shares borders with 14 countries and is adjacent to eight countries by sea. The capital city is Beijing. China is comprised of provincial-level administrative divisions that can be further classified into: 4 municipalities directly under the central government, 23 provinces, 5 autonomous regions and 2 Special Administrative Regions.

Currency: The legal currency is renminbi (RMB), with yuan as the basic unit, and jiao and fen as fractions of this basic unit. One yuan is equal to 10 jiao and one jiao equal to 10 fen. Foreign currency can be freely exchanged in most hotels and banks on the Chinese mainland.

**1.2. Wuxi Overview**

Wuxi is a city in southern Jiangsu province, eastern China, 135 kilometers (84 mi) by car to the northwest of downtown Shanghai, between Changzhou and Suzhou, and one of the central cities in the Yangtze River Delta. The birthplace of Wu culture. As of the 2020 census, the city had a total population of 7,462,135 inhabitants.



Wuxi is a historically and culturally prominent city, and has been a thriving economic center since ancient times as a production as an export hub of rice, silk and textiles. In the last few decades it has emerged as a major producer of electrical motors, software, solar technology and bicycle parts.

**1.3. Jiangyin Overview**

Jiangyin is one of the most important transport hubs on the Yangtze River, Jiangyin's name means "River Shade", from its location on the south or shady side of the Yangtze River. It is also one of the most developed counties in China.

With 1,595,138 inhabitants as of the 2010 census,





the city is now part of Jiangyin-Zhangjiagang-Jingjiang built-up or metropolitan area with 3,526,260 inhabitants.

#### 1.4. International Airport

##### - Shanghai Pudong International Airport

Shanghai Pudong International Airport (IATA: PVG, ICAO: ZSPD) serves both international flights and a smaller number of domestic flights, while the city's other major airport, Shanghai-Hongqiao, mainly serves domestic and regional flights in East Asia. The distance between Shanghai Pudong International Airport and the Accreditation Center is 164 kilometers (about three hours by bus).

Shanghai Pudong International Airport is one of two international airports serving Shanghai, the municipality in East China, and a major aviation hub of East Asia. In 2022, Shanghai Pudong International Airport registered 14,178,400 passengers.



##### - Wuxi Shuofang Airport

Wuxi Shuofang Airport (IATA: WUX, ICAO: ZSWX) is an airport serving the cities of Wuxi and Suzhou in southern Jiangsu Province, China. The distance between Wuxi Shuofang Airport and the Accreditation Center is 56 kilometers (about one hour by bus).

Wuxi Shuofang Airport is located in Shuofang Subdistrict in Xinwu District, 12 kilometers southeast of Wuxi and 22 kilometers northwest of Suzhou. In 2022, Wuxi Shuofang Airport registered 3,768,868 passengers.





### 1.5. Weather

Historical average temperatures for Jiangyin in April range from 12°C-23°C.

### 1.6. Electricity

The electricity standard in China is 220V (50Hz).

### 1.7. Telephone

To call China from abroad, dial +86 (country code) followed by the city code, followed by the local number.

## 2. INTRODUCTION TO IWUF 10TH SANDA WORLD CUP

The IWUF Sanda World Cup (SWC) is an official event hosted by the International Wushu Federation (IWUF). This prestigious competition typically occurs biennially, showcasing the top sanda athletes from the most recent World Wushu Championships (WWC), but the 10<sup>th</sup> SWC held in Jiangyin, China also includes elites from the International Wushu Invitational Tournament 2024 (IWIT 2024). With the first edition taking place in 2002, the SWC has been held ten editions so far. The Chinese Wushu Association (CWA) is responsible for the organization of the 10<sup>th</sup> SWC under the auspices of the IWUF.

For more information on this event, please visit the IWUF official website <http://www.iwuf.org>, also visit the official social media, Facebook, Instagram (IG), YouTube.

## 3. DATES & PLACE

### 3.1. Competition Date

April 5- 10, 2025.

### 3.2. Important Dates

#### - Online Final Entry

Open: February 5, 2025.

Deadline: 24:00 (Beijing Time) on March 5, 2025.

#### - Late Entry (Upon accepted by IWUF)

Duration: March 6, 2025 - 24:00 (Beijing Time) on March 20, 2025.

### 3.3. Competition Place

Pegasus Watertown, Jiangyin City, China.



## 4. VENUES

The Culture and Sports Indoor Stadium is designed based on the architecture of the ancient Roman Colosseum in Italy, integrating the functions of modern sports architecture with classical architectural forms. This stadium is used for hosting various competitions, performances, and large-scale events such as national fitness. It was put into use on January 30, 2024.

The Culture and Sports Indoor Stadium is located at No. 1 Minle Road, Xinqiao Town, Jiangyin City, Jiangsu Province, with a total construction area of 118,000 square meters and a main competition venue area of over 9,000 square meters. It can support four venues for competitions and can accommodate nearly 6,000 people to watch the events simultaneously.



In 2024, the International Wushu Invitational Tournament 2024 hosted by the IWUF was held in the Culture and Sports Indoor Stadium.

### 4.1. Competition Venue

The Culture and Sports Indoor Stadium.

### 4.2. Training Venue

The Auxiliary Stadium of the Culture and Sports Indoor Stadium.

**5. GENERAL PROGRAM**

<b>Date</b>	<b>Time</b>	<b>Activity</b>	<b>Location</b>
April 5 (SAT)	All Day	Team Arrivals & Registration Judges Arrivals & Registration	TBD
April 6 (SUN)	06:30 - 08:00	Weigh-in	TBD
	10:00 - 12:00	Technical Meeting & Drawing-Lots	TBD
	All Day	Team Training Judges' Refresher Course & Rehearsal	TBD
April 7 (MON)	06:30 - 07:30	Weigh-in	TBD
	09:00 - 12:00	Competition	Culture and Sports Indoor Stadium
	19:00 - 22:00	Competition	
April 8 (TUE)	06:30 - 07:30	Weigh-in	TBD
	09:00 - 12:00	Competition	Culture and Sports Indoor Stadium
	19:00 - 22:00	Competition	
April 9 (WED)	06:30 - 07:30	Weigh-in	TBD
	09:00 - 12:00	Competition	Culture and Sports Indoor Stadium
	19:00 - 22:00	Competition	
April 10 (THUR)	Before 14:00	Departures	

★ Note: This program is subject to change.

**6. KEY CONTACTS****- IWUF Secretariat**

Tel: +86-10-87774492

Email: events@iwuf.org

**- Chinese Wushu Association (CWA)**

Tel: +86-10-64912153

Email: wushu@wushu.com.cn

**- Local Organizing Committee of IWUF 10<sup>th</sup> SWC (LOC)**

Local organizer: Jiangyin Shengshi Sports Events Co., Ltd

Tel: +86-18380436849

Email: biyuezhao@outlook.com



## II. TECHNICAL INFORMATION

### 7. COMPETITION EVENTS

#### 7.1. Men's Events

48kg, 52kg, 56kg, 60kg, 65kg, 70kg, 75kg, 80kg, 85kg, 90kg, 90kg+.

#### 7.2. Women's Events

48kg, 52kg, 56kg, 60kg, 65kg, 70kg, 75kg.

### 8. QUALIFICATIONS

The following athletes competing the events under **Article 7** qualify for the 10<sup>th</sup> SWC. All qualified athletes are listed in Annex 1.

- The top 3 placed athletes (3<sup>rd</sup> place juxtaposed) from the 16<sup>th</sup> WWC.
- Two seats by top ranking order from the IWIT 2024.

Each member federation can enter at most one 1 team, hereinafter the member federation is referred to as "NF". Each team can have no more than 8 athletes.

All athletes who must be 40 years old and under, i.e. born in 1985 and after, can participate in the 10<sup>th</sup> SWC.

Those athletes that have qualified but do not compete in the 10<sup>th</sup> SWC will be replaced by the athletes appointed by the IWUF.

Each qualified athlete must be submitted into the 10<sup>th</sup> SWC by the IWUF Members.

Accompanying team officials:

- Teams that have 1 - 3 qualified athlete(s) may submit 2 team officials at most.
- Teams that have 4 - 5 qualified athletes may submit 3 team officials at most.
- Teams that have 6 - 7 qualified athletes may submit 4 team officials at most.
- Teams that have 8 qualified athletes may submit 5 team officials at most.

### 9. PARTICIPATION METHODS

Each qualified athlete may only participate within the events he or she has qualified for.

The remaining vacated quotas will be filled by the athletes appointed by the IWUF.



Team leader must submit the following documents upon registration with the LOC:

- Completed and signed Waiver of Liabilities of all participants (Annex 2).
- Medical Certificates of all athletes issued by a qualified medical doctor from a check-up performed within a period of 30 days prior to the date of registration at the competition (Annex 3).
- Life Accidental Injury Insurance Certificates of all athletes.

## 10. COMPETITION RULES

Unless otherwise stated within these regulations, the competition will be conducted in accordance with the "IWUF Wushu Sanda Competition Rules & Judging Methods 2024" (hereinafter referred to as "rules"). The rules may be interpreted solely at the discretion of the IWUF. In case of any disagreement in the interpretation of the rules, the English version shall prevail.

## 11. COMPETITION METHODS

The competition will utilize the single-knockout system. However, if the number of athletes in a given weight category is 3, a single round-robin competition system will be adopted.

Following arrival and accreditation, athletes will undergo an initial weigh-in and drawing-lots as stipulated in the schedule. Athletes that are competing on a specific day of competition are required to weigh-in at the specific time and place prior to the start of the day's event.

## 12. COSTUMES & EQUIPMENT

All teams must follow the IWUF Brand Control Guidelines for Wushu Competition Uniforms (excerpt) (Annex 4).

### 12.1. Uniforms & Equipment for Competition

Athletes shall wear costumes and protective gears in compliance with the rules to participate in the competition.

Each athlete must provide 2 sets of competition uniforms: 1 set in red and 1 set in blue.

Each athlete must provide their own gum guard, groin cups, and hand wraps.

Gloves, headgear and chest protector manufactured by the IWUF's certified supplier(s) will be provided by the Organizing Committee.

**Men's athletes will not wear headgears and chest protectors.**



## 12.2. Uniforms for Ceremony

All teams must wear their official national/territorial team uniforms at the Opening and Closing Ceremonies.

Medalists are expected to attend the Awards Ceremony in their national/territorial team uniforms.

## 13. PLACING & AWARDS

<b>1<sup>st</sup> place</b>	Gold Medal & Certificate, RMB 10,000 yuan prize money.
<b>2<sup>nd</sup> place</b>	Silver Medal & Certificate, RMB 6,000 yuan prize money.
<b>3<sup>rd</sup> place</b> (juxtaposition)	Bronze Medal & Certificate, RMB 3,000 yuan prize money.

## 14. AWARDS CEREMONY

**Ten minutes** before the Awards Ceremony starts, the medalists will be escorted by staff to the Waiting Area to get ready for the ceremony.

Medalists are required to attend the Awards Ceremony to receive their medals in person.

Medalists are expected to take off caps/hats/sunglasses during the Awards Ceremony.

Athletes are required stand to face the flags while they are being raised.

Athletes and team officials are not allowed to take any other national, cultural or religious symbols to or onto the podium.

In case a medalist is unable to attend the ceremony for a valid reason, his/her medal and certificate may be presented to an official of the relevant delegation. Absence without a valid reason will forfeit the right to receive a medal.

If there are fewer than 3 medalists in a single event, no Awards Ceremony will be held for that event. The team leader will go to the designated place to receive the medals and certificates.

## 15. ENTRIES

### 15.1. Final Entry

All final entries must be submitted through the IWUF Online Registration System.

#### - **IWUF Online Registration System**

URL: <https://registration.iwuf.org>



Contact person: HUANG Xilong

Tel: +86-19952270889

Email: Service@jyywty.com

Tech-support: Jiangyin Yunwu Shiwu Sports Technology Co., Ltd

All sections of the online entry must be completed in full, including the uploading of the following documents:

- Photos of the participants (White background. Head filling 70 - 80% of the photo. At least 480 pixels (width)\*600 pixels (height))
- Passports of the participants (at least six months following their final day of travel).

The deadline for the final entry to be completed through the online system is 24:00 (Beijing Time) on **March 5, 2025**. Each team is required to print a copy of the submitted entry and present it upon arrival and registration in Jiangyin.

### 15.2. Late Entry & Changes Policy

Teams with requests for late entry or changes must submit a written document for approval and shall pay corresponding fees before the late entry deadline, otherwise request will be denied.

The deadline for late entry and changes is due on **March 20, 2025**, 24:00 (Beijing Time).

Late entries or information changes (team official replacement, changes due to incorrect or missing registration information) are subject to the approval of the IWUF and, if accepted, are subject to a late-entry fee of **US\$100** per person. The above fees must be paid via wire transfer to the IWUF before **March 20, 2025**, 24:00 (Beijing Time).

Beneficiary Name/Bank account name	International Wushu Federation
Beneficiary Address	Avenue de Rhodanie 58, 1007 Lausanne, Switzerland
Bank Name	UBS AG
Bank address	Place St-François 16, Case postale, CH-1002 Lausanne, Switzerland
Bank account number	0243-166188.61X
Bank clearing	0243
SWIFT code	UBSWCHZH80A
IBAN	CH680024324316618861X
Company taxpayer identification number	CH TVA No. CHE-436.351.545
Country	Switzerland



## 16. ARRIVALS & ACCREDITATION

### 16.1. Arrivals

All teams and judges are required to register with the LOC at the designated Accreditation Center no later than 24:00 (Beijing Time) on **April 5, 2025**.

### 16.2. Accreditation

Accreditation Center(s) will open at **9:00** (Beijing Time) on **April 5, 2025**.

Upon arrival at the Accreditation Center, the team leader is required to complete the following process with the LOC.

1	Present each team members' passport
2	Submit Final Entry Form with signature and stamp and confirm the registration information
3	Submit 3 national flags (size: 1m*2m)
4	Submit national anthem (short version) in MP3 format on a CD or USB flash drive
5	Submit signed Waiver of Liabilities of all participants (Annex 2)
6	Submit valid Medical Certificate (Sample) of all athletes (Annex 3)
7	Submit valid Life Accidental Injury Insurance Certificates of all athletes
8	Pay the relevant participation fees in full (if applicable)
9	Pay the relevant penalty fees in full (if applicable)
10	Submit a bank receipt of payment (either in paper or electronic documents)
11	Sign and confirm all the above items are completed

Accreditation cards will be given to the team leader upon completion of the accreditation process. All personnel must participate in the official activities with their accreditation card during the 10<sup>th</sup> SWC.

## 17. WEIGHING-IN

The first official weigh-in for all athletes will take place at **6:30** (Beijing Time) on **April 6, 2025**. Furthermore, the weigh-in will be conducted on daily basis at **6:30** (Beijing Time), athletes must attend a weigh-in on each day they participate in competition (specific places for each weigh-in will be announced accordingly).

**Accreditation cards and passports** must be presented at each weigh-in session. An athlete's failure to attend any required weigh-in will result in his/her disqualification from the competition.

## 18. TECHNICAL MEETING



The technical meeting for team managers and coaches will take place at **10:00** on **April 6, 2025**. Each team should send 2 representatives to attend the meeting.

The technical meeting content will be presented as follows:

- IWUF Event Guidelines (IWUF representatives)
- Event Logistics Information (LOC representatives)
- Event Technical Details (Chair of Jury of Appeals and Chief Referee)
- Other Matters

The place of the technical meeting will be announced in due course.

## **19. DRAWING-LOTS**

The drawing-lots of the 10<sup>th</sup> SWC will take place after the technical meeting. Each team may send 2 representatives to attend the session.

The Jury of Appeals will draw on behalf of the teams that are unable to send a representative to attend.

## **20. TECHNICAL OFFICIALS**

### **20.1. International Technical Officials (ITOs)**

The IWUF will select and appoint the independent judges and the Jury of Appeals at its discretion to serve at the 10<sup>th</sup> SWC.

All judges of the 10<sup>th</sup> SWC must hold their valid IWUF Judge's License at the time of the competition.

#### **- Registration**

The Jury of Appeals and all independent judges appointed by the IWUF shall submit their registration Information through the IWUF Online Registration System.

All judges of the 10<sup>th</sup> SWC must input their valid IWUF judge's license numbers through the IWUF Online Registration System.

#### **- Uniforms**

All ITOs shall prepare their own black jackets, white shirts, black slacks, and black leather shoes, as well as bring the IWUF ties/scarfs.

### **20.2. National Technical Officials (NTOs)**



All NTOs served at the 10<sup>th</sup> SWC will be nominated by the LOC.

## 21. SUPERVISORY COMMISSION

The 10<sup>th</sup> SWC Supervisory Commission shall be established by the IWUF, with the purpose of and the right to resolve any disputes or investigate any issues that arise during the course of this competition to ensure the smooth execution of the event.

The Supervisory Commission for an IWUF competition consists of 3 - 5 members appointed by the president of the IWUF and is responsible for overseeing the competition management and dispute mediation for the entire duration of this competition and not beyond. Specific descriptions of responsibilities include:

- The commission will ensure that competitions adhere to principles of fair play, impartiality, and transparency.
- The commission represents the IWUF in handling disputes regarding the competitions that arise between the NFs and/or teams and/or LOC, and has the right to resolve such disputes. However, the Commission does not directly interfere with the competition proceedings or disputes arise within the competition, which are responsibility of the Jury of Appeals and the relevant judging panel.
- The commission represents the IWUF in coordinating between the NFs and/or teams and/or LOC.
- The commission shall report any irregularities or violations observed during the competitions to the IWUF president and the IWUF Executive Board.
- The commission shall monitor and demand that NFs take responsibility for their athletes' general attitude and comportment



### III. TEAM INFORMATION

#### 22. ACCOMMODATION

All participants are required to lodge at the designated hotels as arranged by the LOC.

The LOC will arrange accommodation and meals for all participants **from the evening on April 5, 2025, until the midday on April 10, 2025.**

**The LOC will provide free-of-charge accommodation and meals for those in-quota athletes and team officials who have qualified from the 16<sup>th</sup> WWC based on the regulations.**

Participants who would like to arrive earlier or depart later than the required dates should provide the dates for the intended duration of stay during the final registration process, and must ensure to book accommodations accordingly, with daily rates applying for extended stays and taking the hotel check-in time of **15:00** into consideration.

##### 22.1. Room Allocation Policy

In-quota athletes and team officials from the 16<sup>th</sup> WWC will be accommodated in double rooms. Should anyone require a single room, he/she will be charged for a room upgrade fee of US\$40 per person per night.

Teams with odd number of delegates, the extra single delegate will be allocated by the LOC in double room with the other team's member, if the individual chooses not to pay for the price of a single room.

The LOC will allocate the hotels for teams based on the other they submit their final entry.

##### 22.2. Hotels Information:

- **Team hotel: Pegasus Watertown Hotel (3 stars)**

**Address:** No.888, Nanhuan Road, Jiangyin City, Jiangsu Province, China

**Telephone:** +86-510-81699000

Distance to Culture and Sports Indoor Stadium is 5 minutes by walking.

Jiangyin Pegasus Watertown Hotel is located in the scenic area of Heilan Pegasus Watertown in Jiangyin City, with elegant environment and complete facilities. It is a theme resort based on horse elements and integrates dining, guest rooms, entertainment and leisure shopping. The hotel has 249 rooms, next to Marrisle hotel and Taoyuan Resort, the mid-range and high-end are available.



<b>Participation Fee</b> Per Person Per Night	<b>Single Room</b> Only one person allowed	<b>Double Room</b> Two persons allowed
In-quota athletes & team officials from IWIT 2024	US\$130	US\$110
Extra-quota team officials & observers from 16 <sup>th</sup> WWC & IWIT 2024	US\$150	US\$130

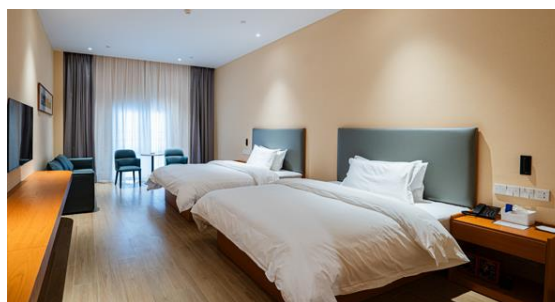
- **Judge hotel: Taiji Research Institute**

**Address:** No.888, Nanhuan Road, Jiangyin City, Jiangsu Province, China

**Telephone:** +86-510-81699000

Distance to Culture and Sports Indoor Stadium is 2 minutes by walking.

Taiji Research Institute covers a total area of 1,000 square meters and consists of four floors. The first to third floors have multiple rooms, currently 30 rooms available. The first floor also features an anti-doping restaurant to provide more comprehensive support for professional athletes, the second floor is designated as an office area, while the fourth floor offers a 3,000-square-meter multi-functional space to meet the needs of daily training, small-scale competitions, and training courses.



- **Headquarter hotel: Marrisle Hotel (5 star)**

**Address:** No.888, Nanhuan Road, Jiangyin City, Jiangsu Province, China

**Telephone:** +86-510-81699000



Distance to Culture and Sports Indoor Stadium is 15 minutes by walking.

Jiangyin Marrisle Hotel is located in the tourism scenic area of Pegasus Watertown in Jiangyin city. The hotel has an elegant environment and complete facilities. It is an artistic cultural theme resort hotel with a main theme of horse elements, including catering, rooms, entertainment, and leisure. There are more than 200 delicate rooms, 16 special catering halls, and 4 banquet halls. The hotel also has lobby bar, swimming pool, SPA room, fitness room, beauty salon, and executive lounge. The Hotel interprets the traditional classic in modern architectural form, with the round banquet hall and curved hotel building complementing each other, like two pearls reflecting in the surrounding lake and canal, creating a magnificent scenery.



## 23. TRANSPORTATION

### 23.1. Transport Services for Arrivals & Departures

The LOC will provide all participants with the transport services between the designated airports/Wuxi East Railway Station/Zhangjiagang Railway Station and the official hotels.

### 23.2. Local Transport Services

Local transport services between the official hotels and the venues (if required) will be provided by shuttle buses. A detailed transport schedule will be provided upon arrival.

## 24. FINANCIAL CONDITIONS

### 24.1. Teams

The international airfare and related travel expenses of all team participants shall be borne by the teams themselves. The LOC will provide **free-of-charge** accommodation and meals for in-quota athletes and team officials who qualified from the 16<sup>th</sup> WWC.

Athletes and accompanying officials of the IWIT 2024 who have been selected for the 10<sup>th</sup> SWC will be



responsible for their own expenses.

All extra-quota athletes and officials will be responsible for their own accommodation and meals expenses.

**24.2. Technical Officials**

The international airfare, accommodation, meals and related travel expenses will be borne by the LOC.

**24.3. Additional Costs**

Participants arriving early or departing late may be subject to additional costs related thereto which shall be borne by the participants themselves.

**24.4. Payment Methods:**

All teams are required to pay the relevant participation fees by international wire transfer with their final entry submission.

Following the submission of a final entry, the LOC will contact each team and provide them with their invoice, which will state totals and bank/payment details. Teams are then required to transfer the full amount as stated on the invoice. All international wire transfer and bank fees are to be paid by the teams transferring the funds themselves.

Proof of full payment should be sent to the LOC by email and brought along to Jiangyin by the team leader. The LOC requires that all participation fees are to be paid in advance in order to secure accommodation as required by the official hotels. The LOC will be unable to guarantee a team's required accommodation without pre-payment in full. Teams are requested to be mindful of this when submitting their final entry. The bank information of the LOC is as follows:

Bank Name	Bank of China Jiangyin Branch
Account Name	Jiangyin Shengshi Sports Events Co. Ltd
Account Number (IBAN):	496280307191
SWIFT Code	BKCHCNBJ95C
Beneficiary Bank Holder Address	Lijiatang A-001 Weili village, Xinqiao Town, Jiangyin City, Wuxi City, Jiangsu, P.R. China, 214426
Bank Address	No.1 Middle Renmin Road, Jiangyin City, Jiangsu, P.R. China
<b>Note:</b> Any service charges incurred for international wire transfers shall be borne by participants themselves.	



## 25. DOPING CONTROL

Doping control will be conducted during the 10<sup>th</sup> SWC according to the requirements of the International Olympic Committee (IOC) and the World Anti-Doping Agency (WADA), and will follow the procedure prescribed in the IWUF Anti-Doping Rules. The number of tests will be decided by the International Testing Agency (ITA). If an athlete is found have positively doped through the doping process, he/she will be dealt with in accordance with the IWUF Anti-Doping Rules.

## 26. RESPONSIBILITY OF MEMBER FEDERATIONS

The Member Federations (NFs) are responsible for their officials, coaches, athletes, and observers adhering to the IWUF and to all relevant rules established by the IWUF and the Organizing Committee. NFs should ensure that their participants hold themselves to the highest standards in all their actions during the event.

### - **Fundamental Principles**

All NFs' members participating in the 10<sup>th</sup> SWC must observe and respect the IWUF constitution, rules, regulations, and representatives. Individuals deemed to have acted against the IWUF, its principles, interests or purpose may be subject to suspension or expulsion from the event and/or cancellation of their accreditation.

### - **Attitude of Athletes and Coaches**

The athletes will compete under the responsibility of their NFs. NFs are fully responsible regarding the general attitude and comportment of their athletes. Coaches should respect the judging panel and all complaints must be conducted in accordance with competition procedures. Athletes and Coaches should comply with the IWUF Code of Ethics. Any act against the IWUF judging panel may be subject to suspension or expulsion from the event and/or cancellation of their accreditation and/or competition results.

### - **Image of Athletes**

Each NF is responsible for obtaining the rights for the IWUF to use its athletes' images at the discretion of the IWUF for promotional purposes in all forms.

### - **Insurance**

Each NF is fully and sole responsible for insuring its athletes against injury and third-party risk (public liability) during the period of the 10<sup>th</sup> SWC. The IWUF and the Organizing Committee are not responsible in part or in whole of the said liability.

## 27. PASSPORT & VISA REQUIREMENTS



All participants must hold a valid passport and should allow plenty of time for visa application and processing.

To ensure as few complications during visa application and travel as possible, it is suggested that all participants' passports are valid for at least six (6) months following their final day of travel.

Teams that require visa invitation letters should state their requests in the Final Entry by 24:00 (Beijing Time) **March 5, 2025.**

If you need any assistance on visa issues, please contact the LOC's email.

**NOTE: It is strongly recommended for teams that need to apply for visas do so immediately.**

## **28. ANNEX**

Annex 1: List of Qualified Athletes

Annex 2: Wavier of Liabilities

Annex 3: Medical Certificate (Sample)

Annex 4: IWUF Brand Control Guidelines for Wushu Competition Uniforms (excerpt)



## Annex 1

## IWUF 10<sup>th</sup> Sanda World Cup

### List of Qualified Athletes

No.	NF	Event	Athlete's Name	Qual. Way	P. Fee Paid By
1	ARG	Women's 60KG	Sabrina Maria DETOMA	16 <sup>th</sup> WWC	LOC
2	AUS	Men's 85KG	Michael Nicholas WOODWARD	16 <sup>th</sup> WWC	LOC
		Women's 65KG	Nicole LOWE-TARBERT	16 <sup>th</sup> WWC	LOC
3	AZE	Men's 60KG	Elchin EMINOV	16 <sup>th</sup> WWC	LOC
4	BAN	Men's 48KG	Md Nayon SHEIKH	IWIT 2024	NF
		Men's 60KG	Md Milon ALI	IWIT 2024	NF
		Men's 85KG	Sukanta ROY	IWIT 2024	NF
		Women's 52KG	Eiva Yesmin DISHA	IWIT 2024	NF
		Women's 75KG	Kachi Rani MONDAL	IWIT 2024	NF
5	BER	Women's 65KG	Krista Stepheny DYER	16 <sup>th</sup> WWC	LOC
6	BRA	Women's 52KG	Edinea PRADO CAMARGO	IWIT 2024	NF
		Women's 56KG	Beatriz ADRIAO RUSTICE SILVA	16 <sup>th</sup> WWC	LOC
7	CHN	Men's 48KG	Xingwen YANG	16 <sup>th</sup> WWC	LOC
		Men's 52KG	Sishuo TANG	16 <sup>th</sup> WWC	LOC
		Men's 65KG	Wei GUO	16 <sup>th</sup> WWC	LOC
		Men's 80KG	Wenlong LIU	16 <sup>th</sup> WWC	LOC
		Men's 90KG+	Xiang YE	16 <sup>th</sup> WWC	LOC
		Women's 52KG	Mengyue CHEN	16 <sup>th</sup> WWC	LOC
		Women's 56KG	Danfeng LIU	16 <sup>th</sup> WWC	LOC
		Women's 70KG	Hailan ZHU	16 <sup>th</sup> WWC	LOC
8	COL	Men's 85KG	Juan David ARMERO GUTIERREZ	16 <sup>th</sup> WWC	LOC
9	EGY	Men's 90KG+	Ahmed SAMIR ABDELMOAZ	16 <sup>th</sup> WWC	LOC
		Women's 75KG	Roba HOSSAM MOSTAFA ABDELAZIZ ELSHAFEI	16 <sup>th</sup> WWC	LOC
10	FRA	Men's 75KG	Yoan BENBEDRA	16 <sup>th</sup> WWC	LOC
11	HKG	Men's 60KG	Yu Hong LEUNG	16 <sup>th</sup> WWC	LOC
		Men's 70KG	Yat Lam CHEUNG	16 <sup>th</sup> WWC	LOC



(Continued)

No.	NF	Event	Athlete's Name	Qual. Way	P. Fee Paid By
11	HKG	Men's 90KG+	Jiahao CAI	IWIT 2024	NF
12	INA	Men's 52KG	Laksmna Pandu PRATAMA	16 <sup>th</sup> WWC	LOC
		Men's 56KG	Bintang REINDRA NADA GUITARA	16 <sup>th</sup> WWC	LOC
		Men's 65KG	Samuel MARBUN	16 <sup>th</sup> WWC	LOC
13	IND	Men's 48KG	Kushal KUMAR	16 <sup>th</sup> WWC	LOC
		Men's 52KG	Anuj ANUJ	IWIT 2024	NF
		Men's 65KG	Ravi PANCHAL	IWIT 2024	NF
		Men's 75KG	Mukesh CHOUDHARY	IWIT 2024	NF
		Women's 48KG	Chhavi CHHAVI	16 <sup>th</sup> WWC	LOC
14	IRI	Women's 60KG	Roshibina Devi NAOREM	16 <sup>th</sup> WWC	LOC
		Men's 70KG	Mohsen MOHAMMADSEIFI	IWIT 2024	NF
		Men's 75KG	Soheil MOUSAVI	IWIT 2024	NF
		Men's 80KG	Ali KHORSHIDIRABIE	IWIT 2024	NF
		Men's 85KG	Mohammadreza RIGI	IWIT 2024	NF
		Men's 90KG	Seyedmoein TAGHAVI	IWIT 2024	NF
		Women's 60KG	Soheila MANSOURIAN SEMIROMI	IWIT 2024	NF
		Women's 65KG	Sedigheh DARIAEIVARKADEH	IWIT 2024	NF
15	ITA	Women's 75KG	Shahrbano MANSOURIYAN SEMIROMI	IWIT 2024	NF
		Men's 70KG	Manuel DI CARLO	16 <sup>th</sup> WWC	LOC
		Men's 75KG	Michele BALDUCCI	16 <sup>th</sup> WWC	LOC
		Men's 80KG	Fabio GJONI	16 <sup>th</sup> WWC	LOC
		Women's 48KG	Gaia LAGONA	16 <sup>th</sup> WWC	LOC
16	KAZ	Women's 52KG	Elisa CALANDUCCI	16 <sup>th</sup> WWC	LOC
		Men's 56KG	Islam KARIMOV	16 <sup>th</sup> WWC	LOC
		Men's 65KG	Bexultan KOSKENOV	16 <sup>th</sup> WWC	LOC
		Men's 90KG+	Nursultan TURSINKULOV	16 <sup>th</sup> WWC	LOC
17	KGZ	Men's 75KG	Aknijet MARAT	16 <sup>th</sup> WWC	LOC
18	KOR	Men's 60KG	Avazbek AMANBEKOV	16 <sup>th</sup> WWC	LOC
		Men's 56KG	Minjun HONG	16 <sup>th</sup> WWC	LOC
		Men's 70KG	Gicheol SONG	IWIT 2024	NF
		Men's 75KG	Sanghun JO	16 <sup>th</sup> WWC	LOC



(Continued)

No.	NF	Event	Athlete's Name	Qual. Way	P. Fee Paid By
19	LBN	Women's 75KG	Lydia SALAMEH	16 <sup>th</sup> WWC	LOC
20	MAC	Men's 56KG	Hio Lam KU	16 <sup>th</sup> WWC	LOC
21	MEX	Men's 80KG	Kevin Alan GALLARDO ONOFRE	16 <sup>th</sup> WWC	LOC
22	NEP	Men's 80KG	Sanjeev MAHARJAN	IWIT 2024	NF
		Women's 56KG	Bidhya GURUNG	IWIT 2024	NF
23	PHI	Men's 48KG	Russel DIAZ	16 <sup>th</sup> WWC	LOC
		Men's 52KG	Arnel Roa MANDAL	16 <sup>th</sup> WWC	LOC
		Men's 56KG	Carlos Jr. BAYLON	IWIT 2024	NF
		Men's 60KG	Xander ALIPIO	IWIT 2024	NF
		Men's 65KG	Clemente TABUGARA JR.	16 <sup>th</sup> WWC	LOC
24	POR	Women's 48KG	Claudia ESTEVES PIRES	16 <sup>th</sup> WWC	LOC
25	ROU	Women's 65KG	Andreea Alexandra CEBUC	16 <sup>th</sup> WWC	LOC
26	SUI	Women's 60KG	Salome Yael SCHUMACHER	16 <sup>th</sup> WWC	LOC
27	TKM	Men's 80KG	Gochmyrat JUMANYYAZOV	16 <sup>th</sup> WWC	LOC
		Women's 70KG	Govher GOVSHUDOVA	16 <sup>th</sup> WWC	LOC
28	TPE	Men's 70KG	Huan Yi ZHANG	16 <sup>th</sup> WWC	LOC
29	TUN	Women's 70KG	Maya BEJAOU	16 <sup>th</sup> WWC	LOC
		Women's 75KG	Rimel KHALIFI	16 <sup>th</sup> WWC	LOC
30	USA	Men's 90KG	Livingston MCKENZIE JR	16 <sup>th</sup> WWC	LOC
31	UZB	Men's 56KG	Saydullo ABDURASHITOV	IWIT 2024	NF
		Men's 65KG	Bekzodbek YOGDIJONOV	IWIT 2024	NF
32	VIE	Men's 48KG	Hai TRAN HUY	16 <sup>th</sup> WWC	LOC
		Men's 52KG	Tam DINH VAN	16 <sup>th</sup> WWC	LOC
		Men's 60KG	Manh Cuong NGUYEN	16 <sup>th</sup> WWC	LOC
		Men's 70KG	Dat HUYNH DO	16 <sup>th</sup> WWC	LOC
		Women's 48KG	Lan NGUYEN THI	16 <sup>th</sup> WWC	LOC
		Women's 52KG	Nga NGO THI PHUONG	16 <sup>th</sup> WWC	LOC
		Women's 60KG	Thi Thu Thuy NGUYEN	16 <sup>th</sup> WWC	LOC
33	YEM	Men's 48KG	Tharwt Mahyoub Ali Naji AL-SENDI	IWIT 2024	NF

★ Note: This list is subject to change.



Annex 2

**International Wushu Federation (IWUF)  
 Waiver of Liabilities**

Federation				Color ID Photo
Name of Participant				
Date of Birth		Gender		
Nationality		Passport No.		
Role of Participant				
*Athlete *Team Manager *Coach *Doctor *Observer				

I, the undersigned, knowingly and without duress, do voluntarily submit my Entry to the 10<sup>th</sup> Sanda World Cup (SWC). The 10<sup>th</sup> Sanda World Cup is hosted by the International Wushu Federation (IWUF) and organized by the Chinese Wushu Association and the City of Jiangyin, hereafter the Chinese Wushu Association and the City of Jiangyin are referred as "Organizing Committee". I understand and acknowledge that the participation in the 10<sup>th</sup> Sanda World Cup involves inherent risk of losses, damages or injuries, including but not limited to risks deriving from participating in the competition and trainings, in the use of the sporting facilities or equipment and/or risks arising from actions or omissions of other participants or other third parties. I further understand that my participation in the 10<sup>th</sup> Sanda World Cup is subject to my agreement and acceptance of this Waiver of Liabilities ("Waiver"). In consideration of the IWUF and the Organizing Committee accepting my application, I hereby assume all risk of physical and mental injuries, disabilities and losses which may result from or in connection with my participation in the 10<sup>th</sup> Sanda World Cup. Acting for myself, heirs, personal officers, agents, representatives and assignees, I do hereby release, to the extent permissible, the IWUF and the Organizing Committee including all associates, auxiliaries and affiliates, such as but not limited to their officers, agents, employees, representatives, volunteers, judges and referees and other related members from all claims, actions, suits, and controversies related to any loss, damage or injury by reason of any matter, cause or thing whatsoever that I may sustain as a result of or in connection with my participation in the 10<sup>th</sup> Sanda World Cup. I fully understand and acknowledge that it is my sole responsibility to determine whether I am fit and healthy enough to participate in any events without posing a risk to myself or others. I hereby certify that, to the best of my knowledge, this is the case. I understand to have a duty to inspect the state of the used sporting facilities and equipment, and I waive any claim arising out of any respective defect. I fully understand that all medical attention or treatment afforded to me by the IWUF and the Organizing Committee including all associates, auxiliaries and affiliates, e.g. their officers, medical personnel, representatives, employees, volunteers, and all other related members, will be of the first aid type only, and I hereby consent to receiving such treatment and release the IWUF and the Organizing Committee as well as their officers, representatives, volunteers, employees and all other related members from any liability for such aid. I understand it is my personal obligation to obtain my own medical coverage. I am fully and solely responsible for adequately insuring myself against injury and third-party risk (public liability), with such insurance to cover the period before, during and after the event. The IWUF and the Organizing Committee including all associates are not responsible in part or in whole for any damages or medical or hospital expenses incurred as a



result of participation in the 10<sup>th</sup> Sanda World Cup.

I agree to abide by and follow the Rules established by the IWUF and the Organizing Committee and follow all received instructions. I acknowledge and agree that it is my personal responsibility to be informed about all aforementioned Rules and instructions. I agree that I will conduct myself in a professional and courteous manner at all times and to be subject to penalties and sanctions for violations related thereto, pursuant to the IWUF Constitution and the IWUF Ethics Code as updated from time to time and other Rules established by the IWUF and the Organizing Committee. I understand that any dispute must be resolved in accordance with the IWUF Constitution and any further applicable IWUF Rules. I agree that my performance, attendance, and participation at the 10<sup>th</sup> Sanda World Cup may be photographed, filmed or otherwise recorded or released or telecast live. I consent to allow the IWUF and the Organizing Committee use of my name, likeness, address, voices, poses, pictures, videos, live or non-live coverage and biographical and biological data concerning full or parts, in any form or language ("Identity, Voice and Image Data"), with or without other material, throughout the world, without limitation, for television, radio, video, theatrical medium picture, or any other medium and any other purpose by the IWUF or the Organizing Committee through any devices now known or hereafter devised and I do hereby waive any compensation in regard thereof as well as any future rights to the aforementioned. I also consent to the collecting, processing and use of all above-mentioned Identity, Voice and Image Data by the IWUF and the Organizing Committee for commercial and promotional services of sponsors and media partners as well as, where necessary, by third parties for the purpose of facilitating my participation an accreditation in the event (e.g. law enforcement authorities, border services agencies etc.).

Furthermore, while I note that the IWUF and the Organizing Committee will take into consideration my needs to rest, train and prepare for the events, I agree to be reasonably available during the Events for TV/digital/radio interviews, promotional or press photo sessions and press conferences at the dedicated areas.

If any provision of this Waiver is deemed to be invalid or unenforceable, the remaining provisions shall remain in full force and effect. This Waiver shall be governed by the IWUF Constitution, the further applicable Rules established by the IWUF and the Organizing Committee and, subsidiarily, by Swiss law.

I have read and fully understand the waiver listed above.

**\*\*For athletes under the age of 18 -This waiver must be signed by their parent or legal guardian\*\***

Signature of Participant	Signature of Parent/Legal Guardian	Name of Parent/Legal Guardian
	(If participant is under 18 years of age)	
Date	Date	Date



Annex 3

## International Wushu Federation (IWUF) Medical Certificate (Sample)

### 1. ATHLETE INFORMATION

Surname				Color ID Photo
Given Name(s)				
Country		Postal Code		
Passport No.		Telephone. No		
Email				
Address				

### 2. QUESTIONS FOR ATHELETE (Attach relevant documents if you answered 'yes' to any of the following)

Is a doctor currently treating you?	
Have you ever been unconscious or had a concussion?	
Have you been hit hard in the head in the last 6 months?	
Have you had any headache in the last 2 weeks?	
Do you have any problems with bleeding?	
Do any diseases run in your family?	
Have you had any surgery?	
Have you ever had to stay in a hospital?	
Do you have any medical condition?	
Do you have a history of seasonal or drug allergies?	
Is there a history of sudden death under 45 years old in the family?	

### 3. MEDICAL DOCTOR INFORMATION

Surname	
Given Name(s)	
Telephone No.	
Address	

**4. MEDICAL EXAMINATION**

Item				Abnormalities
Head	Cranial nerves, eyes, pupil size and reactivity. Fundi. Vision by chart.	Normal	Abnormal	
	Mouth, teeth, throat	Normal	Abnormal	
	Ears	Normal	Abnormal	
	Temporomandibular joint	Normal	Abnormal	
	Brain Examination: electroencephalogram (EEG) Test (Sanda athletes only)	Normal	Abnormal	
Neck	Cervical spine, lymph nodes	Normal	Abnormal	
Chest	Breath sounds, rib, tenderness on compression	Normal	Abnormal	
Neurological System	Reflexes	Normal	Abnormal	
	Verbal responses	Normal	Abnormal	
	Motor responses and balance	Normal	Abnormal	
Cardiovascular System	Heart rate	Normal	Abnormal	
	Blood pressure	Normal	Abnormal	
	Heart examination: electrocardiogram (ECG) Test	Normal	Abnormal	
Medications Used	Name and dosage	Yes	No	

**5. DOCTOR CONFIRMATION**

I confirm that the Athlete is <input type="checkbox"/> fit / <input type="checkbox"/> not fit to participate in the competition.	Signature:  Place/Date:
--	-------------------------------

**6. NATIONAL FEDERATION CONFIRMATION**

**I confirm that the above information provided is true and correct.**

National Federation			
Name of Representative			
Title of Representative			
Signature:			Date:



Annex 4

## **International Wushu Federation (IWUF) Brand Control Guidelines for Wushu Competition Uniforms (excerpt)**

### **PURPOSE**

To ensure sponsor and manufacture rights by establishing a standard for brand placement on uniforms and other clothing items used during IWUF wushu competition.

### **STANDARDS & GUIDELINES**

Uniforms of athletes, coaches and team officials

### **GENERAL REQUIREMENTS**

The manufacturer logo may appear once on each piece of clothing, with an area of up to 20 cm<sup>2</sup>. Note that only the quantity and size of logos appearing on uniforms will be assessed during the competition, and logos will not be reviewed for accuracy or adherence to brand standards.

The manufacturer logo may appear once on each accessory item (paired accessories are considered as two items), with an area of up to 6 cm<sup>2</sup>.

A manufacturer logo may appear once on each shoe or foot item (paired shoes or foot items are considered as two items), with an area of up to 6 cm<sup>2</sup>.

A national/regional Olympic Committee flag, a national/regional wushu federation flag/logo may each appear once where specified, with an area of up to 20 cm<sup>2</sup> each.

### **WUSHU SANDA COMPETITION UNIFORM REQUIREMENTS**

#### **Top/shirt**

##### **Front**

A flag may appear on the left chest area, with an area of up to 20 cm<sup>2</sup>.

The manufacturer logo may appear on the right chest area, with an area of up to 20 cm<sup>2</sup>.

Sponsor or other logos may be displayed in other areas but may not appear within 5 cm of the flag or manufacturer logo. The total number of sponsor or other logos may not exceed one, with a maximum area of 20 cm<sup>2</sup>.



**Back**

Sponsor or other logos may be displayed in back areas. The total number of sponsor or other logos may not exceed three, with a maximum area of 20 cm<sup>2</sup>.

**Shorts**

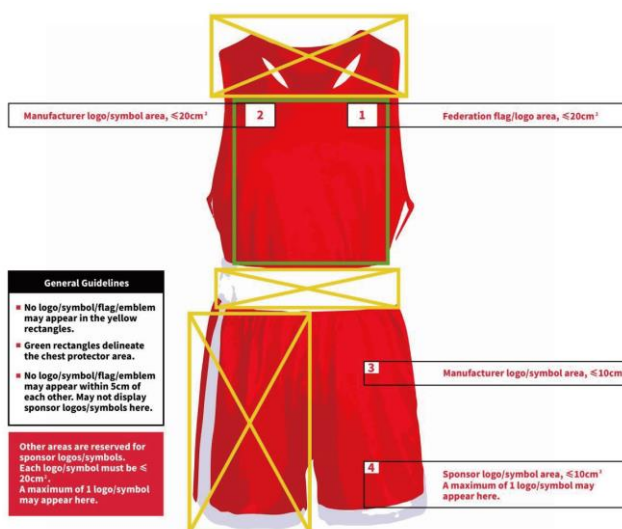
**Left leg**

The manufacturer logo may be arranged on the top, with an area of up to 10 cm<sup>2</sup>.

Sponsor logos may appear below the manufacturer's logo but may not appear within 5 cm of the manufacturer's logo. The total number of sponsor or other logos may not exceed one, with an area of up to 10 cm<sup>2</sup>.

**Right leg**

No logo, flag, or other emblem may appear.



# WU C S

IWUF APP



- RECOGNIZED BY / IN PARTNERSHIP WITH -

International Federation  
recognised by the



International  
Olympic  
Committee



INTERNATIONAL SCHOOL SPORT FEDERATION



- OFFICIAL SOCIAL MEDIA PLATFORMS -



YouTube



头条 今日头条  
信息创造价值

- IWUF APP -



- IWUF GLOBAL PARTNER -

恒源祥®

- IWUF GLOBAL SUPPLIER -

