



2025

International Wing Chun Competition

REGULATIONS

🕒 July 26–30, 2025

📍 Foshan, China

International Federation
recognised by the



International
Olympic
Committee

Version 2, issued on June 13, 2025 by IWUF

© International Wushu Federation

Lausanne Office: Avenue de Rhodanie 58, 1007 Lausanne, Switzerland

Beijing Office: 9 Huaweili, Chaoyang District, 100021 Beijing, China

www.iwuf.org



CONTENTS

I. GENERAL INFORMATION

1. INTRODUCTION.....	1
1.1 China Overview.....	1
1.1.1 Geography.....	1
1.1.2 Climate.....	1
1.1.3 Population, Ethnicity and Language.....	1
1.1.4 Religion.....	2
1.1.5 Others.....	2
1.2 Foshan Overview.....	2
1.3 International Airport.....	3
1.4 Weather.....	3
1.5 Electricity.....	3
1.6 Telephone.....	3
2. INTRODUCTION TO INTERNATIONAL WING CHUN COMPETITION.....	3
3. DATES AND PLACE.....	4
3.1 Competition Date.....	4
3.2 Important Dates.....	4
3.2.1 Final Entry.....	4
3.2.2 Late Entry and Changes.....	4
3.3 Competition Place.....	4
4. VENUES.....	4
4.1 Competition Venue.....	5
4.2 Training Venue.....	5
5. GENERAL PROGRAM.....	5
6. KEY CONTACTS.....	6

II. TECHNICAL INFORMATION

7. COMPETITION EVENTS.....	7
7.1 Routine Events.....	7
7.1.1 Bare-Hand Routines.....	7
7.1.2 Weapon Routines.....	7
7.1.3 Duilian (Choreographed Sparring) Routines.....	7



- 7.1.4 Jiti (Group) Routines 7
- 7.2 Intelligent Kungfu Pile 8
 - 7.2.1 Routines 8
 - 7.2.2 Skills 8
- 7.3 Mai Son Jong 8
- 7.4 Combined Events 8
- 8. AGE AND WEIGHT CATEGORIES 9
- 9. QUALIFICATIONS 9
 - 9.1 Membership 9
 - 9.2 Athlete Eligibility 9
- 10. PARTICIPATION METHODS 9
- 11. COMPETITION RULES 10
- 12. COMPETITION METHODES 10
 - 12.1 Routine Events 10
 - 12.2 Intelligent Kungfu Pile 10
 - 12.2.1 Compulsory Muk Yan Jong Routine 11
 - 12.2.2 Traditional Muk Yan Jong Routines 11
 - 12.2.3 Wing Chun Ri Zi Chong Quan 11
 - 12.2.4 Combination Techniques I 11
 - 12.2.5 Combination Techniques II 11
 - 12.2.6 Combination Techniques III 12
 - 12.3 Mai Son Jong 13
 - 12.4 Combined Events 13
- 13. COSTUMES AND EQUIPMENT 13
 - 13.1 Compliance Requirement of Marketing and Advertising 13
 - 13.2 Uniforms, Weaponry and Protective Gear Requirements for Competition 13
 - 13.2.1 Uniforms 13
 - 13.2.2 Weaponry and Protective Gear 14
 - 13.2.3 Competition Bib 14
 - 13.3 Clothing Requirements for Opening and Closing Ceremonies 14
 - 13.4 Clothing Requirements for Awards Ceremony 14
 - 13.5 Compliance Check at Roll-Call Area 14
- 14. PLACING AND AWARDS 14
 - 14.1 Placing 14
 - 14.1.1 Bare-Hand, Weapon and Duilian Routines, and Intelligent Kungfu Pile 14
 - 14.1.2 Jiti Routines 15



14.1.3 Mai Son Jong.....	15
14.1.4 Combined Events.....	15
14.2 Awards.....	15
14.2.1 Bare-Hand, Weapon and Duilian Routines, and Intelligent Kungfu Pile.....	15
14.2.2 Jiti Routines.....	16
14.2.3 Mai Son Jong.....	16
14.2.4 Combined Events.....	16
14.3 Participation Certificates.....	16
15. AWARDS CEREMONY.....	16
15.1 Medalists.....	16
15.2 Athletes and Team Officials.....	17
15.3 Medalists Absence.....	17
16. ENTRIES.....	17
16.1 Final Entry.....	17
16.2 Late Entry and Changes Policy.....	17
17. ARRIVALS AND ACCREDITATION.....	18
17.1 Arrivals.....	18
17.2 Accreditation.....	18
18. WEIGH-IN.....	19
19. TECHNICAL MEETING.....	19
20. DRAWING OF LOTS.....	19
21. TECHNICAL OFFICIALS.....	19
21.1 International Technical Officials (<i>ITOs</i>).....	19
21.1.1 Uniform.....	20
21.1.2 Judges' Refresher Course.....	20
21.2 National Technical Officials (<i>NTOs</i>).....	20
22. APPEALS AND ARBITRATION.....	20
22.1 Appeals.....	20
22.2 Arbitration.....	20
23. MISCELLANEOUS.....	20

III. TEAM INFORMATION

24. ACCOMMODATION.....	22
24.1 Hotel Reservation.....	22
1.6.1 Non-Compliance Policy.....	22



1.6.2	Reservation Principles	22
1.6.3	Meal Arrangements	22
1.6.4	Early Arrival and Late Departure Requirements	22
24.2	Room Assignment Rules	22
24.3	Hotel Information	23
24.3.1	VIP and Judge Hotel	23
24.3.2	Team Hotels	24
25.	TRANSPORTATION	26
25.1	Transport Services for Arrivals and Departures	26
25.2	Shuttle Services	27
26.	FINANCIAL CONDITIONS	27
26.1	Teams	27
26.2	Technical Officials	27
26.3	Additional Costs	27
26.4	Payment Methods	27
27.	RESPONSIBILITY OF MEMBER FEDERATIONS	28
27.1	Fundamental Principles	28
27.2	Attitude of Athletes and Coaches	28
27.3	Image of Athletes	28
28.	INSURANCE	28
29.	PASSPORT AND VISA REQUIREMENTS	29
30.	ANNEX	29
	Annex 1: Wavier of Liabilities	30
	Annex 2: Medical Certificate (Sample)	32
	Annex 3: IWUF Brand Control Guidelines for Wushu Competition Uniforms (excerpt)	34

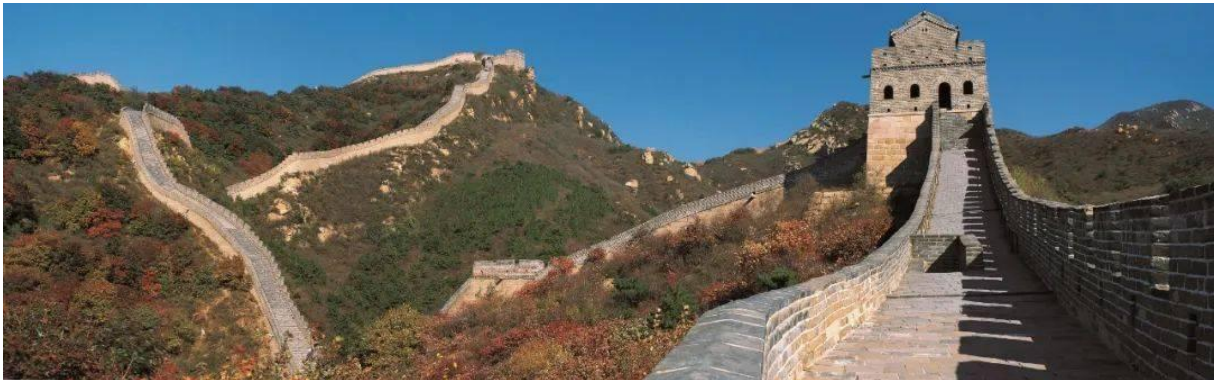


I. GENERAL INFORMATION

1. INTRODUCTION

1.1 China Overview

China, one of world's most ancient civilizations, has a history dating back over 5,000 years. This has led to the country having an extraordinarily rich cultural heritage. As the world's largest developing country, China has seen remarkable progress in its economic and social development. Today's China is politically and socially stable, and economically prosperous, with its people's lives getting better each day.



1.1.1 Geography

China is located on the east side of Asia and the west edge of the Pacific Ocean. Covering a land area of about 9.6 million square kilometers, it features over 18,000 kilometers of continental coastline along its eastern and southern edges, and approximately 4.7 million square kilometers of inland and border seas. There are more than 7,600 islands of varying sizes in the sea area, among which the island of Taiwan, with an area of 35,798 square kilometers, is the largest.

1.1.2 Climate

Given its sheer size, it is perhaps not surprising that China has a range of climates. Most of the country lies in northern temperate zone that features a mild, continental monsoon climate and four distinct seasons.

1.1.3 Population, Ethnicity and Language

Population: 1,411.78 million.

Ethnicity: China is a multi-ethnic country with 56 ethnic groups in total.

Language: There are more than 80 local languages and about 30 Chinese writing systems. Mandarin



(also known as Putonghua) is the country's national language.

1.1.4 Religion

Religion: China is a multi-religious country. The main religions are Buddhism, Taoism, Islam, Catholicism and Christianity. Chinese citizens enjoy freedom of religious belief.

1.1.5 Others

China shares borders with 14 countries and is adjacent to eight countries by sea. The capital city is Beijing. China is comprised of provincial-level administrative divisions that can be further classified into: 4 municipalities directly under the central government, 23 provinces, 5 autonomous regions and 2 Special Administrative Regions.

Currency: The legal currency is renminbi (RMB), with yuan as the basic unit, and jiao and fen as fractions of this basic unit. One yuan is equal to 10 jiao and one jiao equal to 10 fen. Foreign currency can be freely exchanged in most hotels and banks on the Chinese mainland.

1.2 Foshan Overview

Foshan is located in the central part of Guangdong Province, in the hinterland of the Pearl River Delta, bordering Guangzhou to the east and Hong Kong and Macao to the south. The city has a total area of 3,797.72 square kilometers, with a permanent population of about 9.6154 million at the end of 2023, of which the urban population accounts for as high as 91.72%. Foshan is one of the important manufacturing bases designated by the State Council, and it is also the economic and trade center on the west wing of the Pearl River Delta region and a comprehensive transportation hub.



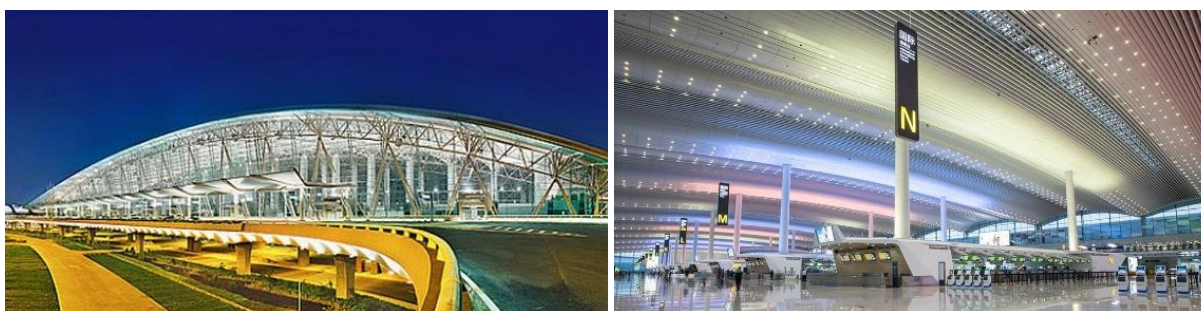
Foshan has a long history. It is one of the birthplaces and prosperous places of Lingnan Guangfu culture. It has traditional cultures such as Cantonese opera, ceramics, and paper-cutting, and is known as the hometown of pottery, martial arts, and Cantonese opera. Foshan is the birthplace of YE Wen and Bruce LEE. Wing Chun is very popular in Foshan with the practitioners of over 400,000 people.



1.3 International Airport

Guangzhou Baiyun International Airport (ICAO: ZGGG, IATA: CAN), located in the capital of Guangdong Province, is one of China's three major international aviation hubs. It is an important international aviation hub for the "Belt and Road" initiative and the "Air Silk Road". The airport has two runways and a 4F flight area grade, with a total area of 140,370 square meters. It can meet the take-off and landing needs of A380 and other large wide-body passenger aircraft, with 269 standard parking positions (including FBO). T1 terminal covers an area of 523,000 square meters, and T2 terminal covers an area of 880,700 square meters. The comprehensive transportation center has a construction area of more than 200,000 square meters. The new T3 terminal is under construction, with a planned building area of 422,000 square meters.

The distance between Guangzhou Baiyun International Airport and the LOC-designated hotels is 80 kilometers.



1.4 Weather

Historical average temperatures for Foshan in July range from 26°C–33°C.

1.5 Electricity

The electricity standard in China is 220V (50Hz).

1.6 Telephone

To call China from abroad, dial +86 (country code) followed by the city code, followed by the local number.

2. INTRODUCTION TO INTERNATIONAL WING CHUN COMPETITION

The International Wing Chun Competition (IWCC), co-hosted by the International Wushu Federation (IWUF) and the Chinese Wushu Association (CWA), is an international level sporting event to propagate the development of Wing Chun around the world. With the first edition taking place in 2018, the IWCC has been held two times so far.

This competition is open to Wing Chun practitioners worldwide and is based on the traditional kungfu concepts



of performance, training, power skill, and combat. This provides a platform for Wing Chun enthusiasts globally to fully showcase their abilities. The event is an important attempt and innovation by the IWUF to promote the development of traditional kungfu worldwide and encourage universal participation in kungfu. The IWCC 2025 will be held in Foshan, China from July 26 to 30, 2025 and features four events: routines, intelligent kungfu pile, Mai Son Jong, and combined events.

For more information on the IWCC 2025, please visit the IWUF official website <http://www.iwuf.org>, also visit the official social media, Facebook, Instagram (IG), YouTube.

3. DATES AND PLACE

3.1 Competition Date

(all the following dates and times in Beijing Time)

From July 28 to 29, 2025

3.2 Important Dates

3.2.1 Final Entry

From June 13 to July 5, 2025

3.2.2 Late Entry and Changes

(upon acceptance by IWUF)

From July 5 to July 17, 2025

3.3 Competition Place

Foshan City, Guangdong Province, China

4. VENUES

- **Feihong Pavilion** focusing on Wong Fei-hung Martial Arts Culture, features exhibition halls and interactive experience zones equipped with advanced audiovisual systems. It has hosted major events like the World Hung Kuen Championship and the National Nanquan Championship. The pavilion is conveniently located within a 10-minute walk of the Guangdong Qian Gu Qing cultural attraction.





Address: No. 6 Jinhu Avenue, Xiqiao Town, Nanhai District, Foshan City

- **Qiaoshan Cultural Center** adjacent to Xiqiao Mountain Scenic Area and Tingyin Lake, has hosted multiple editions of the Nanhai Martial Arts Culture Festival and integrates Lingnan architectural style. Surrounding the Qiaoshan Cultural Center are Tingyin Lake Plaza Food Street (Cantonese cuisine, tea restaurants, etc., 5-minute walk) and Xiqiao Mountain Scenic Area, Nanhai Guanyin Cultural Park (10-minute drive).



Address: Tingyin Lake Area, Xiqiao Town, Nanhai District, Foshan City

4.1 Competition Venue

- **Feihong Pavilion** (for routines and Mai Son Jong competition)
- **Qiaoshan Cultural Center** (for intelligent Kungfu pile competition)

4.2 Training Venue

TBD

5. GENERAL PROGRAM

Date	Time	Activity	Location
Jul. 26 (Sat)	Whole Day	Judges Arrivals and Registration	Judge hotel
		Team Arrivals and Registration	Team hotels
Jul. 27 (Sun)	08:30–11:30	Judges' Refresher Course	QCC
	14:00–16:30	Judges' Refresher Course and Rehearsal	Feihong Pavilion
	14:00–17:00	Team Training and Weigh-In	TBD
	15:00–16:30	Technical Meeting	QCC
	18:15–19:00	Opening Ceremony	Feihong Pavilion
Jul. 28 (Mon)	All Day	Competition	Competition Venues
Jul. 29 (Tue)	All Day	Competition	
Jul. 30 (Wed)	Before 14:00	Departures	

Note: 1. This program is subject to change depending on the number of the registered athletes.



2. QCC = Qiaoshan Culture Center.

6. KEY CONTACTS

- ***IWUF Secretariat***

Tel: +86-10-87774492

Email: events@iwuf.org

- ***Chinese Wushu Association (CWA)***

Contact person: TIAN Ye/WANG Jiaqi

Tel: +86-10-64912153

Email: wushu@wushu.com.cn

- ***Local Organizing Committee of IWCC 2025 (LOC)***

Contact person: Miss Chen/Miss Deng

Tel: +86-19103034913 (Miss Chen), +86-13143191455 (Miss Deng)

Email: 2660484738@qq.com (Miss Chen), 529570353@qq.com (Miss Deng)



II. TECHNICAL INFORMATION

7. COMPETITION EVENTS

7.1 Routine Events

7.1.1 Bare-Hand Routines

(for all age groups)

- Siu Nim Tao
- Chum Kiu
- Biu Jee
- Representative Bare-Hand Routines of Other Wing Chun Styles (Ye School, Ruan School, Yao School, Cen Neng School, Ling Nan School, Gu Lao School, Hong Chuan School, Shaolin Yongchun School, etc.)
- Junior Compulsory Wing Chun Kyun Routine
- Youth Compulsory Wing Chun Kyun Routine
- Optional Wing Chun Kyun Routine

7.1.2 Weapon Routines

(for all age groups)

- Batt Cham Dao
- Luk Dim Boon Gun

7.1.3 Duilian (Choreographed Sparring) Routines

(for Group A, B, C, and D only)

- Wing Chun Bare-Hand Duilian
- Wing Chun Weapon Duilian

NOTES: A Duilian group is composed of **2 or 3 athletes** and **genders may be mixed**.

7.1.4 Jiti (Group) Routines

(for Group A-B-C and Group D-E-F)

- Group Wing Chun Kyun Exercise
- Group Wing Chun Kyun Routine
- Group Wing Chun Weapon Routine



NOTES: Genders of athletes within Jiti routines are not limited. Each group must at least comprise of **8 athletes**. Group A-B-C indicates an age combination of Group A, Group B and Group C. Group D-E-F indicates an age combination of Group D, Group E and Group F.

7.2 Intelligent Kungfu Pile

7.2.1 Routines

- Compulsory Muk Yan Jong (Wooden Dummy) Routines
- Traditional Muk Yan Jong (Wooden Dummy) Routines

7.2.2 Skills

- Wing Chun Ri Zi Chong Quan
- Combination Techniques I
- Combination Techniques II
- Combination Techniques III

The weight categories of each age group are as follows:

Age Group	Weight Category
Group A1–A3	20kg, 24kg, 28kg, 32kg, 36kg, 40kg, 44kg, and 48kg
Group B	40kg, 44kg, 48kg, 52kg, 56kg, 60kg, 65kg, 70kg, and 75kg
Group C	48kg, 52kg, 56kg, 60kg, 65kg, 70kg, 75kg, 80kg, and 85kg
Group D	48kg, 52kg, 56kg, 60kg, 65kg, 70kg, 75kg, 80kg, 85kg, and 85kg+
Group E	48kg, 52kg, 56kg, 60kg, 65kg, 70kg, 75kg, 80kg, 85kg, and 85kg+
Group F	48kg, 52kg, 56kg, 60kg, 65kg, 70kg, 75kg, 80kg, 85kg, and 85kg+

7.3 Mai Son Jong

Age Group	Weight Category
Group A2–A3	36kg, 40kg, 44kg, and 48kg
Group B	40kg, 44kg, 48kg, 52kg, 56kg, 60kg, 65kg, 70kg, and 75kg
Group C	48kg, 52kg, 56kg, 60kg, 65kg, 70kg, 75kg, 80kg, and 85kg
Group D	48kg, 52kg, 56kg, 60kg, 65kg, 70kg, 75kg, 80kg, 85kg, and 85kg+

7.4 Combined Events

- Two Combined Events: 1 bare-hand routine and Mai Son Jong



8. AGE AND WEIGHT CATEGORIES

Age Group	Age Division	Year of Birth
Children age group 1 (Group A1)	7 years of age and below	Born in and after 2018
Children age group 2 (Group A2)	8–9 years of age	2016–2017
Children age group 3 (Group A3)	10–11 years of age	2014–2015
Junior age group (Group B)	12–14 years of age	2011–2013
Youth age group (Group C)	15–17 years of age	2008–2010
Adult age group (Group D)	18–39 years of age	1986–2007
Middle age group (Group E)	40–59 years of age	1966–1985
Elderly age group (Group F)	60 years of age and above	Born in and before 1965

9. QUALIFICATIONS

9.1 Membership

- Only those federations/associations which have paid their IWUF annual membership fees for 2024 and 2025 will be permitted to participate in the IWCC 2025.
- New IWUF member federations may be invited to take part in the IWCC 2025 after their membership applications have been accepted by the IWUF.

Hereinafter the IWUF member federation is referred to as “NF”.

9.2 Athlete Eligibility

- Athletes must be citizens or permanent residents of the country that they are representing.
- Athletes who have dual citizenship can only represent one country/territory in the competition.

10. PARTICIPATION METHODS

- Each NF can enter at most 1 team. The number of team leaders, coaches, doctors, athletes and observers, athletes are not limited.
- The entry fee for each athlete already includes registration fees for two events (routines). Any additional events (routines) will be charged at **USD 20** per person per event (routine).
- There is not limit on the number of Duilian routines which each team can enter. Each Duilian group may be composed of **2 or 3 athletes** and **genders may be mixed**.
- There is not limit on the number of Jiti routines which each team can enter. The age groups of Jiti routines competition are divided into 2 age categories: Group A-B-C and Group D-E-F. Genders of the athletes



within these groups **may be mixed**. Each group must be composed of **at least 8 athletes**.

Upon arrival at the Accreditation Desk, team leaders must submit the following documents:

- Completed and signed Waiver of Liabilities (Annex 1) of all participants, which must be signed by his/her parent or legal guardian for the participant who is under 18 years of age
- Medical Certificates of all athletes (Annex 2) issued by a qualified medical doctor from a check-up performed within a period of **15 days** prior to the date of registration at the competition
- Life Accidental Injury Insurance Certificates of all athletes

11. COMPETITION RULES

Unless otherwise stated within these regulations, the competition will be conducted in accordance with the competition rules as follows:

- Wing Chun routines competition will adapt **the IWUF Traditional Wushu Competition Rules and Judging Methods 2019**.
- Intelligent kungfu pile competition will adapt **the Intelligent Kungfu Pile Competition Rules 2025**.
- Mai Son Jong competition will adapt **the Canada Wushu Mai Son Jong Competition Rules and Judging Method 2024**.

Hereinafter the IWUF Traditional Wushu Competition Rules and Judging Methods 2019, the Intelligent Kungfu Pile Competition Rules 2025, and the Canada Wushu Mai Son Jong Competition Rules and Judging Method 2024 are referred to as "rules".

The rules may be interpreted solely at the discretion of the IWUF. In the event of language discrepancies in the rules, the English version shall prevail.

12. COMPETITION METHODES

12.1 Routine Events

- If the registered athletes of the single events in the individual routine events are **6 or more than 6 athletes**, then it will be considered as a medal event.
- If the registered athletes of each age group in a single event are **5 athletes or fewer**, these events will be combined respectively in accordance with the taolu-type of the bare-hand routines, weapon routines and Duilian routines.
- Routine time limits are subject to the rules or supplementary regulations of the relevant event.

12.2 Intelligent Kungfu Pile



12.2.1 Compulsory Muk Yan Jong Routine

Perform the routine according to the requirements of the compulsory Muk Yan Jong routine.

12.2.2 Traditional Muk Yan Jong Routines

Perform the routines according to the requirements of the traditional Muk Yan Jong routines.

12.2.3 Wing Chun Ri Zi Chong Quan

Apply Wing Chun Ri Zi Chong Quan technique to deliver 30 consecutive punches to Area A (head) of the intelligent kungfu pile.

12.2.4 Combination Techniques I

Apply the following combination techniques to deliver consecutive punches to the intelligent kungfu pile:

Combination Technique	Striking Part		Feet Position	
	Left Hand	Right Hand	Left Foot	Right Foot
Left hand stance (Starting posture)			Zone F	Zone F
Left Juen Ma → Left Wu Sau → Right lower Bong Sau		Lower Jong Sau	Zone F	Zone F
Left Sam Gwok Bo (triangle step) → Left Pak Sau → Right Fak Sau	Lower Jong Sau	Abdomen	Zone F	Zone E
Left retreat step → Left Wu Sau → Right Bong Sau → Right Waang Chaang Geuk			Zone H	Abdomen
Left hand stance (Closing posture)			Zone F	Zone F

12.2.5 Combination Techniques II

Apply the following combination techniques to deliver consecutive punches to the intelligent kungfu pile:

Combination Technique	Striking Part		Feet Position	
	Left Hand	Right Hand	Left Foot	Right Foot
Left hand stance (Starting posture)			Zone F	Zone F
Left Juen Ma → Left Wu Sau → Right lower Bong Sau		Lower Jong Sau	Zone F	Zone F



(Continued)

Left retreat step → Left Wu Sau → Right Bong Sau → Right Jing Geuk		Right Jong Sau	Zone H	Abdomen
Right step forward → Left punch → Right Gam Sau (pressing hand)	Head	Lower Jong Sau	Zone F	Zone E
Right punch		Head	Zone F	Zone E
Left punch	Head		Zone F	Zone E
Right punch		Head	Zone F	Zone E
Left hand stance (Closing posture)			Zone F	Zone F

12.2.6 Combination Techniques III

Apply the following combination techniques to deliver consecutive punches to the intelligent kungfu pile:

Combination Technique	Striking Part		Feet Position	
	Left Hand	Right Hand	Left Foot	Right Foot
Left hand stance (Starting posture)			Zone F	Zone F
Left step forward → Left Wu Sau → Right Bong Sau		Left Jong Sau	Zone F	Zone F
Double Lak Sau (capture hands) → Right Jit Geuk	Left Jong Sau	Left Jong Sau	Zone F	Stance Foot
Left Juen Ma → Left Fook Sau → Right punch	Left Jong Sau	Head	Zone F	Zone F
Left hand stance (Closing posture)			Zone F	Zone F

The final score of athletes of each above event is calculated by adding an athlete's power score, the maximum power score of a single punch and the speed score in a ratio of 6:2:2. The athlete with the higher score will be ranked higher.

The total score of athletes of the intelligent kungfu pile is calculated by adding an athlete's scores of the compulsory Mu Yan Jong routine, traditional Mu Yan Jong routines, Wing Chun Ri Zi Chong Quan, combination techniques I, combination techniques II and combination techniques III. The athlete with the higher score will be ranked higher.



12.3 Mai Son Jong

- Mai San Jong competition will utilize the single-knockout system.
- If the number of athletes in a given weight category is 3, a single round-robin competition system will be adopted.

12.4 Combined Events

- In the combined events, the scores of the top 8 athletes will be converted as follows:

- ***For bare-hand routines and Duilian routines***

Rank	1 st Place	2 nd Place	3 rd Place	4 th Place	5 th Place	6 th Place	7 th Place	8 th Place
Score	9 pts	7 pts	6 pts	5 pts	4 pts	3 pts	2 pts	1 pts

- ***For Mai Son Jong***

Rank	1 st Place	2 nd Place	3 rd Place (juxtaposition)	5 th Place (juxtaposition)
Score	9 pts	7 pts	5.5 pts	2.5 pts

- Each athlete ranking after the top 8 will receive 0.5 points.
- According to an athlete's combined scores of 2 events including 1 bare-hand routine and Mai Son Jong, the higher-scoring athletes will be ranked higher.
- For combined events, tied scores will be handled in the following order:
 - The athlete who placed first more will be ranked higher.
 - The athlete who placed second more will be ranked higher, and so on.
 - Should a tie still exist after following the above guidelines, the athletes scoring higher in Mai Son Jong will be ranked higher.

13. COSTUMES AND EQUIPMENT

13.1 Compliance Requirement of Marketing and Advertising

All teams must follow the IWUF Brand Control Guidelines for Wushu Competition Uniforms (excerpt) (Annex 3).

13.2 Uniforms, Weaponry and Protective Gear Requirements for Competition

13.2.1 Uniforms

- All athletes shall wear wushu competition uniforms in compliance with the rules during all



events.

- All athletes must provide their own uniform(s).

13.2.2 Weaponry and Protective Gear

- ***For routines competition***

- All competition weaponry will be provided by the LOC.

- ***For Mai Son Jong competitions***

- Gloves, headgear, chest protector and shin guard will be provided by the LOC.
- Each athlete is required to provide their own gum guard, groin cups and hand wraps.

13.2.3 Competition Bib

- The LOC will provide 2 competition bibs (20cm*15cm) to the teams for each athlete's use upon accreditation.
- The athlete should show his/her competition bib to the Head Judge before he/she enters the competition mat.

13.3 Clothing Requirements for Opening and Closing Ceremonies

All teams must wear their official national/territorial team uniforms at the Opening and Closing Ceremonies.

13.4 Clothing Requirements for Awards Ceremony

Medalists must wear their official national/territorial team uniforms during the Awards Ceremony.

13.5 Compliance Check at Roll-Call Area

Uniforms and weapons checks will be conducted at the Roll-call Area in accordance with stated regulations and requirements. Uniforms and weapons checks are conducted by the Chief Registrar and the Roll-call Officials as stipulated in the rules. Non-compliance may be subject to disqualification from the competition.

14. PLACING AND AWARDS

14.1 Placing

14.1.1 Bare-Hand, Weapon and Duilian Routines, and Intelligent Kungfu Pile

In general, these routine events and the intelligent kungfu pile (*including the single event score*



and the total score) will be placed respectively as follows:

- 1st category prize = 10% of the actual number of participating athletes
- 2nd category prize = 30% of the actual number of participating athletes
- 3rd category prize = 30% of the actual number of participating athletes

If the actual number of participants is 12 or more persons in an individual event, the placing methods are as follows:

- 1st–6th places for top 6 athletes
- 2nd category prize = 30% of the actual number of participating athletes
- 3rd category prize = 30% of the actual number of participating athletes

The 0.1 binary method will be will be implemented.

14.1.2 Jiti Routines

In general, Jiti routines will be placed respectively as follows:

- 1st–6th places for top 6 groups
- 2nd category prize = 30% of the actual number of participating groups
- 3rd category prize = 30% of the actual number of participating groups

The 0.1 binary method will be will be implemented.

14.1.3 Mai Son Jong

In general, each weight category will be placed respectively as follows:

- 1st place
- 2nd place
- 3rd place (juxtaposition with 2 athletes)
- 5th place (juxtaposition with 4 athletes)

14.1.4 Combined Events

In general, the combined events will be placed as follows:

- 1st–8th places for top 8 athletes

14.2 Awards

14.2.1 Bare-Hand, Weapon and Duilian Routines, and Intelligent Kungfu Pile (including Single Event Score and Total Score)



- 1st, 2nd and 3rd category prize athletes in each event will receive medals and certificates respectively.
- **If the actual number of participants is 12 or more persons** in an individual event, the awarding methods are as follows:
 - **Gold, silver, and bronze medals, along with certificates**, will be awarded to the top 3 athletes in each event respectively. Certificates for 4th–6th will be awarded to 4th–6th athletes in each event respectively.
 - 2nd category prize athletes in each event will receive medals and certificates.
 - 3rd category prize athletes in each event will receive medals and certificates.

14.2.2 Jiti Routines

- Top 6 groups in each event will receive the trophies and certificates respectively.
- 2nd category prize athletes in each event will receive medals and certificates.
- 3rd category prize athletes in each event will receive medals and certificates.

14.2.3 Mai Son Jong

- **Gold, silver, and bronze medals, along with certificates**, will be awarded to the athletes ranked 1st, 2nd and 3rd place (juxtaposition with 2 athletes) in each weight category respectively.
- Certificates for 5th places will be awarded to the athletes ranked 5th (juxtaposition with 4 athletes) in each weight category.

14.2.4 Combined Events

- Top 8 athletes will receive the trophies and certificates respectively.

14.3 Participation Certificates

All accredited personnel will receive a IWCC 2025 participation certificate.

Team leaders are required to collect the participation certificates, as well as the award certificates of athletes (if applicable), at the Results and Certificate Office.

15. AWARDS CEREMONY

15.1 Medalists

Medalists must:



- Be escorted by staff to the Waiting Area **10 minutes** before the ceremony to prepare accordingly.
- Attend the Awards Ceremony to receive their medals in person.
- Remove caps, hats, and sunglasses throughout the ceremony.
- Not bring any national, cultural or religious symbols onto the podium.

15.2 Athletes and Team Officials

Athletes and team officials are required to remain in the designated area.

15.3 Medalists Absence

- In case a medalist is unable to attend the ceremony for a valid reason, his/her medal and certificate may be presented to the appointed official of the team.
- Absence without a valid reason will result in the forfeiture of the right to receive a medal.

16. ENTRIES

16.1 Final Entry

Final entry must be submitted through the Online Registration System of the IWCC 2025.

- **2025 IWCC Online Registration System**

URL: <https://wingchun.justtool.com/>

Tel: +86-757-83991970

Tel: +86-757-83991970

Email: wushu@justtool.com

Tech-support: China Cathay Information Technologies Co., Ltd.

All sections of the online entry must be completed in full, including the uploading of the following documents:

- Photos of the participants (white background, head filling 70-80% of the photo, at least 480 pixels in width and 600 pixels in height)
- Passports of the participants (must be valid for at least six months following their final day of travel)

Final entry will open from **June 13, 2025**, and close at **23:59** on **July 5, 2025**.

All payments due to the LOC must be paid in full for registration to be considered as completed.

Each team is required to print a copy of the submitted entry and present it to the LOC upon registration.

16.2 Late Entry and Changes Policy



After the final entry deadline, teams with requests for the late entry or changes must submit a written document for approval and shall pay corresponding fees before the late entry and changes deadline, otherwise request will be denied.

Late entry and changes will open from **July 5, 2025**, and close at **23:59** on **July 17, 2025**.

Any request to change the entry (including late entry) will be handled as follows:

- The late entry is subject to the approval of the IWUF and, if accepted, it will incur a late-entry fee of **USD 50** per participant.
- Replacing a participant is subject to approval by the IWUF and, if accepted, it will incur a replacement fee of **USD 50** per participant.
- If changes are required due to incorrect or missing registration information, those changes are subject to approval by the IWUF and, if accepted, it will incur a fee of **USD 20** per change.

Late Entry	Replacement	Information Change
USD 50	USD 50	USD 20

The above fees must be paid via wire transfer to the LOC before **23:59** on **July 9, 2025**.

17. ARRIVALS AND ACCREDITATION

17.1 Arrivals

All accredited personnel are required to register with the LOC at the designated hotels no later than **23:59** on **July 26, 2025**.

17.2 Accreditation

Accreditation Desk(s) will open at **9:00** on **July 26, 2025**.

Upon arrival at the hotels, team leaders are required to complete the following process:

1	Present each team members' passports
2	Submit Final Entry Form with signature and stamp and confirm the registration information
3	Submit signed Waiver of Liabilities of all participants (Annex 1)
4	Submit valid Medical Certificates (Sample) of all athletes (Annex 2)
5	Submit valid Life Accidental Injury Insurance Certificates of all athletes
6	Pay the relevant participation fees in full (if applicable)
7	Pay the relevant penalty fees in full (if applicable)



(Continued)

8	Submit a bank receipt of payment (either in paper or electronic documents)
9	Sign and confirm all the above items are completed

Accreditation cards will be given to the team leader upon completion of the accreditation process. All personnel must participate in the official activities with their accreditation card during the IWCC 2025.

The competition and training schedules will be announced after accreditation has concluded.

18. WEIGH-IN

Weigh-in for all athletes of intelligent kungfu pile and Mai Son Jong events will take place at **14:00** on **July 27, 2025**. The place for the weigh-in will be announced in due course.

Accreditation cards and passports must be presented at the weigh-in session. An athlete's failure to attend the weigh-in will result in his/her disqualification from the competition.

19. TECHNICAL MEETING

The technical meeting for team managers and coaches will take place at **15:00** on **July 27, 2025**. Each team should send 1–3 representative(s) to attend the meeting.

The technical meeting content will be presented as follows:

- IWUF Event Guidelines (IWUF representatives)
- Event Logistics Information (LOC representatives)
- Event Technical Details (Chair of Jury of Appeals and Chief Referee)
- Other Matters

20. DRAWING OF LOTS

The athlete start order and match sequence for each event and weight category are determined by an electronic drawing of lots carried out by the computer.

21. TECHNICAL OFFICIALS

21.1 International Technical Officials (ITOs)

The Jury of Appeals and all appointed judges serving at the IWCC 2025 will be nominated by the LOC subject to approval of the IWUF.



21.1.1 Uniform

The Jury of Appeals and all appointed judges shall prepare their own black jackets, white shirts, black slacks, and black leather shoes.

21.1.2 Judges' Refresher Course

All IWCC 2025 judges are required to participate in the Judges' Refresher Course. Absence without a valid reason will be forfeiture of the right to officiate at the IWCC 2025.

21.2 National Technical Officials (NTOs)

All NTOs serving at the IWCC 2025 will be nominated by the LOC.

22. APPEALS AND ARBITRATION

22.1 Appeals

Should a team object to the judges' verdict of one of its members for their routine competition events, the respective team leader or team coach may lodge an appeal by submitting it in written form to the Jury of Appeals **within 15 minutes** of the conclusion of the athlete's routine, together with an appeal fee of **USD 100**.

22.2 Arbitration

The Jury of Appeals shall immediately review and make an arbitration conclusion based on the content of the appeal. If the basis of the appeal is ruled legitimate, the result will not be altered, and the appeal fee will be refunded; if the basis for the appeal is ruled illegitimate, the original result will be upheld, and the appeal fee will not be refunded.

The verdict of the Jury of Appeals shall be final. Each team must accept the verdict of the Jury of Appeals as final. If a team is dissatisfied with the ruling and continues to argue unreasonably, such behavior will be dealt with seriously and according to the relevant regulations of the LOC.

23. MISCELLANEOUS

- Athletes who fail to submit the Life Accidental Injury Insurance Certificates to the LOC will not be allowed to participate in the competition.
- The LOC will conduct a random check on the Medical Certificates of the athletes. If there are any problems, these athletes will be disqualified from participating in the competition.
- Should an athlete of Mai Son Jong fail to wear the protective gear will not be allowed to participate in the



competition.

- Should an athlete fail to participate in a competition without a valid reason, all results of the athlete will be canceled.
- Athletes shall arrive at the designated area at:
 - 30 minutes prior to the start of the event (first roll-call)
 - 20 minutes prior to the start of the event (second roll-call)
 - will occur 10 minutes prior to the start of the event (final roll-call)

Failure to be present for roll call will result in forfeit.



III. TEAM INFORMATION

24. ACCOMMODATION

24.1 Hotel Reservation

All accredited personnel are required to stay at the LOC-designated hotels.

- **Check-in Time:** After **15:00**
- **Check-out Time:** Before **14:00**

1.6.1 Non-Compliance Policy

Teams not staying at the LOC-designated hotels due to special reasons shall pay a participation fee of **USD 200** per person. In this case:

- Teams are fully responsible for their own accommodation, meals, and transportation.
- LOC is not liable for any consequences arising therefrom.

1.6.2 Reservation Principles

- Hotel reservations are available on a **first-come, first-served** basis.
- Early reservations are **strongly recommended** due to limited availability.

1.6.3 Meal Arrangements

The LOC will provide meals for all accredited personnel:

- From the evening of their arrival date to the midday on their departure date
- 3 meals daily (breakfast, lunch, and dinner)

1.6.4 Early Arrival and Late Departure Requirements

Participants wishing to arrive or depart outside the scheduled dates must:

- Submit their intended arrival and departure dates during the final registration process.
- Confirm accommodation bookings accordingly, with daily rates applicable.

NOTE: Teams wishing to check in **before 15:00** on **July 26** must book their accommodation starting from **July 25**.

24.2 Room Assignment Rules



24.2.1 Teams with Odd Number of Delegates

Teams with an odd number of delegates (including athletes and team officials) when having reserved double rooms, the LOC will assign the extra delegate to share a double room with a member from another team, if the individual chooses not to pay for a single room.

24.2.2 Team Judges

Team judges reserving double rooms will be paired with other team judges by the LOC.

24.3 Hotel Information

24.3.1 VIP and Judge Hotel

- **Foshan Xiqiao Mountain Hampton by Hilton** (recommended 4-star by Ctrip)

Address: Guanxin Town, 2 Jinhua Avenue, Nanhai District, Foshan City

Telephone: +86-757-86823688

Foshan Xiqiao Mountain Hampton by Hilton is located in Guanxin Town at the foot of the national 5A scenic spot, Xiqiao Mountain (a 5-minute walk to the West Gate of Xiqiao Mountain), adjacent to the Guangdong Eternal Romance Scenic Area. Boasting a prime location, the hotel is within a 20-minute drive of many renowned attractions in Xiqiao, including Sanhu Academy, Tianhu Park, Nanhai Goddess of Mercy Statue, and Huang Feihong Lion Dance and Martial Arts Museum. All guest rooms feature private balconies, and each deluxe lake-view room offers exclusive views of Tingyin Lake.

Positioned as a family-friendly themed resort under the Hampton by Hilton brand, the hotel provides dedicated family floors with "Nature and Cuteness"-themed family rooms and the Heart Lion Outdoor Family Park. Facilities include a 900-square-meter banquet hall, multifunctional meeting rooms, and an open-air bar overlooking the panoramic landscapes of Jinhu Lake, Tingyin Lake, and Xiqiao Mountain. Guanxin Town also offers comprehensive amenities, such as the lakeside Yi Coffee and the Southeast Asian cuisine restaurant Thai Delights.



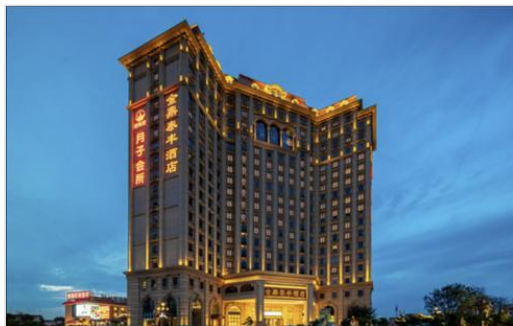
24.3.2 Team Hotels

- **Foshan Jinding Taifeng Hotel (Xiqiao Mountain Branch of Guangdong Eternal Love)** or similar (recommended 5-star by Ctrip)

Address: Intersection of Qiaojin Middle Road and Chongmin West Road, Nanhai District, Foshan City

Telephone: +86-757-8189 3322

Jinding Taifeng Hotel is built to the standards of a super-high-end business hotel. With a 21-storey building, its total construction area reaches 80,000 square meters. The hotel features a unique, innovative, and human - centered intelligent design. Once the check - in procedures are completed at the front desk, it can activate functions such as the air - conditioner in the guest room. It also incorporates an intelligent voice welcome system. The rooms are designed to be comfortable and elegant, and guests in all rooms can enjoy a panoramic view of the beautiful scenery of Xiqiao. An open - style music restaurant, a health - preserving vegetarian restaurant, a modern - style coffee shop, an aerobic leisure and fitness club in the Nanhai area, and a warm and quiet maternity center are all located within the main building of the hotel.



Accreditation Category	Participation Fee Per Person Per Night	
	Single Room Only one person allowed	Double Room Two persons allowed
Athletes, Team Officials and Observer(s)	USD 117	USD 88

- **Foshan Dean Hotel (Xiqiao Mountain Branch of Guangdong Eternal Love)** or similar (recommended 4-star by Ctrip)

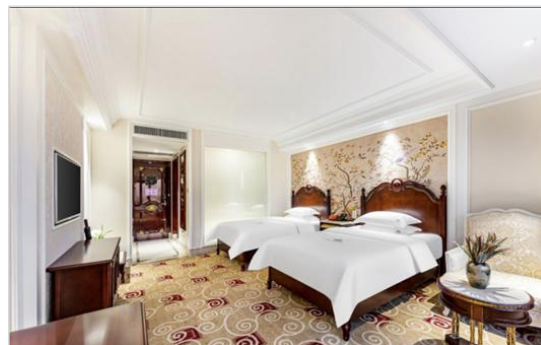
Address: Approximately 100 meters northwest of the intersection of Xiqiao Avenue and



Baiyun Road, Nanhai District, Foshan City

Telephone: +86-757-8689 7888

The hotel is located in the main administrative area of Xiqiao Town, at the foot of Xiqiao Mountain, a national 5A-level scenic spot (it only takes 3 minutes by car to reach the Qiaoyuan entrance of Xiqiao Mountain). It enjoys a superior geographical location. Many famous scenic spots in Xiqiao, such as Sanhu Academy, Tianhu Park, Nanhai Guanyin Statue, and Huang Feihong Lion and Martial Arts Hall, are all within a 20 - minute - drive radius. All rooms in the hotel are equipped with luxurious bay - windows. The hotel is also equipped with a 2000 - square - meter international professional gym, an outdoor heated swimming pool, an open - air bar, and a barbecue party bar that can accommodate 80 people. There is also a 1000 - square - meter banquet hall and multi - function hall, 20 luxurious dining rooms for banquets, a Chinese restaurant that can accommodate 800 people, and an 80 - person coffee bar with an indoor piano. National - treasure - level Italian painters create on - site in the hotel's working spaces, showcasing international artistic taste. Guests can also savor healthy and nutritious cuisine made by Sofitel's dessert masters and famous Shunde chefs, ensuring that your travel, gatherings, team - building activities, and social interactions are all enjoyable and fulfilled.



Accreditation Category	Participation Fee Per Person Per Night	
	Single Room Only one person allowed	Double Room Two persons allowed
Athletes, Team Officials and Observer(s)	USD 92	USD 66

- **Foshan Xiqiao Mountain Hotel (Eternal Love Scenic Area Branch)** or similar (recommended 3-star by ctrip)

Address: Baiyundong Scenic Area, Xiqiao Mountain, Nanhai District, Foshan City



Telephone: +86-757-8680 0888

Foshan Xiqiao Mountain Hotel is located in the Baiyundong Scenic Area of Xiqiao Mountain in Nanhai. It is close to the East Gate of Xiqiao Mountain, at the foot of Xiqiao Mountain National Forest Park, adjacent to Qiaoshan Park and Tingyin Lake. Enjoying a beautiful landscape and a superior geographical location, it serves as a natural negative - ion oxygen bar. The hotel features retro garden - style architecture that sets off the natural scenery. It is a resort hotel integrating exquisite garden - view guest rooms, authentic Shunde cuisine, business conferences, and chess and card entertainment.

The hotel rooms are warm and simple, making guests feel at home. The garden - view rooms and garden - style rooms are equipped with independent balconies, allowing guests to not only enjoy the scenery but also get close to the garden, bringing a pleasant physical and mental experience. Fudu Restaurant has Xiyue Hall, Heshun Hall, and 12 characteristic private rooms named after the towns in Nanhai District. It can provide suitable venues for activities or dining according to guests' needs. In addition, professional chefs carefully prepare authentic Shunde cuisine, triggering a taste-bud feast for you.



Accreditation Category	Participation Fee Per Person Per Night	
	Single Room Only one person allowed	Double Room Two persons allowed
Athletes, Team Officials and Observer(s)	USD 71	USD 56

25. TRANSPORTATION

25.1 Transport Services for Arrivals and Departures

The LOC will arrange a shuttle bus to pick up/drop-off to and from the designated airport. Please notes that the shuttle bus services should be booked in advance with the LOC.



All shuttle bus services need **additional costs** which shall be borne by the participation teams themselves.

If you have any inquiries with the shuttle bus, please reach out to the LOC.

25.2 Shuttle Services

Shuttle buses will operate between the official hotels and the competition and training venues. Schedules will be distributed on arrival.

26. FINANCIAL CONDITIONS

26.1 Teams

- Any international or domestic airfare and related travel expenses, as well as the participation fees of all participants shall be borne by themselves.
- The participation fees include accommodation, meals, local transportation, entry (excluding the late entry and changes fees) and certificate, etc.

26.2 Technical Officials

Transportation expenses, accommodation, and meals shall be provided for the Jury of Appeals and all judges by the LOC.

26.3 Additional Costs

Participants arriving early or departing late may be subject to additional costs related thereto which shall be borne by the participants themselves.

26.4 Payment Methods

- All teams are required to complete full payment in advance to the LOC by **23:59 on July 5, 2025** through international wire transfer. Until complete payment is received, hotel rooms will not be reserved, and accreditation will not be issued.
- Teams that are unable to pay through international remittance due to government policies and restrictions should communicate with the LOC in advance to make arrangements, otherwise accreditation will not be issued.
- All international wire transfer and bank fees are to be paid by the teams transferring the funds themselves.
- Proof of full payment should be sent to the LOC by email and brought along to the LOC by the team leader. The LOC requires that all participation fees are to be paid in advance in order to secure



accommodation as required by the official hotels. The LOC will be unable to guarantee a team's required accommodation without pre-payment in full. Teams are requested to be mindful of this when submitting their final entry.

The bank information of the LOC:

Bank Name	Industrial Bank Co., Ltd. Foshan Branch Business Department
Account Name	Foshan Pearl River Media Zhizheng Culture Co., Ltd.
Account Number	392000100100649327
Bank Address	News Centre, Foshan New Town, Shunde District, Foshan, China

27. RESPONSIBILITY OF MEMBER FEDERATIONS

The Member Federations (NFs) are responsible for their officials, coaches, athletes, and observers adhering to the IWUF and to all relevant rules established by the IWUF and the LOC. The NFs should ensure that their participants hold themselves to the highest standards in all their actions during the event.

27.1 Fundamental Principles

All NFs' members participating in the IWCC 2025 must observe and respect the IWUF constitution, rules, regulations, and representatives. Individuals deemed to have acted against the IWUF, its principles, interests or purpose may be subject to suspension or expulsion from the event and/or cancellation of their accreditation.

27.2 Attitude of Athletes and Coaches

Athletes will compete under the responsibility of their NFs. The NFs are fully responsible regarding the general attitude and comportment of their athletes. Coaches should respect the judging panel and all complaints must be conducted in accordance with competition procedures. Athletes and Coaches should comply with the IWUF Code of Ethics. Any act against the IWUF judging panel may be subject to suspension or expulsion from the event and/or cancellation of their accreditation and/or competition results.

27.3 Image of Athletes

Each NF is responsible for obtaining the rights for the IWUF to use its athletes' images at the discretion of the IWUF for promotional purposes in all forms.

28. INSURANCE



Each NF is fully and sole responsible for insuring its athletes against injury and third-party risk (public liability) during the period of the IWCC 2025. The IWUF and the LOC are not responsible in part or in whole of the said liability.

29. PASSPORT AND VISA REQUIREMENTS

All participants must hold a valid passport and should allow plenty of time for visa application and processing.

To ensure as few complications during visa application and travel as possible, it is suggested that all participants' passports are valid for at least **6 months** following their final day of travel.

If you need any assistance on visa issues, please contact the LOC's email.

NOTE: We **strongly recommend** teams that need to apply for visas do so **as early as possible**.

30. ANNEX

Annex 1: Wavier of Liabilities

Annex 2: Medical Certificate (Sample)

Annex 3: IWUF Brand Control Guidelines for Wushu Competition Uniforms (excerpt)



Annex 1

**International Wing Chun Competition 2025
Waiver of Liabilities**

Federation				Color ID Photo
Name of Participant				
Date of Birth		Gender		
Nationality		Passport No.		
Role of Participant				
*Athlete *Team Manager *Coach *Doctor *Observer				

I, the undersigned, knowingly and without duress, do voluntarily submit my Entry to the International Wing Chun Competition (IWCC) 2025. The International Wing Chun Competition 2025 is co-hosted by the International Wushu Federation (IWUF) and the Chinese Wushu Association and organized by the Foshan Nanhai District Bureau of Culture, Radio, Television, Tourism and Sports and the Foshan Nanhai District Xiqiao Town People’s Government, hereinafter the Foshan Nanhai District Bureau of Culture, Radio, Television, Tourism and Sports and the Foshan Nanhai District Xiqiao Town People’s Government are referred as “Organizing Committee”. I understand and acknowledge that the participation in the International Wing Chun Competition 2025 involves inherent risk of losses, damages or injuries, including but not limited to risks deriving from participating in the competition and trainings, in the use of the sporting facilities or equipment and/or risks arising from actions or omissions of other participants or other third parties. I further understand that my participation in the International Wing Chun Competition 2025 is subject to my agreement and acceptance of this Waiver of Liabilities (“Waiver”). In consideration of the IWUF and the Organizing Committee accepting my application, I hereby assume all risk of physical and mental injuries, disabilities and losses which may result from or in connection with my participation in the International Wing Chun Competition 2025. Acting for myself, heirs, personal officers, agents, representatives and assignees, I do hereby release, to the extent permissible, the IWUF and the Organizing Committee including all associates, auxiliaries and affiliates, such as but not limited to their officers, agents, employees, representatives, volunteers, judges and referees and other related members from all claims, actions, suits, and controversies related to any loss, damage or injury by reason of any matter, cause or thing whatsoever that I may sustain as a result of or in connection with my participation in the International Wing Chun Competition 2025. I fully understand and acknowledge that it is my sole responsibility to determine whether I am fit and healthy enough to participate in any events without posing a risk to myself or others. I hereby certify that, to the best of my knowledge, this is the case. I understand to have a duty to inspect the state of the used sporting facilities and equipment, and I waive any claim arising out of any respective defect. I fully understand that all medical attention or treatment afforded to me by the IWUF and the Organizing Committee including all associates, auxiliaries and affiliates, e.g. their officers, medical personnel, representatives, employees, volunteers, and all other related members, will be of the first aid type only, and I hereby consent to receiving such treatment and release the IWUF and the Organizing Committee as well as their officers,



representatives, volunteers, employees and all other related members from any liability for such aid. I understand it is my personal obligation to obtain my own

medical coverage. I am fully and solely responsible for adequately insuring myself against injury and third-party risk (public liability), with such insurance to cover the period before, during and after the event. The IWUF and the Organizing Committee including all associates are not responsible in part or in whole for any damages or medical or hospital expenses incurred as a result of participation in the International Wing Chun Competition 2025.

I agree to abide by and follow the Rules established by the IWUF and the Organizing Committee and follow all received instructions. I acknowledge and agree that it is my personal responsibility to be informed about all afore-mentioned Rules and instructions. I agree that I will conduct myself in a professional and courteous manner at all times and to be subject to penalties and sanctions for violations related thereto, pursuant to the IWUF Constitution and the IWUF Ethics Code as updated from time to time and other Rules established by the IWUF and the Organizing Committee. I understand that any dispute must be resolved in accordance with the IWUF Constitution and any further applicable IWUF Rules. I agree that my performance, attendance, and participation at the International Wing Chun Competition 2025 may be photographed, filmed or otherwise recorded or released or telecast live. I consent to allow the IWUF and the Organizing Committee use of my name, likeness, address, voices, poses, pictures, videos, live or non-live coverage and biographical and biological data concerning full or parts, in any form or language ("Identity, Voice and Image Data"), with or without other material, throughout the world, without limitation, for television, radio, video, theatrical medium picture, or any other medium and any other purpose by IWUF or the Organizing Committee through any devices now known or hereafter devised and I do hereby waive any compensation in regard thereof as well as any future rights to the aforementioned. I also consent to the collecting, processing and use of all above-mentioned Identity, Voice and Image Data by the IWUF and the Organizing Committee for commercial and promotional services of sponsors and media partners as well as, where necessary, by third parties for the purpose of facilitating my participation an accreditation in the event (e.g. law enforcement authorities, border services agencies etc.).

Furthermore, while I note that the IWUF and the Organizing Committee will take into consideration my needs to rest, train and prepare for the events, I agree to be reasonably available during the Events for TV/digital/radio interviews, promotional or press photo sessions and press conferences at the dedicated areas.

If any provision of this Waiver is deemed to be invalid or unenforceable, the remaining provisions shall remain in full force and effect. This Waiver shall be governed by the IWUF Constitution, the further applicable Rules established by the IWUF and the Organizing Committee and, subsidiarily, by Swiss law.

I have read and fully understand the waiver listed above.

****For athletes under the age of 18 -This waiver must be signed by their parent or legal guardian****

Signature of Participant	Signature of Parent/Legal Guardian	Name of Parent/Legal Guardian
(If participant is under 18 years of age)		



Date	Date	Date
------	------	------

Annex 2

International Wing Chun Competition 2025 Medical Certificate (Sample)

1. ATHLETE INFORMATION

Surname				Color ID Photo
Given Name(s)				
Country		Postal Code		
Passport No.		Telephone No.		
Email				
Address				

2. QUESTIONS FOR ATHELETE (Attach relevant documents if you answered 'yes' to any of the following)

Is a doctor currently treating you?	
Have you ever been unconscious or had a concussion?	
Have you been hit hard in the head in the last 6 months?	
Have you had any headache in the last 2 weeks?	
Do you have any problems with bleeding?	
Do any diseases run in your family?	
Have you had any surgery?	
Have you ever had to stay in a hospital?	
Do you have any medical condition?	
Do you have a history of seasonal or drug allergies?	
Is there a history of sudden death under 45 years old in the family?	

3. MEDICAL DOCTOR INFORMATION

Surname	
---------	--



Given Name(s)	
Telephone No.	
Address	

4. MEDICAL EXAMINATION

Item				Abnormalities
Head	Cranial nerves, eyes, pupil size and reactivity. Fundi. Vision by chart.	Normal	Abnormal	
	Mouth, teeth, throat	Normal	Abnormal	
	Ears	Normal	Abnormal	
	Temporomandibular joint	Normal	Abnormal	
	Brain Examination: electroencephalogram (EEG) Test (Sanda athletes only)	Normal	Abnormal	
Neck	Cervical spine, lymph nodes	Normal	Abnormal	
Chest	Breath sounds, rib, tenderness on compression	Normal	Abnormal	
Neurological System	Reflexes	Normal	Abnormal	
	Verbal responses	Normal	Abnormal	
	Motor responses and balance	Normal	Abnormal	
Cardiovascular System	Heart rate	Normal	Abnormal	
	Blood pressure	Normal	Abnormal	
	Heart examination: electrocardiogram (ECG) Test	Normal	Abnormal	
Medications Used	Name and dosage	Yes	No	

5. DOCTOR CONFIRMATION

I confirm that the Athlete is <input type="checkbox"/> fit / <input type="checkbox"/> not fit to participate in the competition.	Signature:
	Place/Date:

6. NATIONAL FEDERATION CONFIRMATION

I confirm that the above information provided is true and correct.

National Federation	
Name of Representative	



Title of Representative	
Signature:	Date:

Annex 3

International Wushu Federation (IWUF) Brand Control Guidelines for Wushu Competition Uniforms (excerpt)

1. PURPOSE

To ensure sponsor and manufacture rights by establishing a standard for brand placement on uniforms and other clothing items used during IWUF wushu competition.

2. STANDARDS AND GUIDELINES

Uniforms of athletes, coaches and team officials

3. GENERAL REQUIREMENTS

The manufacturer logo may appear once on each piece of clothing, with an area of up to 20 cm². Note that only the quantity and size of logos appearing on uniforms will be assessed during the competition, and logos will not be reviewed for accuracy or adherence to brand standards.

The manufacturer logo may appear once on each accessory item (paired accessories are considered as two items), with an area of up to 6 cm².

A manufacturer logo may appear once on each shoe or foot item (paired shoes or foot items are considered as two items), with an area of up to 6 cm².

A national/regional Olympic Committee flag, a national/regional wushu federation flag/logo may each appear once where specified, with an area of up to 20 cm² each.

3.1 WUSHU TAOLU COMPETITION UNIFORM REQUIREMENTS

- **Top/Jacket**

- **Front**

- No advertisements or logos may appear on the collar.



A flag may appear on the left chest area, with an area of up to 20 cm².

The manufacturer logo may appear on the right chest area, with an area of up to 20 cm².

No advertisements may appear in other areas.

- **Back**

Sponsor or other logos may be displayed in other areas. The total number of sponsor or other logos may not exceed three (3), with a maximum area of 20 cm² each.

- **Pants/Trousers**

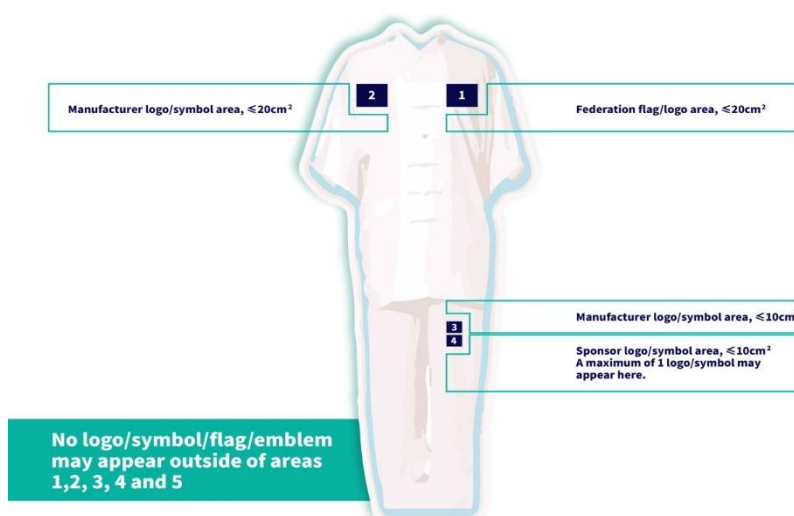
- **Left leg**

The manufacturer logo may be arranged on the top, with an area of up to 10 cm².

Sponsor logos may appear below the manufacturer's logo but may not appear within 5 cm of the manufacturer's logo, with an area of up to 10 cm².

- **Right leg**

No logo, flag, or other emblem may appear.





5 5 5

Sponsor logo/symbol area,
each logo/symbol must be $\leq 20\text{cm}^2$.
A maximum of 3 logo/symbol
may appear here.

No logo/symbol/flag/emblem
may appear outside of areas
1,2, 3, 4 and 5

WU C S

IWUF APP



- RECOGNIZED BY / IN PARTNERSHIP WITH -

International Federation
recognised by the



International
Olympic
Committee



INTERNATIONAL SCHOOL SPORT FEDERATION



- OFFICIAL SOCIAL MEDIA PLATFORMS -



- IWUF APP -



- IWUF GLOBAL PARTNER -

恒源祥®

- IWUF GLOBAL SUPPLIER -

