



11th  
Sanda World Cup

---

**REGULATIONS**

🕒 May 11 -16, 2026

📍 Macao, China

International Federation  
recognised by the



International  
Olympic  
Committee

**Version 1, issued on January 16, 2026 by IWUF**

© International Wushu Federation

Lausanne Office: Avenue de Rhodanie 58, 1007 Lausanne, Switzerland

Beijing Office: 9 Huaweili, Chaoyang District, 100021 Beijing, China

[www.iwuf.org](http://www.iwuf.org)



# CONTENTS

## I. GENERAL INFORMATION

- 1. INTRODUCTION ..... 1
  - 1.1 Host Country Overview ..... 1
    - 1.1.1 Geography ..... 1
    - 1.1.2 Climate ..... 1
    - 1.1.3 Population, Ethnicity and Language ..... 1
    - 1.1.4 Religion ..... 2
    - 1.1.5 Others ..... 2
  - 1.2 Host City Overview ..... 2
  - 1.3 International Airport ..... 3
  - 1.4 Weather ..... 4
  - 1.5 Electricity ..... 4
  - 1.6 Telephone ..... 4
- 2. INTRODUCTION TO IWUF SANDA WORLD CUP ..... 4
- 3. DATES AND PLACE ..... 4
  - 3.1 Competition Date ..... 4
  - 3.2 Important Dates ..... 4
    - 3.2.1 Final Entry ..... 4
    - 3.2.2 Late Entry and Changes ..... 4
- 4. VENUES ..... 5
  - 4.1 Competition Venue ..... 5
  - 4.2 Training Venue ..... 5
- 5. GENERAL PROGRAM ..... 5
- 6. KEY CONTACTS ..... 6

## II. TECHNICAL INFORMATION

- 7. COMPETITION EVENTS ..... 7
  - 7.1 Men’s Events ..... 7
  - 7.2 Women’s Events ..... 7
- 8. QUALIFICATIONS ..... 7
  - 8.1 Membership ..... 7



8.2 Athlete Eligibility.....	7
8.3 Age Requirement.....	7
9. PARTICIPATION METHODS.....	7
9.1 Quota.....	7
9.1.1 Athlete.....	7
9.1.2 Team official.....	8
9.1.3 Observer.....	8
9.2 Participation Event.....	8
9.3 Relevant Documents.....	8
10. COMPETITION RULES.....	8
11. COMPETITION METHODS.....	8
11.1 Competition Format.....	8
11.2 Daily Weigh-in.....	8
12. COSTUMES AND EQUIPMENT.....	9
12.1 Compliance Requirement of Marketing and Advertising.....	9
12.2 Uniforms and Equipment Requirements for Competition.....	9
12.3 Clothing Requirements for Opening and Closing Ceremonies.....	9
12.4 Clothing Requirements for Awards Ceremony.....	9
12.5 Compliance Check at Roll-Call Area.....	9
13. PLACING AND AWARDS.....	9
14. AWARDS CEREMONY.....	10
14.1 Medalists.....	10
14.2 Athletes and Team Officials.....	10
14.3 Special Cases.....	10
14.3.1 Medalist Absence.....	10
14.3.2 Insufficient Participants.....	10
15. ENTRIES.....	10
15.1 Final Entry.....	11
15.1.1 Open and Close Dates.....	11
15.1.2 Uploading Documents.....	11
15.1.3 Requirements for Registration.....	11
15.2 Late Entry and Changes Policy.....	11
15.2.1 Open and Close Dates.....	11
15.2.2 Relevant Fees and Requirements.....	12
16. ARRIVALS AND ACCREDITATION.....	12
16.1 Arrivals.....	12



16.2 Accreditation .....	12
17. WEIGH-IN .....	13
18. TECHNICAL MEETING .....	13
19. DRAWING OF LOTS .....	13
20. TECHNICAL OFFICIALS .....	14
20.1 International Technical Officials (ITOs) .....	14
20.1.1 Registration .....	14
20.1.2 Uniforms .....	14
20.1.3 Judges' Refresher Course .....	14
20.2 National Technical Officials (NTOs) .....	14
21. SUPERVISORY COMMISSION .....	14

### **III. TEAM INFORMATION**

22. ACCOMMODATION .....	16
22.1 Hotel Reservation .....	16
22.1.1 Non-Compliance Policy .....	16
22.1.2 Reservation Principles .....	16
22.1.3 Meal Arrangements .....	16
22.1.4 Early Arrival and Late Departure Requirements .....	16
22.2 Room Assignment Rules .....	17
22.3 Hotels Information .....	17
22.3.1 VIP Hotel & Judge Hotel .....	17
22.3.2 Team Hotel .....	18
23. TRANSPORTATION .....	18
23.1 Transport Services for Arrivals and Departures .....	19
23.2 Shuttle Services .....	19
24. FINANCIAL CONDITIONS .....	19
24.1 Teams .....	19
24.2 Technical Officials .....	19
24.3 Additional Costs .....	19
24.4 Payment Methods .....	19
25. DOPING CONTROL .....	20
26. RESPONSIBILITY OF MEMBER FEDERATIONS .....	20
26.1 Fundamental Principles .....	21



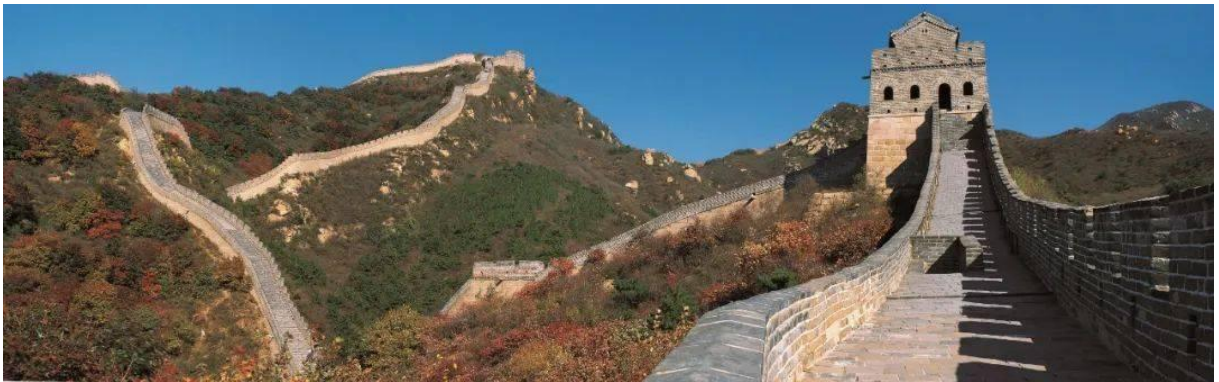
26.2 Attitude of Athletes and Coaches .....	21
26.3 Image of Athletes .....	21
27. INSURANCE .....	21
28. PASSPORT AND VISA REQUIREMENTS .....	21
29. ANNEX .....	21
Annex 1 .....	23
Annex 2 .....	28
Annex 3 .....	30
Annex 4 .....	32

## I. GENERAL INFORMATION

### 1. INTRODUCTION

#### 1.1 Host Country Overview

China, one of the world's most ancient civilizations, has a history dating back over 5,000 years. This has led to the country having an extraordinarily rich cultural heritage. As the world's largest developing country, China has seen remarkable progress in its economic and social development. Today's China is politically and socially stable, and economically prosperous, with its people's lives getting better each day.



##### 1.1.1 Geography

China is located on the east side of Asia and the west edge of the Pacific Ocean. Covering a land area of about 9.6 million square kilometers, it features over 18,000 kilometers of continental coastline along its eastern and southern edges, and approximately 4.7 million square kilometers of inland and border seas. There are more than 7,600 islands of varying sizes in the sea area, among which the island of Taiwan, with an area of 35,798 square kilometers, is the largest.

##### 1.1.2 Climate

Given its sheer size, it is perhaps not surprising that China has a range of climates. Most of the country lies in northern temperate zone that features a mild, continental monsoon climate and four distinct seasons.

##### 1.1.3 Population, Ethnicity and Language

Population: 1,411.78 million.

Ethnicity: China is a multi-ethnic country with 56 ethnic groups in total.

Language: There are more than 80 local languages and about 30 Chinese writing systems. Mandarin (also known as Putonghua) is the country's national language.

### 1.1.4 Religion

Religion: China is a multi-religious country. The main religions are Buddhism, Taoism, Islam, Catholicism and Christianity. Chinese citizens enjoy freedom of religious belief.

### 1.1.5 Others

China shares borders with 14 countries and is adjacent to eight countries by sea. The capital city is Beijing. China is comprised of provincial-level administrative divisions that can be further classified into: 4 municipalities directly under the central government, 23 provinces, 5 autonomous regions and 2 Special Administrative Regions.

Currency: The legal currency is renminbi (RMB), with yuan as the basic unit, and jiao and fen as fractions of this basic unit. One yuan is equal to 10 jiao and one jiao equal to 10 fen. Foreign currency can be freely exchanged in most hotels and banks on the Chinese mainland.

## 1.2 Host City Overview

The Macao Special Administrative Region (MSAR) is an integral part of the People's Republic of China. Situated at the mouth of the Pearl River Delta (PRD) and bordering on Guangdong Province, Macao is 60 kilometers from Hong Kong.

Boasting a brilliant and fascinating history encompassing 400 years of cultural exchange between China and the West, Macao has a unique appeal to tourists. Its scenery is embellished with tourist treasures of all types, including picturesque dwellings constructed in traditional styles and ancient temples built during the Ming and Qing dynasties, buildings with Southern European architectural features, baroque style churches and impressive contemporary structures.



The population of Macao is estimated to be 688,300. Chinese and Portuguese are the official languages of Macao, and more than 81 percent of the population speak Cantonese.

### 1.3 International Airport

**Macao International Airport** (IATA: MFM, ICAO: VMMC) commenced operation in November 1995. Since then, it has rapidly established itself as a vital link between the Pearl River Delta, the fastest growing economic region in the world. Macao's hinterland is Zhuhai, one of China's Special Economic Zones, and a regional manufacturing powerhouse. With well-established and efficient direct land and sea links to neighbouring regions, Macao International Airport is ideally positioned as a hub for freight and express cargo in the Asia-Pacific.

Macao International Airport is a fully functional 24-hour airport. An 11,000-foot ILS CAT II equipped runway, constructed in strict accordance with ICAO standards, is capable of handling long haul flights. Phase one of the airport is equipped with a full range of passenger and cargo facilities designed to handle six million passengers and 165,000 metric tons of freight a year.



#### **1.4 Weather**

Historical average temperatures for Macao in May range from 25°C–30°C.

#### **1.5 Electricity**

The electricity standard in Macao is 220V (50Hz).

#### **1.6 Telephone**

To call Macao from abroad, dial +853 (country code) followed by the local number.

### **2. INTRODUCTION TO IWUF SANDA WORLD CUP**

Hosted by the International Wushu Federation (IWUF), IWUF Sanda World Cup (SWC) is one of the official events of the IWUF. This prestigious competition typically occurs biennially, showcasing the top sanda athletes from the most recent World Wushu Championships (WWC).

With the first edition of IWUF SWC taking place in 2002, ten editions have been held since then. The Wushu General Association of Macao is responsible for the organization of IWUF SWC 2026 (11th edition) under the auspices of the IWUF.

For more information on IWUF SWC 2026, please visit the IWUF official website <http://www.iwuf.org>, also visit the official social media, Facebook, Instagram (IG), YouTube.

### **3. DATES AND PLACE**

*(all the following dates and times in Macao Time)*

IWUF SWC 2026 will be held **from May 11 to May 16, 2026, in Macao, China.**

#### **3.1 Competition Date**

From May 13 to 15, 2026

#### **3.2 Important Dates**

##### **3.2.1 Final Entry**

From March 5 to April 3, 2026

##### **3.2.2 Late Entry and Changes**

*(upon acceptance by IWUF)*

From April 4 to April 17, 2026

## 4. VENUES

The Tap Seac Multisport Pavilion is a modern multipurpose indoor sports arena located in the heart of Macao. It integrates contemporary sporting functionality with a practical architectural design. This pavilion is used for hosting various sports competitions, cultural performances, and large-scale public events. It has been in operation since November 16, 2004. The Tap Seac Multisport Pavilion is located in the Tap Seac Area, Santo António Parish, Macao Peninsula. It covers a total area of 5,539 square meters, with the main competition arena offering a seating capacity of 3,295 spectators. The pavilion has a strong history of hosting prestigious international sporting events. It was a key venue for the 2005 East Asian Games and the 2006 Lusofonia Games, demonstrating its capability and experience in organizing high-level international competitions.

### 4.1 Competition Venue

Tap Seac Multisport Pavilion Main Arena

### 4.2 Training Venue

Tap Seac Multisport Pavilion Secondary Arena



## 5. GENERAL PROGRAM

Date	Time	Activity	Location
May 11 (Mon)	Whole Day	Judges Arrivals and Registration	Judges & Teams Hotel
		Teams Arrivals and Registration	
May 12 (Tue)	06:30–08:00	Weigh-in	Harbourview Hotel Macau
	10:00–12:00	Technical Meeting and Drawing of Lots	Hotel Royal Macao
	Whole Day	Team Training	Tap Seac Multisport Pavilion Secondary Arena
		Judges' Refresher Course & Rehearsal	Tap Seac Multisport Pavilion Main Arena
TBD	Opening Ceremony and Welcome Dinner	TBD	
May 13 (Wed)	06:30–07:30	Weigh-in	Harbourview Hotel Macau

	Whole Day	Competition	Tap Seac Multisport Pavilion Main Arena
May 14 (Thur)	06:30–07:30	Weigh-in	Harbourview Hotel Macau
	Whole Day	Competition	Tap Seac Multisport Pavilion Main Arena
May 15 (Fri)	06:30–07:30	Weigh-in	Harbourview Hotel Macau
	Whole Day	Competition and Awards Ceremony	Tap Seac Multisport Pavilion Main Arena
May 16 (Sat)	Before 11:00	Departures	

**NOTES:** This program is subject to change depending on the number of registered athletes.

## 6. KEY CONTACTS

- ***IWUF Secretariat***

Tel: +86-10-87774492

Email: events@iwuf.org

- ***Organizing Committee of IWUF SWC 2026***

*(hereinafter referred to as "Local Organizing Committee", abbreviated as "LOC")*

Tel: +853-2856-7873

Email: macauwushu@gmail.com

## II. TECHNICAL INFORMATION

### 7. COMPETITION EVENTS

#### 7.1 Men's Events

48kg, 52kg, 56kg, 60kg, 65kg, 70kg, 75kg, 80kg, 85kg, 90kg, 100kg, and 100kg+

#### 7.2 Women's Events

48kg, 52kg, 56kg, 60kg, 65kg, 70kg, and 75kg

### 8. QUALIFICATIONS

#### 8.1 Membership

Only those federations/associations which have paid their IWUF annual membership fees for 2025 and 2026 will be permitted to participate in IWUF SWC 2026.

Hereinafter the IWUF member federation is referred to as "NF".

#### 8.2 Athlete Eligibility

- **The top 3 athletes** (the 3<sup>rd</sup> place juxtaposition) of each Sanda event from **the 17<sup>th</sup> WWC** have qualified for IWUF SWC 2026. All qualified athletes are listed in Annex 1.
- Those athletes that have qualified but do not compete in the IWUF SWC 2026 will be replaced by the athletes appointed by the IWUF.
- Each qualified athlete must be submitted into IWUF SWC 2026 by their NF.

#### 8.3 Age Requirement

All athletes who must be **40 years old and under**, i.e. born in 1986 and after, can participate in IWUF SWC 2026.

### 9. PARTICIPATION METHODS

Each NF can enter at most **1 team**.

#### 9.1 Quota

##### 9.1.1 Athlete

Each team can have no more than **8 athletes**.

### 9.1.2 Team official

- Teams that have **1 – 3 qualified athlete(s)** may submit **2 team officials** at most.
- Teams that have **4 – 6 qualified athletes** may submit **3 team officials** at most.
- Teams that have **7 – 8 qualified athletes** may submit **4 team officials** at most.

### 9.1.3 Observer

Extra team delegate(s) exceeding the quota shall be registered as observer(s).

## 9.2 Participation Event

Each qualified athlete may only participate within the events he/she has qualified for.

## 9.3 Relevant Documents

Upon arrival at the Accreditation Desk, team leaders must submit the following documents:

- Completed and signed **Waiver of Liabilities** (Annex 2) of all participants.
- **Medical Certificates** (Annex 3) of all athletes issued by a qualified medical doctor from a check-up performed within a period of **15 days** prior to the registration date of the competition.
- **Life Accidental Injury Insurance Certificates** of all athletes.

## 10. COMPETITION RULES

Unless otherwise stated within these regulations, the competition will be conducted in accordance with **the IWUF Wushu Sanda Competition Rules and Judging Methods 2024** (hereinafter referred to as “rules”).

The rules may be interpreted solely at the discretion of the IWUF. In case of any disagreement in the interpretation of the rules, the English version shall prevail.

## 11. COMPETITION METHODS

### 11.1 Competition Format

- The competition will utilize the single-knockout system.
- If the number of athletes in a given weight category is 3, a single round-robin competition system will be adopted.
- The duration of each round shall be 2 minutes with a 1-minute rest in between.

### 11.2 Daily Weigh-in

- Following arrival and accreditation, athletes will undergo an initial weigh-in and drawing-lots as

stipulated in the schedule.

- Athletes that are competing on a specific day of competition are required to weigh-in at the specific time and place prior to the start of the day's event.

## **12. COSTUMES AND EQUIPMENT**

### **12.1 Compliance Requirement of Marketing and Advertising**

All teams must follow the IWUF Brand Control Guidelines for Wushu Competition Uniforms (excerpt) (Annex 4).

### **12.2 Uniforms and Equipment Requirements for Competition**

Athletes shall wear costumes and protective gears in compliance with the rules to participate in the competition.

- Each athlete must provide 2 sets of competition uniforms: 1 set in red and 1 set in blue.
- Each athlete must provide their own gum guard, groin cups, and hand wraps. Otherwise, participation in the competition will not be permitted.
- Gloves, headgear and chest protector manufactured by the IWUF's certified supplier(s) will be provided by the LOC.
- ***Men's athletes will not wear head gears and chest protectors.***

### **12.3 Clothing Requirements for Opening and Closing Ceremonies**

All teams must wear their official national/territorial team uniforms at the Opening and Closing Ceremonies.

### **12.4 Clothing Requirements for Awards Ceremony**

Medalists are expected to attend the Awards Ceremony in their national/territorial team uniforms.

### **12.5 Compliance Check at Roll-Call Area**

Uniforms and equipment checks will be conducted at the Roll-call Area in accordance with stated regulations and requirements. Uniforms and equipment checks are conducted by the Chief Registrar and the Roll-call Officials as stipulated in the rules. Non-compliance may be subject to disqualification from the competition.

## **13. PLACING AND AWARDS**

- **1<sup>st</sup> place:** Gold Medal and Certificate, CNY 10,000 prize money
- **2<sup>nd</sup> place:** Silver Medal and Certificate, CNY 6,000 prize money
- **3<sup>rd</sup> place:** Bronze Medal and Certificate, CNY 3,000 prize money

**NOTES:** Prize money may be awarded in USD, in which case the conversion rate utilized will be based on the mid-market exchange rate.

All accredited personnel, including team officials, observers and athletes, will receive a IWUF SWC 2026 participation certificate. Team leaders are required to collect the participation certificates for their team from the LOC at the Results and Certificates Office.

## 14. AWARDS CEREMONY

### 14.1 Medalists

Medalists must:

- Attend the Awards Ceremony to receive their medals **in person**.
- Be escorted by staff to the Waiting Area **10 minutes** before the ceremony to prepare accordingly.
- Not bring any national/territorial, cultural or religious symbols onto the podium.
- Remove caps, hats, and sunglasses throughout the Awards Ceremony.
- Face the flags during they are being raised.

### 14.2 Athletes and Team Officials

Athletes and team officials are required to remain in the designated area.

### 14.3 Special Cases

#### 14.3.1 Medalist Absence

- In case a medalist is unable to attend the ceremony for a valid reason, his/her medal and certificate may be presented to the appointed official of the team.
- Absence without a valid reason will result in forfeiture of the right to receive a medal.

#### 14.3.2 Insufficient Participants

***If there are fewer than 3 medalists in a single event, no Award Ceremony will be held for that event.*** The team leader will receive the medals and certificates at the Results and Certificates Office.

## 15. ENTRIES

All online entries must be submitted through **the IWUF Online Registration System**.

- **IWUF Online Registration System**

URL: <https://registration.iwuf.org>

Contact person: HUANG Xilong

Tel: +86-19952270889

Email: [Service@jyywty.com](mailto:Service@jyywty.com)

Tech-support: Jiangyin Yunwu Shiwu Sports Technology Co., Ltd

## 15.1 Final Entry

### 15.1.1 Open and Close Dates

- **Open: March 5, 2026**
- **Close: April 3, 2026, at 23:59**

### 15.1.2 Uploading Documents

- **Photos** of the participants (white background, head filling 70–80% of the photo, at least 480 pixels in width and 600 pixels in height)
- **Passports** of the participants (must be valid for **at least 6 months** following their final day of travel)

### 15.1.3 Requirements for Registration

- All sections of the online entry must be completed **in full**.
- All payments due to the LOC must be paid in full for registration to be considered as completed.
- Each team is required to print a copy of the submitted entry and present it to the LOC upon registration.

## 15.2 Late Entry and Changes Policy

After the final entry deadline, teams with requests for the late entries or changes must submit a written document for approval and shall pay corresponding fees before the late entry and changes deadline, otherwise the request will be denied.

### 15.2.1 Open and Close Dates

- **Open: April 4, 2026**
- **Close: April 17, 2026, at 23:59**

### 15.2.2 Relevant Fees and Requirements

- Any request to change the entry (including the late entry) will be handled as follows:
  - The late entry is subject to the approval of the IWUF and, if accepted, it will incur a late-entry fee of **USD 100** per participant.
  - Replacing a participant is subject to approval by the IWUF and, if accepted, it will incur a replacement fee of **USD 100** per participant.
  - If changes are required due to incorrect or missing registration information, those changes are subject to approval by the IWUF and, if accepted, it will incur a fee of **USD 50** per change.

Late Entry	Replacement	Information Change
USD 100	USD 100	USD 50

- The above fees must be paid via wire transfer to the IWUF **before 23:59 on April 17, 2026**.

## 16. ARRIVALS AND ACCREDITATION

### 16.1 Arrivals

The following accredited personnel are required to register with the LOC at the LOC-designated hotels no later than:

- **Judges: May 11, 2026, at 23:59**
- **Athletes and team officials: May 11, 2026, at 23:59**

### 16.2 Accreditation

Accreditation Desks will open **on May 11, 2026, at 9:00**.

Upon arrival at the Accreditation Desk, the team leader is required to complete the following process:

1	Present each team members' passports
2	Submit Final Entry Form with signature and stamp and confirm the registration information
3	Submit 3 national flags (size: 1m*2m)
4	Submit national anthem (short version) in MP3 format on a CD or USB flash drive
5	Submit signed Waiver of Liabilities of all participants (Annex 3)
6	Submit valid Medical Certificates (Sample) of all athletes (Annex 4)
7	Submit valid Life Accidental Injury Insurance Certificates of all athletes

8	Pay the relevant participation fees in full (if applicable)
9	Pay the relevant penalty fees in full (if applicable)
10	Submit a bank receipt of payment (either in paper or electronic documents)
11	Sign and confirm all the above items are completed

Accreditation cards will be given to the team leader upon completion of the accreditation process. All personnel must participate in the official activities with their accreditation card during IWUF SWC 2026.

The competition and training schedules will be distributed after accreditation has concluded.

## 17. WEIGH-IN

The first official weigh-in for all athletes will take place **on May 12, 2026, at 06:30**. Furthermore, the weigh-in will be conducted on daily basis **at 06:30**, athletes must attend a weigh-in on each day they participate in competition (specific places for each weigh-in will be announced accordingly).

- **Accreditation cards and passports** must be presented at each weigh-in session.
- A sanda athlete's failure to attend any required weigh-in will result in his/her disqualification from the competition.

## 18. TECHNICAL MEETING

The technical meeting for team managers and coaches will take place **on May 12, 2026, at 10:00**. Each team should send 1–3 representative(s) to attend the meeting. The place of the technical meeting will be announced in due course.

The technical meeting content will be presented as follows:

- IWUF Event Guidelines (IWUF representatives)
- Event Logistics Information (LOC representatives)
- Event Technical Details (Chair of Jury of Appeals and Chief Referee)
- Other Matters

## 19. DRAWING OF LOTS

After the technical meeting, the drawing of lots will be conducted by the scheduler-recorder group supervised by the Jury of Appeals and the Chief Referee on **May 12, 2026**.

Each Team should send 2 representatives to attend the sessions.

The Jury of Appeals will draw on behalf of the teams that are unable to send a representative to attend.

## **20. TECHNICAL OFFICIALS**

### **20.1 International Technical Officials (ITOs)**

- IWUF will select and appoint the independent judges and the Jury of Appeals at its discretion to serve at IWUF SWC 2026.
- All judges of IWUF SWC 2026 must hold their **valid IWUF Judge's License** at the time of the competition.

#### **20.1.1 Registration**

- The Jury of Appeals and all judges appointed by the IWUF shall submit their registration information through **the IWUF Online Registration System**.
- All judges of IWUF SWC 2026 must input their **valid IWUF Judge's License numbers** through the online registration system.

#### **20.1.2 Uniforms**

All ITOs shall prepare their own black jackets, white shirts, black slacks, and black leather shoes, as well as bring the IWUF ties/scarfs.

#### **20.1.3 Judges' Refresher Course**

- All IWUF SWC 2026 judges are required to participate in the Judges' Refresher Course.
- Absence without a valid reason will be forfeiture of the right to officiate at IWUF SWC 2026.

### **20.2 National Technical Officials (NTOs)**

All NTOs serving IWUF SWC 2026 will be nominated by the LOC.

## **21. SUPERVISORY COMMISSION**

IWUF SWC 2026 Supervisory Commission shall be established by the IWUF, with the purpose of and the right to resolve any disputes or investigate any issues that arise during the course of this competition to ensure the smooth execution of the event.

The Supervisory Commission for an IWUF competition consists of 3–5 members appointed by the President of the IWUF and is responsible for overseeing the competition management and dispute mediation for the entire duration of this competition and not beyond. Specific descriptions of responsibilities include:



- The Commission will ensure that competitions adhere to principles of fair play, impartiality, and transparency.
- The Commission represents the IWUF in handling disputes regarding the competitions that arise between the NFs and/or teams and/or LOC, and has the right to resolve such disputes. However, the Commission does not directly interfere with the competition proceedings or disputes arise within the competition, which are the responsibility of the Jury of Appeals and the relevant judging panel.
- The Commission represents the IWUF in coordinating between the NFs and/or teams and/or LOC.
- The Commission shall report any irregularities or violations observed during the competitions to the IWUF President and the IWUF Executive Board.
- The Commission shall monitor and demand that NFs take responsibility for their athletes' general attitude and comporment.

### III. TEAM INFORMATION

#### 22. ACCOMMODATION

**LOC will provide free accommodation and meals for in-quota athletes and team officials**, while observers must reserve their own hotels and pay for their accommodation and meals.

##### 22.1 Hotel Reservation

All accredited personnel are required to stay at the LOC-designated hotels.

- **Check-in: After 15:00**
- **Check-out: Before 12:00**

**NOTES:** Teams wishing to:

- Check-in **before 15:00 on May 11, 2026** must book accommodation **from May 10**.
- Check-out **after 12:00 on May 16, 2026** must book accommodation **until May 17**.

##### 22.1.1 Non-Compliance Policy

Teams choosing not to book the LOC-designated hotels due to special reasons shall pay a one-time Waiver Fee of **USD 200** per person. In such cases:

- Teams shall assume full responsibility for their own accommodation, meals, and transportation.
- LOC shall not be liable for any consequences arising therefrom.

##### 22.1.2 Reservation Principles

- Hotel reservations are available on a **first-come, first-served** basis.
- Early reservations are **strongly recommended** due to limited availability.

##### 22.1.3 Meal Arrangements

LOC will provide meals for all accredited personnel:

- From the evening of their arrival date to the midday on their departure date
- 3 meals daily (breakfast, lunch, and dinner)

##### 22.1.4 Early Arrival and Late Departure Requirements

Participants wishing to arrive or depart outside the scheduled dates must:

- Submit their intended arrival and departure dates during the final registration process.
- Confirm accommodation bookings accordingly, with daily rates applicable.

## 22.2 Room Assignment Rules

- ***In-quota athletes and team officials*** will be accommodated in double rooms.
- ***For teams with an odd number of delegates*** (including athletes and team officials), LOC will assign the extra delegate to share a double room with a member from another team.

## 22.3 Hotels Information

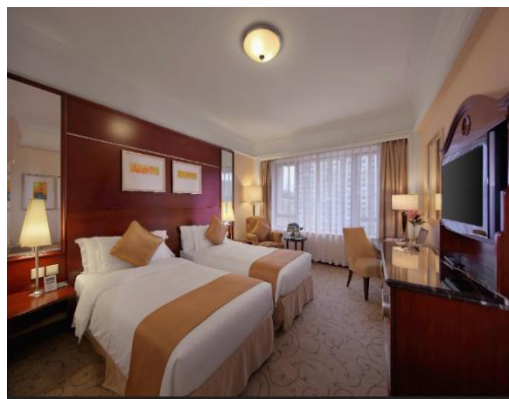
### 22.3.1 VIP Hotel & Judge Hotel

- ***Hotel Royal Macao***

Address: No. 2-4 Estrada da Vitoria, Macao

The distance to Tap Seac Multisport Pavilion Main Arena is 0.3km (5 minutes on foot).

Hotel Royal Macao, designated as the official accommodation for judges of this event, is situated in the prime location of Macao Peninsula with convenient transportation access. With multiple specialty restaurants on site, it offers professional dining services for judges. The hotel also provides modern meeting facilities and a business center to meet the office and conference requirements of judges during the event. Additionally, leisure facilities including a fitness center are available, ensuring a comfortable working and resting environment for the judges.



Accreditation Category	Participation Fee Per Person Per Night	
	<b>Single Room</b> Only one person allowed	<b>Double Room</b> Two persons allowed

VIPs and Judge	USD 166	USD 133
----------------	---------	---------

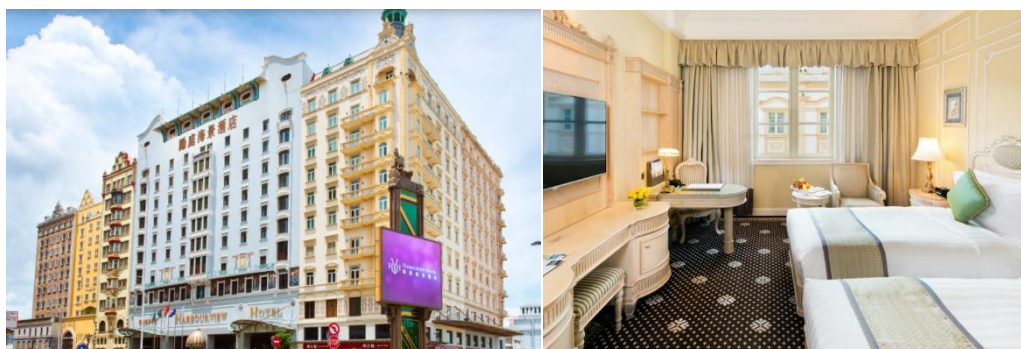
### 22.3.2 Team Hotel

- **Harbourview Hotel Macao**

Address: Harbourview Hotel, Macau Fisherman's Wharf, Avenida Dr. Sun Yat-Sen, Macao

The distance to Tap Seac Multisport Pavilion Main Arena is 2km (10-12 minutes on car).

The Harbourview Hotel transports travelers to the baroque Central Europe of centuries ago. With sophisticated and exquisite designs based on 18th century Prague, the Harbourview Hotel Macau brings dining and shopping experiences like none other. Our Hotel offers 389 comfortable guest rooms and 55 spacious suites with branded bathroom amenities and complimentary in-room Wi-Fi access so you can stay in touch with friends and family. This combination of historic charm and modern elegance incorporates everything a guest could hope for from Shanghainese and international cuisine to the cocktails at the Praha Bar. The jacuzzi, all-season indoor swimming pool, and gymnasium help guests unwind and relieve tension. Lastly, you can enjoy endless tourist attractions on the Macau Peninsula. Our Art Nouveau style hotel ensures your stay will be an enjoyable experience and a fantastic place to create life-long memories.



Accreditation Category	Participation Fee Per Person Per Night	
	Single Room Only one person allowed	Double Room Two persons allowed
Observer(s)	USD 160	USD 130

## 23. TRANSPORTATION



### **23.1 Transport Services for Arrivals and Departures**

Transport services between Macao International Airport and the official hotels will be provided by the LOC for all accredited personnel on their arrival and departure dates.

**Notes:** Teams entering Macao, China via other ports requiring transport services should contact the LOC.

- **Pick-Up: May 11 and May 12, 2026** (from the airport to the hotels)
- **Drop-Off: May 16, 2026** (from the hotels to the airport)

### **23.2 Shuttle Services**

Shuttle buses will operate between the official hotels and the competition and training venues. Schedules will be distributed on arrival.

## **24. FINANCIAL CONDITIONS**

### **24.1 Teams**

- Any team members' international or domestic airfare and related travel expenses, as well as the participation fees of the observers shall be borne by themselves.
- The participation fees include accommodation, meals, pick-up/drop-off to and from the designated airport, local transportation, entry (excluding the late entry and changes fees) and certificate, etc.

### **24.2 Technical Officials**

LOC will provide all ITOs appointed by the IWUF with the international airfare, accommodation, meals, pick-up/drop-off to and from the designated airport, and shuttle bus between the judge hotel and the competition venue.

### **24.3 Additional Costs**

Participants arriving early or departing late may be subject to additional costs related thereto which shall be borne by the participants themselves.

### **24.4 Payment Methods**

- All teams are required to complete full payment in advance to the LOC **by 23:59 on April 3, 2026** through international wire transfer. Until complete payment is received, hotel rooms will not be reserved, and accreditation will not be issued.
- Teams that are unable to pay through international remittance due to government policies and restrictions should communicate with the LOC in advance to make arrangements, otherwise

accreditation will not be issued.

- All international wire transfer and bank fees are to be paid by the teams transferring the funds themselves.
- Proof of full payment should be sent to the LOC by email and brought along to the LOC by the team leader. LOC requires that all participation fees are to be paid in advance in order to secure accommodation as required by the official hotels. LOC will be unable to guarantee a team's required accommodation without pre-payment in full. Teams are requested to be mindful of this when submitting their final entry.
- The bank information of the LOC:

Bank Name:	Tai Fung Bank
Bank Address:	Tai Fung Bank Headquarters Building, 418 Alameda Dr. Carlos d' Assumpção, Macao SAR
Bank Telephone:	+853 28322323
Bank SWIFT Code:	TFBLMOMX
Account Name:	ASSOCIACAO GERAL DE WUSHU DE Macao
Account Number:	201-1-10005-4
Beneficiary Address:	Rua De Ferreira Do Amaral, Pavilhão Polidesportivo Tap Seac, Floor B2, Room B219, Macao SAR
Contact Person:	Chou Chi Seng
Telephone:	+853 2856 7873
E-mail:	macauwushu@gmail.com
Note: 1. Any service charges incurred for international wire transfers shall be borne by participants themselves. 2.The organizing committee accepts only U.S. dollars.	

## 25. DOPING CONTROL

Doping control will be conducted during IWUF SWC 2026 according to the requirements of the International Olympic Committee (IOC) and the World Anti-Doping Agency (WADA), and will follow the procedure prescribed in the IWUF Anti-Doping Rules. The number of tests will be decided by the International Testing Agency (ITA). If an athlete is found have positively doped through the doping process, he/she will be dealt with in accordance with the IWUF Anti-Doping Rules.

## 26. RESPONSIBILITY OF MEMBER FEDERATIONS

The IWUF member federations (NFs) are responsible for their officials, coaches, athletes, doctors, team judges and observers adhering to the IWUF and to all relevant rules established by the IWUF and the LOC. NFs should ensure that their participants hold themselves to the highest standards in all their actions during the event.

## **26.1 Fundamental Principles**

All NFs' members participating in IWUF SWC 2026 must observe and respect the IWUF constitution, rules, regulations, and representatives. Individuals deemed to have acted against the IWUF, its principles, interests or purpose may be subject to suspension or expulsion from the event and/or cancellation of their accreditation.

## **26.2 Attitude of Athletes and Coaches**

Athletes will compete under the responsibility of their NFs. NFs are fully responsible regarding the general attitude and comportment of their athletes. Coaches should respect the judging panel and all complaints must be conducted in accordance with competition procedures. Athletes and coaches should comply with the IWUF Code of Ethics. Any act against the IWUF judging panel may be subject to suspension or expulsion from the event and/or cancellation of their accreditation and/or competition results.

## **26.3 Image of Athletes**

Each NF is responsible for obtaining the rights for the IWUF to use its athletes' images at the discretion of the IWUF for promotional purposes in all forms.

## **27. INSURANCE**

Each NF is fully and sole responsible for insuring its athletes against injury and third-party risk (public liability) during the period of IWUF SWC 2026. IWUF and LOC are not responsible in part or in whole of the said liability.

## **28. PASSPORT AND VISA REQUIREMENTS**

All participants must hold a valid passport and should allow plenty of time for visa application and processing.

To avoid complications during visa application and travel as much as possible, it is suggested that all participants' passports are valid for at least 6 months following their final day of travel.

Teams that require visa invitation letters should state their requests in the Entry Form before **March 31, 2026**.

If you need any assistance on visa issues, please contact the LOC via email: [macauwushu@gmail.com](mailto:macauwushu@gmail.com).

**NOTE: We strongly recommend teams that need to apply for visas do so as early as possible.**

## **29. ANNEX**

Annex 1: List of Qualified Athletes by Event



Annex 2: Waiver of Liabilities

Annex 3: Medical Certificate (Sample)

Annex 4: IWUF Brand Control Guidelines for Wushu Competition Uniforms (excerpt)

Annex 1

## IWUF Sanda World Cup 2026

### List of Qualified Athletes by Event

#### 1. Men's 48KG

No.	Name	Code	Qualification Way	Participation Fee Paid By
1	Jianhui LI	CHN	17th WWC	LOC
2	Ali DAOUD	EGY	17th WWC	LOC
3	Tharwt MAHYOUB ALI NAJI AL-SENDI	YEM	17th WWC	LOC

#### 2. Men's 52KG

No.	Name	Code	Qualification Way	Participation Fee Paid By
1	Jiaming OU	CHN	17th WWC	LOC
2	Dinh VAN TAM	VIE	17th WWC	LOC
3	Fereddy SINAGA	INA	17th WWC	LOC
3	Russel DIAZ	PHI	17th WWC	LOC

#### 3. Men's 56KG

No.	Name	Code	Qualification Way	Participation Fee Paid By
1	Arsen UMALATOV	AIN	17th WWC	LOC
2	Carlos BAYLON JR	PHI	17th WWC	LOC
3	Sagar DAHIYA	IND	17th WWC	LOC
3	Hua VAN DOAN	VIE	17th WWC	LOC

#### 4. Men's 60KG

No.	Name	Code	Qualification Way	Participation Fee Paid By
1	Zunlong WANG	CHN	17th WWC	LOC
2	Geonsu PARK	KOR	17th WWC	LOC
3	Arsen BAGHRYAN	ARM	17th WWC	LOC
3	Gideon Fred PADUA	PHI	17th WWC	LOC

### 5. Men's 65KG

No.	Name	Code	Qualification Way	Participation Fee Paid By
1	Chengjin WANG	CHN	17th WWC	LOC
2	Shoja PANAHIGELEHKOLAEI	IRI	17th WWC	LOC
3	Xander ALIPIO	PHI	17th WWC	LOC
3	Spencer MENG	USA	17th WWC	LOC

### 6. Men's 70KG

No.	Name	Code	Qualification Way	Participation Fee Paid By
1	Erfan MOHARRAMI PIRAGHOM	IRI	17th WWC	LOC
2	Alizhan ABLAGATOV	KAZ	17th WWC	LOC
3	Eziz MUHAMMEDOV	TKM	17th WWC	LOC
3	Truong VAN CHUONG	VIE	17th WWC	LOC

### 7. Men's 75KG

No.	Name	Code	Qualification Way	Participation Fee Paid By
1	Gensheng JIN	CHN	17th WWC	LOC
2	Mohsen MOHAMMADSEIFI	IRI	17th WWC	LOC
3	Joao Antonio DE OLIVEIRA	BRA	17th WWC	LOC
3	Gicheol SONG	KOR	17th WWC	LOC

### 8. Men's 80KG

No.	Name	Code	Qualification Way	Participation Fee Paid By
1	Weijin LI	HKG	17th WWC	LOC
2	Andrei MIADZUN	AIN	17th WWC	LOC
3	Marouane ADIMI	ALG	17th WWC	LOC
3	Soheil MOUSAVI	IRI	17th WWC	LOC

### 9. Men's 85KG

No.	Name	Code	Qualification Way	Participation Fee Paid By
1	Dzhapar MAGOMEDOV	AIN	17th WWC	LOC



2	Muhammet JUMAMYRADOV	TKM	17th WWC	LOC
3	Sergiu Daniel BREB	ROU	17th WWC	LOC
3	Murat ERDEM	TUR	17th WWC	LOC

#### 10. Men's 90KG

No.	Name	Code	Qualification Way	Participation Fee Paid By
1	Mahdi MORADI	IRI	17th WWC	LOC
2	Serdar JORAKULYYEV	TKM	17th WWC	LOC
3	Eduardo Efrain CRUZ PEREZ	MEX	17th WWC	LOC

#### 11. Men's 100KG

No.	Name	Code	Qualification Way	Participation Fee Paid By
1	Shamil ABDULMUSLIMOV	AIN	17th WWC	LOC
2	Nikson MICHEL	FRA	17th WWC	LOC
3	Markus GLUTZ	SUI	17th WWC	LOC

#### 12. Men's 100+KG

No.	Name	Code	Qualification Way	Participation Fee Paid By
1	Nursultan TURSUNKULOV	KAZ	17th WWC	LOC
2	Ahmed SHALABY	EGY	17th WWC	LOC
3	Karimzhon BALTABAEV	KGZ	17th WWC	LOC
3	Charymyrat ANNAGURBANOV	TKM	17th WWC	LOC

#### 13. Women's 48KG

No.	Name	Code	Qualification Way	Participation Fee Paid By
1	Yuxia DU	CHN	17th WWC	LOC
2	Nguyen THI LAN	VIE	17th WWC	LOC
3	Yuling CHEN	HKG	17th WWC	LOC
3	Xuezheng LIANG	MAC	17th WWC	LOC

#### 14. Women's 52KG

No.	Name	Code	Qualification Way	Participation Fee Paid By
1	Ngo THI PHUONG NGA	VIE	17th WWC	LOC
2	Aparna	IND	17th WWC	LOC
3	Tharisa Dea FLORENTINA	INA	17th WWC	LOC
3	Jenifer KILAPIO	PHI	17th WWC	LOC

### 15. Women's 56KG

No.	Name	Code	Qualification Way	Participation Fee Paid By
1	Nguyen THI THU THUY	VIE	17th WWC	LOC
2	Beatriz ADRIAO RUSTICE SILVA	BRA	17th WWC	LOC
3	Tsz Ching CHAN	HKG	17th WWC	LOC
3	Krisna MALECDAN	PHI	17th WWC	LOC

### 16. Women's 60KG

No.	Name	Code	Qualification Way	Participation Fee Paid By
1	Xiaowei WU	CHN	17th WWC	LOC
2	Kareena Kaushik	IND	17th WWC	LOC
3	Nathalia BRIQUESI SILVA	BRA	17th WWC	LOC
3	Man Sin CHU	MAC	17th WWC	LOC

### 17. Women's 65KG

No.	Name	Code	Qualification Way	Participation Fee Paid By
1	Sedigheh DARIAEIVARCADEH	IRI	17th WWC	LOC
2	Sudenaz GULAY	TUR	17th WWC	LOC
3	Mariia EGOROVA	AIN	17th WWC	LOC
3	Claudia Valeria MONARREZ MUNIZ	MEX	17th WWC	LOC

### 18. Women's 70KG

No.	Name	Code	Qualification Way	Participation Fee Paid By
1	Soheila MANSOURIAN SEMIROMI	IRI	17th WWC	LOC
2	Ruiping CHEN	CHN	17th WWC	LOC



3	Mennatallah ALY	EGY	17th WWC	LOC
3	Naoui CHAIMA	TUN	17th WWC	LOC

**19. Women's 75KG**

No.	Name	Code	Qualification Way	Participation Fee Paid By
1	Shahrbano MANSOURIYAN SEMIROMI	IRI	17th WWC	LOC
2	Shivani	IND	17th WWC	LOC
3	Ekaterina VALCHUK	AIN	17th WWC	LOC
3	Sydney CARR	USA	17th WWC	LOC

**Note:** The above lists are subject to change depending on the registered athletes.



Annex 2

**IWUF Sanda World Cup 2026  
 Waiver of Liabilities**

Federation				Color ID Photo
Name of Participant				
Date of Birth		Gender		
Nationality		Passport No.		
Role of Participant				
*Athlete *Team Manager *Coach *Doctor *Observer				

I, the undersigned, knowingly and without duress, do voluntarily submit my Entry to IWUF Sanda World Cup 2026 (IWUF SWC 2026). IWUF SWC 2026 is hosted by the International Wushu Federation (IWUF) and organized by the Wushu General Association of Macau and the City of Macao, China, hereafter the Wushu General Association of Macau and the City of Macao, China are referred as "Organizing Committee". I understand and acknowledge that the participation in IWUF SWC 2026 involves inherent risk of losses, damages or injuries, including but not limited to risks deriving from participating in the competition and trainings, in the use of the sporting facilities or equipment and/or risks arising from actions or omissions of other participants or other third parties. I further understand that my participation in IWUF SWC 2026 is subject to my agreement and acceptance of this Waiver of Liabilities ("Waiver"). In consideration of the IWUF and the Organizing Committee accepting my application, I hereby assume all risk of physical and mental injuries, disabilities and losses which may result from or in connection with my participation in IWUF SWC 2026. Acting for myself, heirs, personal officers, agents, representatives and assignees, I do hereby release, to the extent permissible, the IWUF and the Organizing Committee including all associates, auxiliaries and affiliates, such as but not limited to their officers, agents, employees, representatives, volunteers, judges and referees and other related members from all claims, actions, suits, and controversies related to any loss, damage or injury by reason of any matter, cause or thing whatsoever that I may sustain as a result of or in connection with my participation in IWUF SWC 2026. I fully understand and acknowledge that it is my sole responsibility to determine whether I am fit and healthy enough to participate in any events without posing a risk to myself or others. I hereby certify that, to the best of my knowledge, this is the case. I understand to have a duty to inspect the state of the used sporting facilities and equipment, and I waive any claim arising out of any respective defect. I fully understand that all medical attention or treatment afforded to me by the IWUF and the Organizing Committee including all associates, auxiliaries and affiliates, e.g. their officers, medical personnel, representatives, employees, volunteers, and all other related members, will be of the first aid type only, and I hereby consent to receiving such treatment and release the IWUF and the Organizing Committee as well as their officers, representatives, volunteers, employees and all other related members from any liability for such aid. I understand it is my personal obligation to obtain my own medical coverage. I am fully and solely responsible for adequately insuring myself against injury and third-party risk (public liability), with such insurance to cover the period before, during and after the event. IWUF and the Organizing Committee including all associates are not responsible in part or in whole for any damages



or medical or hospital expenses incurred as a result of participation in IWUF SWC 2026.

I agree to abide by and follow the Rules established by the IWUF and the Organizing Committee and follow all received instructions. I acknowledge and agree that it is my personal responsibility to be informed about all aforementioned Rules and instructions. I agree that I will conduct myself in a professional and courteous manner at all times and to be subject to penalties and sanctions for violations related thereto, pursuant to the IWUF Constitution and the IWUF Ethics Code as updated from time to time and other Rules established by the IWUF and the Organizing Committee. I understand that any dispute must be resolved in accordance with the IWUF Constitution and any further applicable IWUF Rules. I agree that my performance, attendance, and participation at IWUF SWC 2026 may be photographed, filmed or otherwise recorded or released or telecast live. I consent to allow the IWUF and the Organizing Committee use of my name, likeness, address, voices, poses, pictures, videos, live or non-live coverage and biographical and biological data concerning full or parts, in any form or language ("Identity, Voice and Image Data"), with or without other material, throughout the world, without limitation, for television, radio, video, theatrical medium picture, or any other medium and any other purpose by the IWUF or the Organizing Committee through any devices now known or hereafter devised and I do hereby waive any compensation in regard thereof as well as any future rights to the aforementioned. I also consent to the collecting, processing and use of all above-mentioned Identity, Voice and Image Data by the IWUF and the Organizing Committee for commercial and promotional services of sponsors and media partners as well as, where necessary, by third parties for the purpose of facilitating my participation and accreditation in the event (e.g. law enforcement authorities, border services agencies etc.).

Furthermore, while I note that the IWUF and the Organizing Committee will take into consideration my needs to rest, train and prepare for the events, I agree to be reasonably available during the Events for TV/digital/radio interviews, promotional or press photo sessions and press conferences at the dedicated areas.

If any provision of this Waiver is deemed to be invalid or unenforceable, the remaining provisions shall remain in full force and effect. This Waiver shall be governed by the IWUF Constitution, the further applicable Rules established by the IWUF and the Organizing Committee and, subsidiarily, by Swiss law.

I have read and fully understand the waiver listed above.

**\*\*For athletes under the age of 18 -This waiver must be signed by their parent or legal guardian\*\***

Signature of Participant	Signature of Parent/Legal Guardian	Name of Parent/Legal Guardian
	(If participant is under 18 years of age)	
Date	Date	Date

Annex 3

## IWUF Sanda World Cup 2026 Medical Certificate (Sample)

### 1. ATHLETE INFORMATION

Surname				Color ID Photo
Given Name(s)				
Country		Postal Code		
Passport No.		Telephone. No		
Email				
Address				

### 2. QUESTIONS FOR ATHLETE (Attach relevant documents if you answered 'yes' to any of the following)

Is a doctor currently treating you?	
Have you ever been unconscious or had a concussion?	
Have you been hit hard in the head in the last 6 months?	
Have you had any headache in the last 2 weeks?	
Do you have any problems with bleeding?	
Do any diseases run in your family?	
Have you had any surgery?	
Have you ever had to stay in a hospital?	
Do you have any medical condition?	
Do you have a history of seasonal or drug allergies?	
Is there a history of sudden death under 45 years old in the family?	

### 3. MEDICAL DOCTOR INFORMATION

Surname	
Given Name(s)	
Telephone No.	
Address	



#### 4. MEDICAL EXAMINATION

Item				Abnormalities
Head	Cranial nerves, eyes, pupil size and reactivity. Fundi. Vision by chart.	Normal	Abnormal	
	Mouth, teeth, throat	Normal	Abnormal	
	Ears	Normal	Abnormal	
	Temporomandibular joint	Normal	Abnormal	
	Brain Examination: electroencephalogram (EEG) Test (Sanda athletes only)	Normal	Abnormal	
Neck	Cervical spine, lymph nodes	Normal	Abnormal	
Chest	Breath sounds, rib, tenderness on compression	Normal	Abnormal	
Neurological System	Reflexes	Normal	Abnormal	
	Verbal responses	Normal	Abnormal	
	Motor responses and balance	Normal	Abnormal	
Cardiovascular System	Heart rate	Normal	Abnormal	
	Blood pressure	Normal	Abnormal	
	Heart examination: electrocardiogram (ECG) Test	Normal	Abnormal	
Medications Used	Name and dosage	Yes	No	

#### 5. DOCTOR CONFIRMATION

I confirm that the Athlete is <input type="checkbox"/> fit / <input type="checkbox"/> not fit to participate in the competition.	Signature:  Place/Date:
--	-------------------------------

#### 6. NATIONAL FEDERATION CONFIRMATION

**I confirm that the above information provided is true and correct.**

National Federation			
Name of Representative			
Title of Representative			
Signature:			Date:

Annex 4

## **International Wushu Federation (IWUF)** **Brand Control Guidelines for Wushu Competition Uniforms (excerpt)**

### **1. PURPOSE**

To ensure sponsor and manufacturer rights by establishing a standard for brand placement on uniforms and other clothing items used during IWUF wushu competition.

### **2. STANDARDS AND GUIDELINES**

Uniforms of athletes, coaches and team officials

### **3. GENERAL REQUIREMENTS**

The manufacturer's logo may appear once on each piece of clothing, with an area of up to 20 cm<sup>2</sup>. Note that only the quantity and size of logos appearing on uniforms will be assessed during the competition, and logos will not be reviewed for accuracy or adherence to brand standards.

The manufacturer's logo may appear once on each accessory item (paired accessories are considered as two items), with an area of up to 6 cm<sup>2</sup>.

A manufacturer's logo may appear once on each shoe or foot item (paired shoes or foot items are considered as two items), with an area of up to 6 cm<sup>2</sup>.

A national/regional Olympic Committee flag, a national/regional wushu federation flag/logo may each appear once where specified, with an area of up to 20 cm<sup>2</sup> each.

### **4. WUSHU SANDA COMPETITION UNIFORM REQUIREMENTS**

#### **4.1 Top/shirt**

- **Front**

A flag may appear on the left chest area, with an area of up to 20 cm<sup>2</sup>.

The manufacturer's logo may appear on the right chest area, with an area of up to 20 cm<sup>2</sup>.

Sponsor or other logos may be displayed in other areas but may not appear within 5 cm of the flag or manufacturer logo. The total number of sponsor or other logos may not exceed one, with a maximum

area of 20 cm<sup>2</sup>.

- **Back**

Sponsor or other logos may be displayed in back areas. The total number of sponsor or other logos may not exceed three, with a maximum area of 20 cm<sup>2</sup>.

#### 4.2 Shorts

- **Left leg**

The manufacturer's logo may be arranged on the top, with an area of up to 10 cm<sup>2</sup>.

Sponsor logos may appear below the manufacturer's logo but may not appear within 5 cm of the manufacturer's logo. The total number of sponsor or other logos may not exceed one, with an area of up to 10 cm<sup>2</sup>.

- **Right leg**

No logo, flag, or other emblem may appear.





# WU S

IWUF APP



- RECOGNIZED BY / IN PARTNERSHIP WITH -



- OFFICIAL SOCIAL MEDIA PLATFORMS -



- IWUF APP -



- IWUF GLOBAL PARTNER -



- IWUF GLOBAL SUPPLIER -

