



IWUF
4th Taolu World Cup

REGULATIONS

🕒 July 4-9, 2026

📍 Haikou, China

International Federation
recognised by the



International
Olympic
Committee

Version 1, issued on April 8 , 2026 by IWUF

© International Wushu Federation

Lausanne Office: Avenue de Rhodanie 58, 1007 Lausanne, Switzerland

Beijing Office: 9 Huaweili, Chaoyang District, 100021 Beijing, China

www.iwuf.org



CONTENTS

I. GENERAL INFORMATION

| | |
|--|---|
| 1. INTRODUCTION | 1 |
| 1.1 China Overview | 1 |
| 1.1.1 Geography | 1 |
| 1.1.2 Climate | 1 |
| 1.1.3 Population, Ethnicity and Language | 1 |
| 1.1.4 Religion | 2 |
| 1.1.5 Others | 2 |
| 1.2 Haikou Overview | 2 |
| 1.3 International Airport | 3 |
| 1.4 Weather | 4 |
| 1.5 Electricity | 4 |
| 1.6 Telephone | 4 |
| 2. INTRODUCTION TO IWUF TAOLU WORLD CUP | 4 |
| 3. DATES AND PLACE | 4 |
| 3.1 Competition Date | 5 |
| 3.2 Important Dates | 5 |
| 3.2.1 Final Entry | 5 |
| 3.2.2 Late Entry and Changes | 5 |
| 3.2.3 Registration of Athletes' Degree of Difficulty and Compulsory Contents | 5 |
| 4. VENUES | 5 |
| 4.1 Competition Venue | 5 |
| 4.2 Training Venue | 5 |
| 5. GENERAL PROGRAM | 6 |
| 6. KEY CONTACTS | 6 |

II. TECHNICAL INFORMATION

| | |
|-------------------------------|---|
| 7. COMPETITION EVENTS | 8 |
| 8. QUALIFICATIONS | 8 |
| 8.1 Membership | 8 |
| 8.2 Athlete Eligibility | 8 |



| | |
|--|----|
| 9. PARTICIPATION METHODS | 9 |
| 9.1 Quota | 9 |
| 9.1.1 Athlete | 9 |
| 9.1.2 Team official | 9 |
| 9.1.3 Observer | 9 |
| 9.2 Relevant Documents | 9 |
| 10. COMPETITION RULES | 9 |
| 11. COMPETITION METHODS | 10 |
| 11.1 Individual Routines | 10 |
| 11.2 Duilian Events | 10 |
| 11.3 Compulsory Content | 10 |
| 11.4 Routine Time Limits | 10 |
| 11.5 Accompanying Music | 11 |
| 12. COSTUMES AND EQUIPMENT | 11 |
| 12.1 Compliance Requirement of Marketing and Advertising | 11 |
| 12.2 Uniforms and Equipment Requirements for Competition | 11 |
| 12.3 Clothing Requirements for Opening / Closing Ceremonies | 11 |
| 12.4 Clothing Requirements for Awards Ceremony | 11 |
| 12.5 Compliance Check at Roll-Call Area | 11 |
| 13. PLACING AND AWARDS | 12 |
| 14. AWARDS CEREMONY | 12 |
| 14.1 Medalists | 12 |
| 14.2 Athletes and Team Officials | 12 |
| 14.3 Special Cases | 12 |
| 14.3.1 Medalist Absence | 12 |
| 14.3.2 Insufficient Participants | 12 |
| 15. ENTRIES | 13 |
| 15.1 Final Entry | 13 |
| 15.1.1 Open and Close Dates | 13 |
| 15.1.2 Uploading Documents | 13 |
| 15.1.3 Requirements for Registration | 13 |
| 15.2 Late Entry and Changes Policy | 13 |
| 15.2.1 Open and Close Dates | 14 |
| 15.2.2 Relevant Fees and Requirements | 14 |
| 15.3 Registration of Degree of Difficulty and Compulsory Content | 14 |
| 16. ARRIVALS AND ACCREDITATION | 14 |



| | |
|--|----|
| 16.1 Arrivals..... | 14 |
| 16.2 Accreditation | 15 |
| 17. TECHNICAL MEETING | 15 |
| 18. DRAWING OF LOTS | 16 |
| 19. TECHNICAL OFFICIALS | 16 |
| 19.1 International Technical Officials (ITOs)..... | 16 |
| 19.1.1 Registration | 16 |
| 19.1.2 Uniforms | 16 |
| 19.1.3 Judges' Refresher Course | 16 |
| 19.2 National Technical Officials (NTOs)..... | 16 |
| 20. SUPERVISORY COMMISSION | 16 |

III. TEAM INFORMATION

| | |
|--|----|
| 21. ACCOMMODATION | 18 |
| 21.1 Hotel Reservation..... | 18 |
| 21.1.1 Non-Compliance Policy | 18 |
| 21.1.2 Reservation Principles | 18 |
| 21.1.3 Meal Arrangements | 18 |
| 21.1.4 Early Arrival and Late Departure Requirements | 18 |
| 21.2 Room Assignment Rules..... | 19 |
| 21.3 Hotels Information..... | 19 |
| 21.3.1 VIP & Judges Hotel | 19 |
| 21.3.2 Team Hotel | 19 |
| 22. TRANSPORTATION | 19 |
| 22.1 Transport Services for Arrivals and Departures..... | 19 |
| 22.2 Shuttle Services..... | 19 |
| 23. FINANCIAL CONDITIONS | 19 |
| 23.1 Teams..... | 19 |
| 23.2 Technical Officials..... | 20 |
| 23.3 Additional Costs..... | 20 |
| 23.4 Payment Methods | 20 |
| 24. DOPING CONTROL | 20 |
| 25. RESPONSIBILITY OF MEMBER FEDERATIONS | 20 |
| 25.1 Fundamental Principles..... | 21 |
| 25.2 Attitude of Athletes and Coaches | 21 |



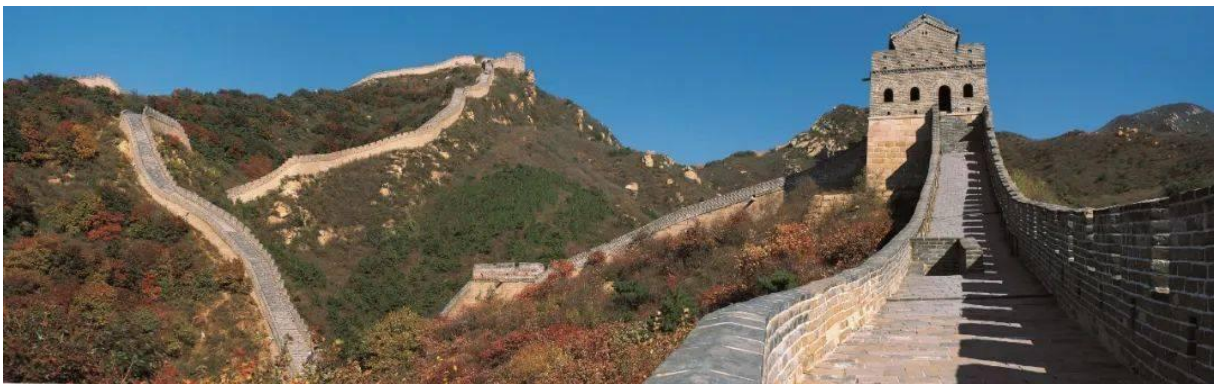
| | |
|--|----|
| 25.3 Image of Athletes | 21 |
| 26. INSURANCE | 21 |
| 27. PASSPORT AND VISA REQUIREMENTS | 21 |
| 28. ANNEX | 22 |
| Annex 1 | 23 |
| Annex 2 | 31 |
| Annex 3 | 41 |
| Annex 4 | 43 |
| Annex 5 | 45 |

I. GENERAL INFORMATION

1. INTRODUCTION

1.1 China Overview

China, one of world' s most ancient civilizations, has a history dating back over 5,000 years. This has led to the country having an extraordinarily rich cultural heritage. As the world's largest developing country, China has seen remarkable progress in its economic and social development. Today' s China is politically and socially stable, and economically prosperous, with its people's lives getting better each day.



1.1.1 Geography

China is located on the east side of Asia and the west edge of the Pacific Ocean. Covering a land area of about 9.6 million square kilometers, it features over 18,000 kilometers of continental coastline along its eastern and southern edges, and approximately 4.7 million square kilometers of inland and border seas. There are more than 7,600 islands of varying sizes in the sea area, among which the island of Taiwan, with an area of 35,798 square kilometers, is the largest.

1.1.2 Climate

Given its sheer size, it is perhaps not surprising that China has a range of climates. Most of the country lies in northern temperate zone that features a mild, continental monsoon climate and four distinct seasons.

1.1.3 Population, Ethnicity and Language

Population: 1,411.78 million.

Ethnicity: China is a multi-ethnic country with 56 ethnic groups in total.



Language: There are more than 80 local languages and about 30 Chinese writing systems. Mandarin (also known as Putonghua) is the country's national language.

1.1.4 Religion

Religion: China is a multi-religious country. The main religions are Buddhism, Taoism, Islam, Catholicism and Christianity. Chinese citizens enjoy freedom of religious belief.

1.1.5 Others

China shares borders with 14 countries and is adjacent to eight countries by sea. The capital city is Beijing. China is comprised of provincial-level administrative divisions that can be further classified into: 4 municipalities directly under the central government, 23 provinces, 5 autonomous regions and 2 Special Administrative Regions.

Currency: The legal currency is renminbi (RMB), with yuan as the basic unit, and jiao and fen as fractions of this basic unit. One yuan is equal to 10 jiao and one jiao equal to 10 fen. Foreign currency can be freely exchanged in most hotels and banks on the Chinese mainland.

1.2 Haikou Overview

Hainan Province, situated in southern China, has a population of 10.48 million and covers a land area of 35,400 square kilometers. The 18th parallel north runs through the province's central region. Renowned worldwide as a tropical marine vacation destination, Hainan is currently being developed into the world's most open free trade port and is an excellent platform for wushu exchanges. The province is served by three international airports with a combined annual passenger throughput of 50 million. These airports operate 69 international air routes, and the province receives over 1.5 million international visitors annually.

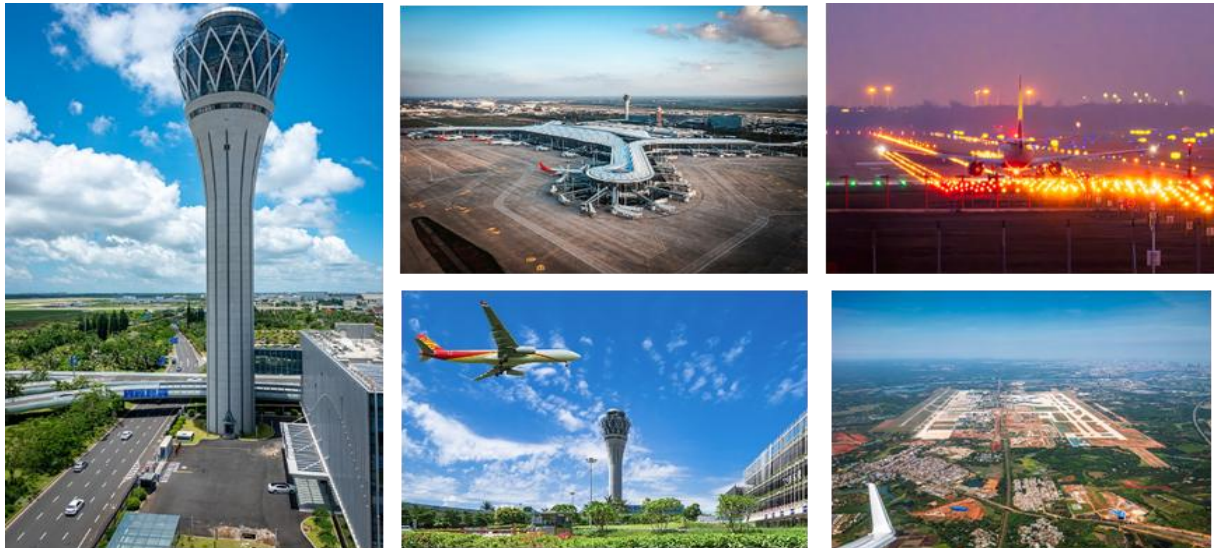
Haikou, the capital city of Hainan Province, covers 3,127 square kilometers and boasts a permanent population of 3.03 million. The local economy is driven by trade, finance, sports, tourism, culture, and technology. Haikou enjoys a pleasant annual average temperature of 24.4°C, is bordered by the sea in two directions, and is intersected by three rivers. With a green coverage rate exceeding 40%, Haikou consistently ranks as one of the best air quality cities in China and is known as one of the happiest cities in the country. Haikou hosts over 30 international and national events annually and has successfully hosted international events such as the IWWF World Wakesurf Championships, the International Dragon Boat Invitational, and the Hainan International Wushu Competition.



1.3 International Airport

Haikou Meilan International Airport (IATA: HAK, ICAO: ZJHK) is an aviation hub for China equipped with two 3,600-meter runways and two terminals (T1 and T2) covering 440,000 square meters, and offers 137 aircraft stands. The airport has an annual capacity of 35 million passengers and operates 35 direct international and regional routes, covering destinations across Asia, Europe, Oceania. Hainan offers visa-free entry for citizens of 86 countries. Travelers from around the world can conveniently reach Haikou via 72 direct international routes or through connecting flights from Beijing, Shanghai, Guangzhou, or Hong Kong of China.

Haikou boasts a comprehensive urban transportation system that includes high-speed rail, city buses, taxis, and ride-hailing services. During the event, dedicated VIP arrival and departure channels will be established at the airport, including exclusive check-in counters and security lanes, along with 24-hour airport pick-up services. A fleet of new-energy vehicles and professional multilingual volunteers will be on standby. Dedicated shuttle routes, supplemented by smart mini-buses and an optimized urban road network, will connect all official hotels and the main competition venue, providing efficient “point-to-point” transportation from the airport to hotels and from hotels to the venue.



1.4 Weather

Historical average temperatures for Haikou in July range from 27°C–33°C.

1.5 Electricity

The electricity standard in Haikou is 220V (50Hz).

1.6 Telephone

To call Haikou from abroad, dial +86 (country code) followed by the local number.

2. INTRODUCTION TO IWUF TAOLU WORLD CUP

Hosted by the International Wushu Federation (IWUF), IWUF Taolu World Cup (IWUF TWC) is one of the official events of the IWUF. This prestigious competition typically occurs biennially, showcasing the top taolu athletes from the most recent World Wushu Championships (WWC).

With the first edition of IWUF TWC taking place in 2016, three editions have been held since then. The Chinese Wushu Association is responsible for the organization of IWUF 4th TWC (4th edition) under the auspices of the IWUF.

For more information on IWUF 4th TWC, please visit the IWUF official website <http://www.iwuf.org>, also visit the official social media, Facebook, Instagram (IG), YouTube.

3. DATES AND PLACE

(all the following dates and times in Beijing Time)

IWUF 4th TWC will be held **from July 4 to 9, 2026, in Haikou, China.**

3.1 Competition Date

From July 4 to July 9, 2026

3.2 Important Dates

3.2.1 Final Entry

From April 16 to June 3, 2026

3.2.2 Late Entry and Changes

(upon acceptance by IWUF)

From June 4 to June 17, 2026

3.2.3 Registration of Athletes' Degree of Difficulty and Compulsory Contents

From April 16 to June 27, 2026

4. VENUES

The main venue for the competition will be the Haikou Wuyuanhe Stadium, which has a total floor area of over 78,000 square meters, 339 parking spaces, and a seating capacity of 18,000. The venue is fully equipped with medical facilities, check-in areas, lounges, a competition command center, meeting rooms, and VIP reception spaces. It also includes dedicated training grounds, gyms, and equipment rooms. The stadium features two timing and scoring screens and 16 centrally suspended ring LED displays, meeting all requirements for hosting world-class sports and cultural events.



Address: No. 176 Changbin Road, Xiuying District, Haikou City, Hainan Province

4.1 Competition Venue

Wuyuanhe Stadium

4.2 Training Venue

Wuyuanhe Stadium



5. GENERAL PROGRAM

| Date | Time | Activity | Location |
|---------------|--------------|---------------------------------------|------------------|
| July 4 (Sat) | Whole Day | Team Arrivals and Registration | Team Hotel |
| | | Judges Arrivals and Registration | Judge Hotel |
| July 5 (Sun) | Whole Day | Team Arrivals and Registration | Team Hotel |
| | Whole Day | Judges' Refresher Course | Judge Hotel |
| | Whole Day | Team Training | Wuyuanhe Stadium |
| July 6 (Mon) | 09:00–12:00 | Team Training | Wuyuanhe Stadium |
| | | Judges' Refresher Course | Judge Hotel |
| | 10:00–12:00 | Technical Meeting and Drawing of Lots | TBD |
| | 14:00–18:00 | Team Training | Wuyuanhe Stadium |
| | 14:30–17:30 | Judges' Rehearsal | Wuyuanhe Stadium |
| July 7 (Tue) | 09:00–10:00 | Opening Ceremony | Wuyuanhe Stadium |
| | 10:00–12:00 | Competition and Awards Ceremony | Wuyuanhe Stadium |
| | 19:00–22:00 | Competition and Awards Ceremony | |
| July 8 (Wed) | 09:00–12:00 | Competition and Awards Ceremony | Wuyuanhe Stadium |
| | 19:00–22:00 | Competition and Awards Ceremony | |
| July 9 (Thur) | Before 14:00 | Departures | |

NOTES: 1. This program is subject to change depending on the number of the registered athletes.

6. KEY CONTACTS

● **IWUF Secretariat**

Tel: +86-10-87774492

Email: events@iwuf.org

● **Chinese Wushu Association (CWA)**

Contact Person: WANG Jiaqi

Tel: +86-10-64912153

Email: wushu@wushu.com.cn

● **Organizing Committee of IWUF 4th TWC**



(hereinafter referred to as "Local Organizing Committee", abbreviated as "LOC")

Tel: TBD

Email: TBD



II. TECHNICAL INFORMATION

7. COMPETITION EVENTS

Men's and Women's Events:

- Bare-hand routines: Changquan, Nanquan, and Taijiquan
- Short weapon routines: Jianshu, Daoshu, Nandao, and Taijijian
- Long weapon routines: Qiangshu, Gunshu, and Nangun
- Duilian (Choreographed sparring) (composed of 2-3 persons, men and women are not mixed)

8. QUALIFICATIONS

8.1 Membership

Only those federations/associations which have paid their IWUF annual membership fees for 2025 and 2026 will be permitted to participate in IWUF 4th TWC.

Hereinafter the IWUF member federation is referred to as "NF".

8.2 Athlete Eligibility

- **The top 8 athletes** of each event from **the 17th WWC** have qualified for IWUF 4th TWC. All qualified athletes are listed in Annex 1 and Annex 2.
- Those athletes that have qualified but do not compete in IWUF 4th TWC will be replaced by the athletes appointed by the IWUF.
- For any quota positions relinquished by athletes qualified for two or more events (as stipulated in Article 9.1.1), IWUF will allocate the vacant spots.
- Each qualified athlete must be submitted into IWUF 4th TWC by their NF.
- Athletes must be citizens of the country/territory that they are representing.
- Athletes who have dual citizenship can only represent one country/territory in IWUF 4th TWC.
- In cases where athletes have changed their citizenship, such athletes are required to have resided in the country or territory that they are representing for at least two (2) years prior to the opening day of the competition or activity, during which time they may not have represented any other country or territory in any international competition.
- Pursuant to the above, pursuant to the provisions of the Olympic Charter applying subsidiarily, the Technical Committee shall deal with all disputes relating to an athlete's eligibility for participation and



report to the IWUF Executive Board for a final decision.

9. PARTICIPATION METHODS

Each NF can enter at most **1 team**.

9.1 Quota

9.1.1 Athlete

- Each team can have **no more than 8 athletes**.
- Each qualified athlete may only participate within **the events he/she has qualified for**.
- Should an athlete has qualified for 2 or more events, **he/she may only participate in the two events (excluding Duilian events) where they achieved the highest rankings. In the event of a tie in rankings, the event with the higher score shall take precedence**. The unused positions will be filled by the athletes appointed by the IWUF.

9.1.2 Team official

- Teams that have **1–3 qualified athlete(s)** may submit **2 team officials** at most.
- Teams that have **4–6 qualified athletes** may submit **3 team officials** at most.
- Teams that have **7–8 qualified athletes** may submit **4 team officials** at most.

9.1.3 Observer

Extra team delegate(s) exceeding the quota shall be registered as observer(s).

9.2 Relevant Documents

Upon arrival at the Accreditation Desk, team leaders must submit the following documents:

- Completed and signed **Waiver of Liabilities** (Annex 3) of all participants
- **Medical Certificates** (Annex 4) of all athletes issued by a qualified medical doctor from a check-up performed within a period of **30 days** prior to the registration date of the competition
- **Life Accidental Injury Insurance Certificates** of all athletes

10. COMPETITION RULES

Unless otherwise stated within these regulations, the competition shall be conducted in accordance with **the IWUF Wushu Taolu Competition Rules and Judging Methods 2024** (hereinafter referred to as "rules").

The rules may be interpreted solely at the discretion of the IWUF. In case of any disagreement in the



interpretation of the rules, the Chinese version shall prevail.

11. COMPETITION METHODS

11.1 Individual Routines

For Changquan, Nanquan, Taijiquan, Jianshu, Daoshu, Taijijian, Nandao, Qiangshu, Gunshu and Nangun competitions, **the “Events with Degree of Difficulty Scoring Methods and Standards”** in the rules shall be implemented.

Within a routine, the same jumping difficulty movement can be performed 2 times at most, but the connecting movement cannot be repeated (e.g. within a single optional routine an athlete may register and perform xuànfēngjiǎo 360° (tornado kick360°) at most 2 times, but the connection movement for each tornado kick must be different). For B grade and above difficulty movements, the connection movement +6 (cross-legged sitting) can only be performed one time.

- In Changquan-type events, 323B, 323C, 324B, 324C and 353C must be connected to the connection movements as stipulated in the rules table 10-3-7 when landing.
- In Nanquan-type events, 323B, 323C, 324B, 324C and 346B must be connected to the connection movements as stipulated in the rules table 10-3-8 when landing.
- In Taijiquan-type events, 312B, 323B, 323C, 324B and 324C must be connected to the connection movements as stipulated in the rules table 10-3-9 when landing.
- All athletes are required to execute their optional routine's relevant compulsory/mandatory content, and failure to do so will result in deductions as stipulated in the rules.

11.2 Duilian Events

For Duilian competitions, **the “Events without Degree of Difficulty Scoring Methods and Standards”** in the rules shall be implemented.

11.3 Compulsory Content

All athletes are required to execute **the relevant compulsory content** in their optional routines and Duilian routines, and failure to do so will result in deductions as stipulated in the rules.

11.4 Routine Time Limits

- Changquan, Nanquan, Jianshu, Daoshu, Nandao, Qiangshu, Gunshu, and Nangun routines: **From 1 minute 20 seconds to 1 minute 35 seconds** in total duration
- Taijiquan and Taijijian routines: **From 2 minutes 45 seconds to 3 minutes 15 seconds** in total



duration

- Duilian routines: **From 50 seconds to 1 minute** in total duration

11.5 Accompanying Music

- Accompanying music is required for **Taijiquan and Taijijian routines**.
- Each NF must upload the accompanying music through **the IWUF Online Registration System** with their final entry submission. **NFs shall be responsible for the music copyright used.**
- Accompanying music with vocals and/or lyrics is not permitted.

12. COSTUMES AND EQUIPMENT

12.1 Compliance Requirement of Marketing and Advertising

All teams must follow the IWUF Brand Control Guidelines for Wushu Competition Uniforms (excerpt) (Annex 5).

12.2 Uniforms and Equipment Requirements for Competition

- Athletes shall wear wushu competition costumes and use the competition weaponry in compliance with the rules during all events.
- All athletes must provide their own uniforms and weaponry.
- LOC will provide 2 competition bibs (20cm*15cm) to the teams for each athlete's use upon accreditation.
- The athlete should show his/her competition bib to the Head Judge before he/she enters the competition mat.

12.3 Clothing Requirements for Opening / Closing Ceremonies

All teams must wear their official national/territorial team uniforms at the Opening and Closing Ceremonies.

12.4 Clothing Requirements for Awards Ceremony

Medalists are expected to attend the Awards Ceremony in their national/territorial team uniforms.

12.5 Compliance Check at Roll-Call Area

Uniforms and equipment checks will be conducted at the Roll-call Area in accordance with stated regulations and requirements. Uniforms and equipment checks are conducted by the Chief Registrar and



the Roll-call Officials as stipulated in the rules. Non-compliance may be subject to disqualification from the competition.

13. PLACING AND AWARDS

- **1st place:** Gold Medal and Certificate, CNY 10,000 prize money
- **2nd place:** Silver Medal and Certificate, CNY 6,000 prize money
- **3rd place:** Bronze Medal and Certificate, CNY 3,000 prize money

NOTES: Prize money may be awarded in CNY, in which case the conversion rate utilized will be based on the mid-market exchange rate.

All accredited personnel, including team officials, observers and athletes, will receive a IWUF 4th TWC participation certificate. Team leaders are required to collect the participation certificates for their team from the LOC at the Results and Certificates Office.

14. AWARDS CEREMONY

14.1 Medalists

Medalists must:

- Attend the Awards Ceremony to receive their medals **in person**.
- Be escorted by staff to the Waiting Area **10 minutes** before the ceremony to prepare accordingly.
- Not bring any national/territorial, cultural or religious symbols onto the podium.
- Remove caps, hats, and sunglasses throughout the Awards Ceremony.
- Face the flags while they are being raised.

14.2 Athletes and Team Officials

Athletes and team officials are required to remain in the designated area.

14.3 Special Cases

14.3.1 Medalist Absence

- In case a medalist is unable to attend the ceremony for a valid reason, his/her medal and certificate may be presented to the appointed official of the team.
- Absence without a valid reason will result in forfeiture of the right to receive a medal.

14.3.2 Insufficient Participants



If there are fewer than 3 medalists in a single event, no Award Ceremony will be held for that event. The team leader will receive the medals and certificates at the Results and Certificates Office.

15. ENTRIES

All online entries must be submitted through ***the IWUF Online Registration System.***

- ***IWUF Online Registration System***

URL: <https://registration.iwuf.org>

Contact person: HUANG Xilong

Tel: +86-19952270889

Email: Service@jyywty.com

Tech-support: Jiangyin Yunwu Shiwu Sports Technology Co., Ltd

15.1 Final Entry

15.1.1 Open and Close Dates

- ***Open: April 16th, 2026***
- ***Close: June 3rd, 2026, at 23:59***

15.1.2 Uploading Documents

- ***Photos*** of the participants (white background, head filling 70–80% of the photo, at least 480 pixels in width and 600 pixels in height)
- ***Passports*** of the participants (must be valid for ***at least 6 months*** following their final day of travel)

15.1.3 Requirements for Registration

- All sections of the online entry must be completed ***in full.***
- All payments due to the LOC must be paid in full for registration to be considered as completed.
- Each team is required to print a copy of the submitted entry and present it to the LOC upon registration.

15.2 Late Entry and Changes Policy

After the final entry deadline, teams with requests for the late entries or changes must submit a written document for approval and shall pay corresponding fees before the late entry and changes deadline,



otherwise request will be denied.

15.2.1 Open and Close Dates

- **Open: June 4th, 2026**
- **Close: June 17th, 2026, at 23:59**

15.2.2 Relevant Fees and Requirements

- Any request to change the entry (including the late entry) will be handled as follows:
 - The late entry is subject to the approval of the IWUF and, if accepted, it will incur a late-entry fee of **USD 100** per participant.
 - Replacing a participant is subject to approval by the IWUF and, if accepted, it will incur a replacement fee of **USD 100** per participant.
 - If changes are required due to incorrect or missing registration information, those changes are subject to approval by the IWUF and, if accepted, it will incur a fee of **USD 50** per change.

| Late Entry | Replacement | Information Change |
|------------|-------------|--------------------|
| USD 100 | USD 100 | USD 50 |

- The above fees must be paid via wire transfer to the IWUF **before 23:59 on June 17th, 2026**.

15.3 Registration of Degree of Difficulty and Compulsory Content

Online registration of the athletes' Degree of Difficulty and compulsory content of the optional routines must be submitted through **the IWUF Online Registration System**. The system will be:

- **Opened on April 16th, 2026**
- **Closed on June 27th, 2026, at 23:59**

16. ARRIVALS AND ACCREDITATION

16.1 Arrivals

The following accredited personnel are required to register with the LOC at the LOC-designated hotels no later than:

- **Judges: July 4th, 2026, at 23:59**
- **Athletes and team officials: July 5th, 2026, at 23:59**



16.2 Accreditation

Accreditation Desks will open **on July 4th, 2026, at 9:00.**

Upon arrival at the Accreditation Desk, the team leader is required to complete the following process:

| | |
|----|---|
| 1 | Present each team members' passports |
| 2 | Submit Final Entry Form with signature and stamp and confirm the registration information |
| 3 | Submit 3 national flags (size: 1m*2m) |
| 4 | Submit national anthem (short version) in MP3 format on a CD or USB flash drive |
| 5 | Submit signed Waiver of Liabilities of all participants (Annex 3) |
| 6 | Submit valid Medical Certificates (Sample) of all athletes (Annex 4) |
| 7 | Submit valid Life Accidental Injury Insurance Certificates of all athletes |
| 8 | Pay the relevant participation fees in full (if applicable) |
| 9 | Pay the relevant penalty fees in full (if applicable) |
| 10 | Submit a bank receipt of payment (either in paper or electronic documents) |
| 11 | Confirm each athlete's Registration Form for Degree of Difficulty and Compulsory Content of Optional Routines and sign the form |
| 12 | Sign and confirm all the above items are completed |

Accreditation cards will be given to the team leader upon completion of the accreditation process. All personnel must participate in the official activities with their accreditation card during IWUF 4th TWC.

The competition and training schedules will be distributed after accreditation has concluded.

17. TECHNICAL MEETING

The technical meeting for team managers and coaches will take place **on July 6th, 2026, at 10:00.** Each team should send representatives to attend the meeting. The place of the technical meeting will be announced in due course.

The technical meeting content will be presented as follows:

- IWUF Event Guidelines (IWUF representatives)
- Event Logistics Information (LOC representatives)
- Event Technical Details (Chair of Jury of Appeals and Chief Referee)
- Other Matters



18. DRAWING OF LOTS

After the technical meeting, the drawing of lots will be conducted by the scheduler-recorder group supervised by the Jury of Appeals and the Chief Referee on **July 6th, 2026**.

Each team should send 2 representatives to attend the sessions.

The Jury of Appeals will draw on behalf of the teams that are unable to send a representative to attend.

19. TECHNICAL OFFICIALS

19.1 International Technical Officials (ITOs)

- IWUF will select and appoint the independent judges and the Jury of Appeals at its discretion to serve at IWUF 4th TWC.
- All judges of IWUF 4th TWC must hold their **valid IWUF Judge's License** at the time of the competition.

19.1.1 Registration

- The Jury of Appeals and all judges appointed by the IWUF shall submit their registration information through **the IWUF Online Registration System**.
- All judges of IWUF 4th TWC must input their **valid IWUF Judge's License numbers** through the online registration system.

19.1.2 Uniforms

All ITOs shall prepare their own black jackets, white shirts, black slacks, and black leather shoes, as well as bring the IWUF ties/scarfs.

19.1.3 Judges' Refresher Course

- All IWUF 4th TWC judges are required to participate in the Judges' Refresher Course.
- Absence without a valid reason will be forfeiture of the right to officiate at IWUF 4th TWC.

19.2 National Technical Officials (NTOs)

All NTOs serving IWUF 4th TWC will be nominated by the LOC.

20. SUPERVISORY COMMISSION

IWUF 4th TWC Supervisory Commission shall be established by the IWUF, with the purpose of and the right to resolve any disputes or investigate any issues that arise during the course of this competition to ensure the



smooth execution of the event.

The Supervisory Commission for an IWUF competition consists of 3–5 members appointed by the President of the IWUF and is responsible for overseeing the competition management and dispute mediation for the entire duration of this competition and not beyond. Specific descriptions of responsibilities include:

- The Commission will ensure that competitions adhere to principles of fair play, impartiality, and transparency.
- The Commission represents the IWUF in handling disputes regarding the competitions that arise between the NFs and/or teams and/or LOC, and has the right to resolve such disputes. However, the Commission does not directly interfere with the competition proceedings or disputes arise within the competition, which are responsibility of the Jury of Appeals and the relevant judging panel.
- The Commission represents the IWUF in coordinating between the NFs and/or teams and/or LOC.
- The Commission shall report any irregularities or violations observed during the competitions to the IWUF President and the IWUF Executive Board.
- The Commission shall monitor and demand that NFs take responsibility for their athletes' general attitude and comporment.



III. TEAM INFORMATION

21. ACCOMMODATION

LOC will provide free accommodation and meals for in-quota athletes and team officials, while observers must reserve their own hotels and pay for their accommodation and meals.

21.1 Hotel Reservation

All accredited personnel are required to stay at the LOC-designated hotels.

- **Check-in: After 15:00**
- **Check-out: Before 11:00**

NOTES: Teams wishing to:

- Check-in **before 15:00 on July 4, 2026** must book accommodation **from July 3**.
- Check-out **after 11:00 on July 9, 2026** must book accommodation **until July 10**.

21.1.1 Non-Compliance Policy

Teams choosing not to book the LOC-designated hotels due to special reasons shall pay a one-time Waiver Fee of **USD 200** per person. In such cases:

- Teams shall assume full responsibility for their own accommodation, meals, and transportation.
- LOC shall not be liable for any consequences arising therefrom.

21.1.2 Reservation Principles

- Hotel reservations are available on a **first-come, first-served** basis.
- Early reservations are **strongly recommended** due to limited availability.

21.1.3 Meal Arrangements

LOC will provide meals for all accredited personnel:

- From the evening of their arrival date to the midday on their departure date
- 3 meals daily (breakfast, lunch, and dinner)

21.1.4 Early Arrival and Late Departure Requirements

Participants wishing to arrive or depart outside the scheduled dates must:



- Submit their intended arrival and departure dates during the final registration process.
- Confirm accommodation bookings accordingly, with daily rates applicable.

21.2 Room Assignment Rules

- ***In-quota athletes and team officials*** will be accommodated in double rooms.
- ***For teams with an odd number of delegates*** (including athletes and team officials), LOC will assign the extra delegate to share a double room with a member from another team.
- ***Should anyone require a single room***, he/she will be charged for a room upgrade fee of **USD 40** per person per night.

21.3 Hotels Information

21.3.1 VIP & Judges Hotel

- **TBD**

21.3.2 Team Hotel

- **TBD**

22. TRANSPORTATION

22.1 Transport Services for Arrivals and Departures

Transport services between Haikou Meilan International Airport and the official hotels will be provided by the LOC for all accredited personnel on their arrival and departure dates.

- ***Pick-Up: July 4 and 5, 2026*** (from the airport to the hotels)
- ***Drop-Off: July 9, 2026*** (from the hotels to the airport)

22.2 Shuttle Services

Shuttle buses will operate between the official hotels and the competition and training venues. Schedules will be distributed on arrival.

23. FINANCIAL CONDITIONS

23.1 Teams

- Any international or domestic airfare and related travel expenses, as well as the participation fees of the observers shall be borne by themselves.



- The participation fees include accommodation, meals, pick-up/drop-off to and from the designated airport, local transportation, entry (excluding the late entry and changes fees) and certificate, etc.

23.2 Technical Officials

LOC will provide all ITOs appointed by the IWUF with the international airfare, accommodation, meals, pick-up/drop-off to and from the designated airport, and shuttle bus between the judge hotel and the competition venue.

23.3 Additional Costs

Participants arriving early or departing late may be subject to additional costs related thereto which shall be borne by the participants themselves.

23.4 Payment Methods

- All teams are required to complete full payment in advance to the LOC **by 23:59 on June 3rd, 2026** through international wire transfer. Until complete payment is received, hotel rooms will not be reserved, and accreditation will not be issued.
- Teams that are unable to pay through international remittance due to government policies and restrictions should communicate with the LOC in advance to make arrangements, otherwise accreditation will not be issued.
- All international wire transfer and bank fees are to be paid by the teams transferring the funds themselves.
- Proof of full payment should be sent to the LOC by email and brought along to the LOC by the team leader. LOC requires that all participation fees are to be paid in advance in order to secure accommodation as required by the official hotels. LOC will be unable to guarantee a team's required accommodation without pre-payment in full. Teams are requested to be mindful of this when submitting their final entry.
- The bank information of the LOC will be released once confirmed.

24. DOPING CONTROL

Doping control will be conducted during IWUF 4th TWC according to the requirements of the International Olympic Committee (IOC) and the World Anti-Doping Agency (WADA), and will follow the procedure prescribed in the IWUF Anti-Doping Rules. The number of tests will be decided by the International Testing Agency (ITA). If an athlete is found have positively doped through the doping process, he/she will be dealt with in accordance with the IWUF Anti-Doping Rules.

25. RESPONSIBILITY OF MEMBER FEDERATIONS



The IWUF member federations (NFs) are responsible for their officials, coaches, athletes, doctors, team judges and observers adhering to the IWUF and to all relevant rules established by the IWUF and the LOC. NFs should ensure that their participants hold themselves to the highest standards in all their actions during the event.

25.1 Fundamental Principles

All NFs' members participating in IWUF 4th TWC must observe and respect the IWUF constitution, rules, regulations, and representatives. Individuals deemed to have acted against the IWUF, its principles, interests or purpose may be subject to suspension or expulsion from the event and/or cancellation of their accreditation.

25.2 Attitude of Athletes and Coaches

Athletes will compete under the responsibility of their NFs. NFs are fully responsible regarding the general attitude and comportment of their athletes. Coaches should respect the judging panel and all complaints must be conducted in accordance with competition procedures. Athletes and coaches should comply with the IWUF Code of Ethics. Any act against the IWUF judging panel may be subject to suspension or expulsion from the event and/or cancellation of their accreditation and/or competition results.

25.3 Image of Athletes

Each NF is responsible for obtaining the rights for the IWUF to use its athletes' images at the discretion of the IWUF for promotional purposes in all forms.

26. INSURANCE

Each NF is fully and sole responsible for insuring its athletes against injury and third-party risk (public liability) during the period of IWUF 4th TWC. IWUF and LOC are not responsible in part or in whole of the said liability.

27. PASSPORT AND VISA REQUIREMENTS

All participants must hold a valid passport and should allow plenty of time for visa application and processing.

To avoid complications during visa application and travel as possible, it is suggested that all participants' passports are valid for at least 6 months following their final day of travel.

Teams that require visa invitation letters should state their requests in the Entry Form **before June 23, 2026**.

If you need any assistance on visa issues, please contact the LOC via email: wushu@wushu.com.cn

NOTE: We strongly recommend teams that need to apply for visas do so as early as possible.



28. ANNEX

Annex 1: List of Qualified Athletes by Event

Annex 2: List of Qualified Athletes by NF

Annex 3: Wavier of Liabilities

Annex 4: Medical Certificate (Sample)

Annex 5: IWUF Brand Control Guidelines for Wushu Competition Uniforms (excerpt)



Annex 1

IWUF 4th Taolu World Cup List of Qualified Athletes by Event

1. Men's Changquan

| No. | Name | Code | Qualification Way | Remark |
|-----|--------------------------|------|---|--------|
| 1 | Yalin YANG | CHN | 1 st - 17 th WWC | |
| 2 | Yonghyun LEE | KOR | 2 nd - 17 th WWC | |
| 3 | Edgar Xavier MARVELO | INA | 3 rd - 17 th WWC | |
| 4 | Loan DROUARD | FRA | 4 th - 17 th WWC | |
| 5 | Chi Kuan SONG | MAC | 7 th - 17 th WWC | |
| 6 | Walid LACHKAR | BRU | 8 th - 17 th WWC | |
| 7 | Seraf Naro SIREGAR | INA | 9 th - 17 th WWC | |
| 8 | Suraj Singh MAYANGLAMBAM | IND | 10 th - 17 th WWC | |

2. Men's Nanquan

| No. | Name | Code | Qualification Way | Remark |
|-----|-------------------------|------|---|--------|
| 1 | Hongjie DU | CHN | 1 st - 17 th WWC | |
| 2 | Wen Sheng HUANG | TPE | 4 th - 17 th WWC | |
| 3 | Mohd Adi Salihin ROSLAN | BRU | 5 th - 17 th WWC | |
| 4 | Shahin BANITALEBI | IRI | 7 th - 17 th WWC | |
| 5 | Chi Ngou CHAN | MAC | 8 th - 17 th WWC | |
| 6 | Donghae YUN | KOR | 9 th - 17 th WWC | |
| 7 | Mykyta KOVALOV | UKR | 10 th - 17 th WWC | |
| 8 | Dario STELLUTI | ITA | 11 th - 17 th WWC | |

3. Men's Taijiquan

| No. | Name | Code | Qualification Way | Remark |
|-----|--------------------|------|--|--------|
| 1 | Hyeonggi AN | KOR | 1 st - 17 th WWC | |
| 2 | Tak Yan Samuei HUI | HKG | 2 nd - 17 th WWC | |
| 3 | Yu Xuan TAY | SGP | 3 rd - 17 th WWC | |
| 4 | Jun Kai CHAN | SGP | 4 th - 17 th WWC | |
| 5 | Jones Llabres INSO | PHI | 5 th - 17 th WWC | |



| | | | | |
|---|----------------|-----|--|--|
| 6 | Tomohiro ARAYA | JPN | 6 th – 17 th WWC | |
| 7 | Brandon J LUO | CAN | 7 th – 17 th WWC | |
| 8 | Zi Hong WONG | MAS | 8 th – 17 th WWC | |

4. Men's Jianshu

| No. | Name | Code | Qualification Way | Remark |
|-----|----------------------|------|--|--------|
| 1 | Shin Peng SI | MAS | 1 st – 17 th WWC | |
| 2 | Ka Hou CHIN | MAC | 2 nd – 17 th WWC | |
| 3 | Jinsong CHEN | HKG | 3 rd – 17 th WWC | |
| 4 | Ahmad Ghifari FUAIZ | INA | 4 th – 17 th WWC | |
| 5 | Motoyoshi ARAKI | JPN | 5 th – 17 th WWC | |
| 6 | Bijay SINJALI | NEP | 6 th – 17 th WWC | |
| 7 | Abolfazl GHAREHBAGHI | IRI | 7 th – 17 th WWC | |
| 8 | Nguyen VAN SY | VIE | 8 th – 17 th WWC | |

5. Men's Daoshu

| No. | Name | Code | Qualification Way | Remark |
|-----|-----------------------|------|--|--------|
| 1 | Seraf Naro SIREGAR | INA | 1 st – 17 th WWC | |
| 2 | Jowen Si Wei LIM | SGP | 2 nd – 17 th WWC | |
| 3 | Kirill-zui BONDARENKO | AIN | 3 rd – 17 th WWC | |
| 4 | Clement Su Wei TING | MAS | 4 th – 17 th WWC | |
| 5 | Hasung LEE | KOR | 5 th – 17 th WWC | |
| 6 | Yu Hsuan CHENG | TPE | 6 th – 17 th WWC | |
| 7 | Ibuki TAKAGI | JPN | 7 th – 17 th WWC | |
| 8 | Nathan LY | USA | 8 th – 17 th WWC | |

6. Men's Nandao

| No. | Name | Code | Qualification Way | Remark |
|-----|---------------------|------|--|--------|
| 1 | Chi Lung LAU | HKG | 1 st – 17 th WWC | |
| 2 | Shahin BANITALEBI | IRI | 3 rd – 17 th WWC | |
| 3 | Chi Ngou CHAN | MAC | 4 th – 17 th WWC | |
| 4 | Mostafa HASSANZADEH | IRI | 5 th – 17 th WWC | |
| 5 | Bryan Kai Jie TI | MAS | 7 th – 17 th WWC | |



| | | | | |
|---|---------------------------|-----|---|--|
| 6 | Kamil KHALILIULIN | AIN | 8 th - 17 th WWC | |
| 7 | Gabriel KOMAZIRO NAKAMURA | BRA | 9 th - 17 th WWC | |
| 8 | Rasa RAHNEMA | CAN | 10 th - 17 th WWC | |

7. Men's Taijijian

| No. | Name | Code | Qualification Way | Remark |
|-----|--------------------|------|--|--------|
| 1 | Haonan GAO | CHN | 1 st - 17 th WWC | |
| 2 | Tak Yan Samuei HUI | HKG | 2 nd - 17 th WWC | |
| 3 | Tomohiro ARAYA | JPN | 3 rd - 17 th WWC | |
| 4 | Yu Xuan TAY | SGP | 4 th - 17 th WWC | |
| 5 | Chung Hei YEUNG | HKG | 5 th - 17 th WWC | |
| 6 | Luke TIAN | USA | 6 th - 17 th WWC | |
| 7 | Zi Hong WONG | MAS | 7 th - 17 th WWC | |
| 8 | Jones Llabres INSO | PHI | 8 th - 17 th WWC | |

8. Men's Qiangshu

| No. | Name | Code | Qualification Way | Remark |
|-----|---------------------|------|--|--------|
| 1 | Shin Peng SI | MAS | 1 st - 17 th WWC | |
| 2 | Chi Hin KUONG | MAC | 2 nd - 17 th WWC | |
| 3 | Motoyoshi ARAKI | JPN | 3 rd - 17 th WWC | |
| 4 | Ahmad Ghifari FUAIZ | INA | 4 th - 17 th WWC | |
| 5 | Ka Hou CHIN | MAC | 5 th - 17 th WWC | |
| 6 | Shaun CHEN | USA | 6 th - 17 th WWC | |
| 7 | Pavel MURATOV | AIN | 7 th - 17 th WWC | |
| 8 | Chi Kuan SONG | MAC | 8 th - 17 th WWC | |

9. Men's Gunshu

| No. | Name | Code | Qualification Way | Remark |
|-----|---------------------|------|--|--------|
| 1 | Xiaobin GAO | CHN | 1 st - 17 th WWC | |
| 2 | Loan DROUARD | FRA | 2 nd - 17 th WWC | |
| 3 | Hasung LEE | KOR | 3 rd - 17 th WWC | |
| 4 | Jowen Si Wei LIM | SGP | 4 th - 17 th WWC | |
| 5 | Clement Su Wei TING | MAS | 5 th - 17 th WWC | |



| | | | | |
|---|--------------------------|-----|--|--|
| 6 | Ibuki TAKAGI | JPN | 6 th - 17 th WWC | |
| 7 | Yu Hsuan CHENG | TPE | 7 th - 17 th WWC | |
| 8 | Suraj Singh MAYANGLAMBAM | IND | 8 th - 17 th WWC | |

10. Men's Nangun

| No. | Name | Code | Qualification Way | Remark |
|-----|-------------------------|------|--|--------|
| 1 | Chi Lung LAU | HKG | 1 st - 17 th WWC | |
| 2 | Wen Sheng HUANG | TPE | 2 nd - 17 th WWC | |
| 3 | Mohd Adi Salihin ROSLAN | BRU | 3 rd - 17 th WWC | |
| 4 | Terrence TJAHYADI | INA | 4 th - 17 th WWC | |
| 5 | Bryan Kai Jie TI | MAS | 5 th - 17 th WWC | |
| 6 | Mostafa HASSANZADEH | IRI | 6 th - 17 th WWC | |
| 7 | Donghae YUN | KOR | 7 th - 17 th WWC | |
| 8 | Kamil KHALILIULIN | AIN | 9 th - 17 th WWC | |

11. Men's Duilian

| No. | Name | Code | Qualification Way | Remark |
|-----|---|------|--|--------|
| 1 | Ka Hou CHIN/Chi Hin KUONG/Cheok leong LEI | MAC | 1 st - 17 th WWC | |
| 2 | Edgar Xavier MARVELO/Ahmad Ghifari FUAIZ/Seraf Naro SIREGAR | INA | 2 nd - 17 th WWC | |
| 3 | Clement Su Wei TING/Shin Peng SI/Bryan Kai Jie TI | MAS | 3 rd - 17 th WWC | |
| 4 | Mykyta KOVALOV/Volodymyr SHYNKARENKO/Bohdan NAIDA | UKR | 4 th - 17 th WWC | |
| 5 | Jun Kai CHAN/Yu Xuan TAY/Zi Meng ONG | SGP | 5 th - 17 th WWC | |
| 6 | Vincent VENTURA/Mark Lester RAGAY/Mark Anthony POLO | PHI | 6 th - 17 th WWC | |
| 7 | Yonghyun LEE/Hasung LEE/Donghae YUN | KOR | 7 th - 17 th WWC | |
| 8 | Shaun CHEN/Nathan LY | USA | 8 th - 17 th WWC | |

12. Women's Changquan

| No. | Name | Code | Qualification Way | Remark |
|-----|----------------------|------|--|--------|
| 1 | Hui Yu Lydia SHAM | HKG | 1 st - 17 th WWC | |
| 2 | Michelle YEUNG | HKG | 2 nd - 17 th WWC | |
| 3 | Sandra KONSTANTINOVA | AIN | 3 rd - 17 th WWC | |



| | | | | |
|---|---------------------|-----|--|--|
| 4 | Eugenia Diva WIDODO | INA | 4 th - 17 th WWC | |
| 5 | Patricia GERALDINE | INA | 5 th - 17 th WWC | |
| 6 | Kana IKEUCHI | JPN | 6 th - 17 th WWC | |
| 7 | Weng Ian WONG | MAC | 7 th - 17 th WWC | |
| 8 | Nyeman WANGSU | IND | 8 th - 17 th WWC | |

13. Women's Nanquan

| No. | Name | Code | Qualification Way | Remark |
|-----|------------------------|------|--|--------|
| 1 | Siwoo BYUN | KOR | 1 st - 17 th WWC | |
| 2 | Tang Hsuan CHAO | TPE | 2 nd - 17 th WWC | |
| 3 | Leianna YUEN | USA | 3 rd - 17 th WWC | |
| 4 | Lucy LEE | USA | 4 th - 17 th WWC | |
| 5 | Sam In WONG | MAC | 5 th - 17 th WWC | |
| 6 | Tasya Ayu Puspa DEWI | INA | 6 th - 17 th WWC | |
| 7 | Xue Ling Kassandra ONG | SGP | 7 th - 17 th WWC | |
| 8 | Helia ASADIAN | IRI | 8 th - 17 th WWC | |

14. Women's Taijiquan

| No. | Name | Code | Qualification Way | Remark |
|-----|-------------------------|------|--|--------|
| 1 | Xu WU | CHN | 1 st - 17 th WWC | |
| 2 | Zeanne Zhi Ning LAW | SGP | 2 nd - 17 th WWC | |
| 3 | Shiho SAITO | JPN | 3 rd - 17 th WWC | |
| 4 | Sydney Sy Xuan CHIN | MAS | 4 th - 17 th WWC | |
| 5 | Vera Yan Ning TAN | SGP | 5 th - 17 th WWC | |
| 6 | Oryna IVANOVA | UKR | 6 th - 17 th WWC | |
| 7 | Agatha Chrystenzen WONG | PHI | 7 th - 17 th WWC | |
| 8 | Pei Hsun LIU | TPE | 8 th - 17 th WWC | |

15. Women's Jianshu

| No. | Name | Code | Qualification Way | Remark |
|-----|---------------|------|--|--------|
| 1 | Yawen WANG | CHN | 1 st - 17 th WWC | |
| 2 | Nanoha KIDA | JPN | 2 nd - 17 th WWC | |
| 3 | Weng Ian WONG | MAC | 3 rd - 17 th WWC | |



| | | | | |
|---|-------------------|-----|--|--|
| 4 | Zahra KIANI | IRI | 4 th - 17 th WWC | |
| 5 | Aksiniia SCHUKINA | AIN | 5 th - 17 th WWC | |
| 6 | Duong THUY VI | VIE | 6 th - 17 th WWC | |
| 7 | Ashley OSHIBA | USA | 8 th - 17 th WWC | |
| 8 | Erica Jia Yi LI | CAN | 9 th - 17 th WWC | |

16. Women's Daoshu

| No. | Name | Code | Qualification Way | Remark |
|-----|---------------------|------|--|--------|
| 1 | Jia Rong LEE | MAS | 1 st - 17 th WWC | |
| 2 | Michelle YEUNG | HKG | 2 nd - 17 th WWC | |
| 3 | Kana IKEUCHI | JPN | 3 rd - 17 th WWC | |
| 4 | Elena CHOW | USA | 4 th - 17 th WWC | |
| 5 | Eugenia Diva WIDODO | INA | 5 th - 17 th WWC | |
| 6 | Cho Man SOU | MAC | 6 th - 17 th WWC | |
| 7 | Nyeman WANGSU | IND | 7 th - 17 th WWC | |
| 8 | Sushmita TAMANG | NEP | 8 th - 17 th WWC | |

17. Women's Nandao

| No. | Name | Code | Qualification Way | Remark |
|-----|----------------------|------|---|--------|
| 1 | Yaling ZHANG | CHN | 1 st - 17 th WWC | |
| 2 | Cheong Min TAN | MAS | 2 nd - 17 th WWC | |
| 3 | Tasya Ayu Puspa DEWI | INA | 4 th - 17 th WWC | |
| 4 | Darya LATISHEVA | UZB | 5 th - 17 th WWC | |
| 5 | Roaa KHALED | EGY | 9 th - 17 th WWC | |
| 6 | Silvia CRUZ | POR | 10 th - 17 th WWC | |
| 7 | Lara COSSA | ITA | 11 th - 17 th WWC | |
| 8 | Alessia TARTUFOLI | ITA | 12 th - 17 th WWC | |

18. Women's Taijijian

| No. | Name | Code | Qualification Way | Remark |
|-----|-------------------------|------|--|--------|
| 1 | Shiho SAITO | JPN | 1 st - 17 th WWC | |
| 2 | Zeanne Zhi Ning LAW | SGP | 2 nd - 17 th WWC | |
| 3 | Agatha Chrystenzen WONG | PHI | 3 rd - 17 th WWC | |



| | | | | |
|---|---------------------|-----|--|--|
| 4 | Pei Hsun LIU | TPE | 4 th – 17 th WWC | |
| 5 | Vera Yan Ning TAN | SGP | 5 th – 17 th WWC | |
| 6 | Basma LACHKAR | BRU | 6 th – 17 th WWC | |
| 7 | Sydney Sy Xuan CHIN | MAS | 7 th – 17 th WWC | |
| 8 | Anastasiia KADENOVA | AIN | 8 th – 17 th WWC | |

19. Women's Qiangshu

| No. | Name | Code | Qualification Way | Remark |
|-----|--------------------|------|--|--------|
| 1 | Zahra KIANI | IRI | 1 st - 17 th WWC | |
| 2 | Patricia GERALDINE | INA | 2 nd - 17 th WWC | |
| 3 | Duong THUY VI | VIE | 3 rd - 17 th WWC | |
| 4 | Hui Yu Lydia SHAM | HKG | 4 th - 17 th WWC | |
| 5 | Pui Yee PANG | MAS | 5 th - 17 th WWC | |
| 6 | Aksiniia SCHUKINA | AIN | 6 th - 17 th WWC | |
| 7 | Yi Chen LIN | TPE | 7 th - 17 th WWC | |
| 8 | Yana POLTORATSKA | UKR | 8 th - 17 th WWC | |

20. Women's Gunshu

| No. | Name | Code | Qualification Way | Remark |
|-----|----------------------|------|---|--------|
| 1 | Xueshi HAN | CHN | 1 st - 17 th WWC | |
| 2 | Cho Man SOU | MAC | 2 nd - 17 th WWC | |
| 3 | Jia Rong LEE | MAS | 3 rd - 17 th WWC | |
| 4 | Elena CHOW | USA | 4 th - 17 th WWC | |
| 5 | Gabin KO | KOR | 7 th - 17 th WWC | |
| 6 | Sandra KONSTANTINOVA | AIN | 8 th - 17 th WWC | |
| 7 | Valeria DUDAMEL | VEN | 10 th - 17 th WWC | |
| 8 | Virginia RIVERA VERA | MEX | 11 th - 17 th WWC | |

21. Women's Nangun

| No. | Name | Code | Qualification Way | Remark |
|-----|-----------------|------|--|--------|
| 1 | Cheong Min TAN | MAS | 1 st - 17 th WWC | |
| 2 | Tang Hsuan CHAO | TPE | 2 nd - 17 th WWC | |
| 3 | Siwoo BYUN | KOR | 3 rd - 17 th WWC | |



| | | | | |
|---|------------------------|-----|--|--|
| 4 | Helia ASADIAN | IRI | 4 th - 17 th WWC | |
| 5 | Xue Ling Kassandra ONG | SGP | 5 th - 17 th WWC | |
| 6 | Leianna YUEN | USA | 6 th - 17 th WWC | |
| 7 | Darya LATISHEVA | UZB | 7 th - 17 th WWC | |
| 8 | Roaa KHALED | EGY | 9 th - 17 th WWC | |

22. Women's Duilian

| No. | Name | Code | Qualification Way | Remark |
|-----|--|------|--|--------|
| 1 | Jia Rong LEE、Pui Yee PANG、Cheong Min TAN | MAS | 1 st - 17 th WWC | |
| 2 | Jasmine Chu Yi ZHU、Alessia TARTUFOLI | ITA | 2 nd - 17 th WWC | |
| 3 | Michelle YEUNG、Hui Yu Lydia SHAM | HKG | 3 rd - 17 th WWC | |
| 4 | Zahra KIANI、Helia ASADIAN | IRI | 4 th - 17 th WWC | |
| 5 | Tasya Ayu Puspa DEWI、Eugenia Diva WIDODO | INA | 5 th - 17 th WWC | |
| 6 | Elizabeth Hoongpei LIM、Jessica Haan Yung LIM | AUS | 6 th - 17 th WWC | |
| 7 | Cho Man SOU、Weng Ian WONG | MAC | 7 th - 17 th WWC | |
| 8 | Langlontombi Devi HANJABAM、Nyeman WANGSU | IND | 8 th - 17 th WWC | |

Note: The above lists are subject to change depending on the registered athletes.



Annex 2

IWUF 4th Taolu World Cup List of Qualified Athletes by NF

1. AUS (Australia)

| No. | Name | Event | Qualification Way |
|-----|------------------------|-----------------|--|
| 1 | Elizabeth Hoongpei LIM | Women's Duilian | 6 th - 17 th WWC |
| 2 | Jessica Haan Yung LIM | Women's Duilian | 6 th - 17 th WWC |

2. BRA (Brazil)

| No. | Name | Event | Qualification Way |
|-----|---------------------------|--------------|--|
| 1 | Gabriel KOMAZIRO NAKAMURA | Men's Nandao | 9 th - 17 th WWC |

3. BRU (Brunei Darussalam)

| No. | Name | Event | Qualification Way |
|-----|-------------------------|-------------------|--|
| 1 | Mohd Adi Salihin ROSLAN | Men's Nangun | 3 rd - 17 th WWC |
| | | Men's Nanquan | 5 th - 17 th WWC |
| 2 | Walid LACHKAR | Men's Changquan | 8 th - 17 th WWC |
| 3 | Basma LACHKAR | Women's Taijijian | 6 th - 17 th WWC |

4. CAN (Canada)

| No. | Name | Event | Qualification Way |
|-----|-----------------|-----------------|---|
| 1 | Brandon J LUO | Men's Taijiqian | 7 th - 17 th WWC |
| 2 | Erica Jia Yi LI | Women's Jianshu | 9 th - 17 th WWC |
| 3 | Rasa RAHNEMA | Men's Nandao | 10 th - 17 th WWC |

5. CHN (People's Republic of China)

| No. | Name | Event | Qualification Way |
|-----|------------|-----------------|--|
| 1 | Hongjie DU | Men's Nanquan | 1 st - 17 th WWC |
| 2 | Haonan GAO | Men's Taijijian | 1 st - 17 th WWC |
| 3 | Yalin YANG | Men's Changquan | 1 st - 17 th WWC |



| | | | |
|---|--------------|-------------------|--|
| 4 | Xiaobin GAO | Men's Gunshu | 1 st - 17 th WWC |
| 5 | Xueshi HAN | Women's Gunshu | 1 st - 17 th WWC |
| 6 | Yawen WANG | Women's Jianshu | 1 st - 17 th WWC |
| 7 | Xu WU | Women's Taijiquan | 1 st - 17 th WWC |
| 8 | Yaling ZHANG | Women's Nandao | 1 st - 17 th WWC |

6. EGY (Egypt)

| No. | Name | Event | Qualification Way |
|-----|-------------|----------------|--|
| 1 | Roaa KHALED | Women's Nangun | 9 th - 17 th WWC |
| | | Women's Nandao | 9 th - 17 th WWC |

7. FRA (France)

| No. | Name | Event | Qualification Way |
|-----|--------------|-----------------|--|
| 1 | Loan DROUARD | Men's Changquan | 4 th - 17 th WWC |
| | | Men's Gunshu | 2 nd - 17 th WWC |

8. HKG (Hong Kong, China)

| No. | Name | Event | Qualification Way |
|-----|--------------------|-------------------|--|
| 1 | Chi Lung LAU | Men's Nandao | 1 st - 17 th WWC |
| | | Men's Nangun | 1 st - 17 th WWC |
| 2 | Tak Yan Samuei HUI | Men's Taijiquan | 2 nd - 17 th WWC |
| | | Men's Taijijian | 2 nd - 17 th WWC |
| 3 | Chung Hei YEUNG | Men's Taijijian | 5 th - 17 th WWC |
| 4 | Jinsong CHEN | Men's Jianshu | 3 rd - 17 th WWC |
| 5 | Michelle YEUNG | Women's Daoshu | 2 nd - 17 th WWC |
| | | Women's Changquan | 2 nd - 17 th WWC |
| | | Women's Duilian | 3 rd - 17 th WWC |
| 6 | Hui Yu Lydia SHAM | Women's Changquan | 1 st - 17 th WWC |
| | | Women's Qiangshu | 4 th - 17 th WWC |
| | | Women's Duilian | 3 rd - 17 th WWC |



9. INA (Indonesia)

| No. | Name | Event | Qualification Way |
|-----|----------------------|-------------------|--|
| 1 | Terrence TJAHYADI | Men's Nangun | 4 th - 17 th WWC |
| 2 | Edgar Xavier MARVELO | Men's Changquan | 3 rd - 17 th WWC |
| | | Men's Duilian | 2 nd - 17 th WWC |
| 3 | Seraf Naro SIREGAR | Men's Daoshu | 1 st - 17 th WWC |
| | | Men's Duilian | 2 nd - 17 th WWC |
| | | Men's Changquan | 9 th - 17 th WWC |
| 4 | Ahmad Ghifari FUAIZ | Men's Jianshu | 4 th - 17 th WWC |
| | | Men's Qiangshu | 4 th - 17 th WWC |
| | | Men's Duilian | 2 nd - 17 th WWC |
| 5 | Eugenia Diva WIDODO | Women's Daoshu | 5 th - 17 th WWC |
| | | Women's Changquan | 4 th - 17 th WWC |
| | | Women's Duilian | 5 th - 17 th WWC |
| 6 | Patricia GERALDINE | Women's Changquan | 5 th - 17 th WWC |
| | | Women's Qiangshu | 2 nd - 17 th WWC |
| 7 | Tasya Ayu Puspa DEWI | Women's Nanquan | 6 th - 17 th WWC |
| | | Women's Duilian | 5 th - 17 th WWC |
| | | Women's Nandao | 4 th - 17 th WWC |

10. IND (India)

| No. | Name | Event | Qualification Way |
|-----|----------------------------|-------------------|---|
| 1 | Suraj Singh MAYANGLAMBAM | Men's Gunshu | 8 th - 17 th WWC |
| | | Men's Changquan | 10 th - 17 th WWC |
| 2 | Nyeman WANGSU | Women's Daoshu | 7 th - 17 th WWC |
| | | Women's Changquan | 8 th - 17 th WWC |
| | | Women's Duilian | 8 th - 17 th WWC |
| 3 | Langlontombi Devi HANJABAM | Women's Duilian | 8 th - 17 th WWC |

11. IRI (Iran)

| No. | Name | Event | Qualification Way |
|-----|------|-------|-------------------|
|-----|------|-------|-------------------|



| | | | |
|---|----------------------|------------------|--|
| 1 | Shahin BANITALEBI | Men's Nanquan | 7 th - 17 th WWC |
| | | Men's Nandao | 3 rd - 17 th WWC |
| 2 | Mostafa HASSANZADEH | Men's Nandao | 5 th - 17 th WWC |
| | | Men's Nangun | 6 th - 17 th WWC |
| 3 | Abolfazl GHAREHBAGHI | Men's Jianshu | 7 th - 17 th WWC |
| 4 | Zahra KIANI | Women's Qiangshu | 1 st - 17 th WWC |
| | | Women's Jianshu | 4 th - 17 th WWC |
| | | Women's Duilian | 4 th - 17 th WWC |
| 5 | Helia ASADIAN | Women's Nangun | 4 th - 17 th WWC |
| | | Women's Nanquan | 8 th - 17 th WWC |
| | | Women's Duilian | 4 th - 17 th WWC |

12. ITA (Italy)

| No. | Name | Event | Qualification Way |
|-----|--------------------|-----------------|---|
| 1 | Dario STELLUTI | Men's Nanquan | 11 th - 17 th WWC |
| 2 | Lara COSSA | Women's Nandao | 11 th - 17 th WWC |
| 3 | Alessia TARTUFOLI | Women's Nandao | 12 th - 17 th WWC |
| | | Women's Duilian | 2 nd - 17 th WWC |
| 4 | Jasmine Chu Yi ZHU | Women's Duilian | 2 nd - 17 th WWC |

13. JPN (Japan)

| No. | Name | Event | Qualification Way |
|-----|-----------------|-------------------|--|
| 1 | Tomohiro ARAYA | Men's Taijiquan | 6 th - 17 th WWC |
| | | Men's Taijijian | 3 rd - 17 th WWC |
| 2 | Ibuki TAKAGI | Men's Daoshu | 7 th - 17 th WWC |
| | | Men's Gunshu | 6 th - 17 th WWC |
| 3 | Motoyoshi ARAKI | Men's Qiangshu | 3 rd - 17 th WWC |
| | | Men's Jianshu | 5 th - 17 th WWC |
| 4 | Kana IKEUCHI | Women's Daoshu | 3 rd - 17 th WWC |
| | | Women's Changquan | 6 th - 17 th WWC |
| 5 | Shiho SAITO | Women's Taijijian | 1 st - 17 th WWC |



| | | | |
|---|-------------|-------------------|--|
| | | Women's Taijiquan | 3 rd - 17 th WWC |
| 6 | Nanoha KIDA | Women's Jianshu | 2 nd - 17 th WWC |

14. KOR (Republic of Korea)

| No. | Name | Event | Qualification Way |
|-----|--------------|-----------------|--|
| 1 | Donghae YUN | Men's Nangun | 7 th - 17 th WWC |
| | | Men's Duilian | 7 th - 17 th WWC |
| | | Men's Nanquan | 9 th - 17 th WWC |
| 2 | Hasung LEE | Men's Daoshu | 5 th - 17 th WWC |
| | | Men's Gunshu | 3 rd - 17 th WWC |
| | | Men's Duilian | 7 th - 17 th WWC |
| 3 | Hyeonggi AN | Men's Taijiquan | 1 st - 17 th WWC |
| 4 | Yonghyun LEE | Men's Changquan | 2 nd - 17 th WWC |
| | | Men's Duilian | 7 th - 17 th WWC |
| 5 | Gabin KO | Women's Gunshu | 7 th - 17 th WWC |
| 6 | Siwoo BYUN | Women's Nangun | 3 rd - 17 th WWC |
| | | Women's Nanquan | 1 st - 17 th WWC |

15. MAC (Macao, China)

| No. | Name | Event | Qualification Way |
|-----|-----------------|-------------------|--|
| 1 | Chi Kuan SONG | Men's Changquan | 7 th - 17 th WWC |
| | | Men's Qiangshu | 8 th - 17 th WWC |
| 2 | Ka Hou CHIN | Men's Jianshu | 2 nd - 17 th WWC |
| | | Men's Qiangshu | 5 th - 17 th WWC |
| | | Men's Duilian | 1 st - 17 th WWC |
| 3 | Cheok leong LEI | Men's Duilian | 1 st - 17 th WWC |
| 4 | Chi Ngou CHAN | Men's Nanquan | 8 th - 17 th WWC |
| | | Men's Nandao | 4 th - 17 th WWC |
| 5 | Chi Hin KUONG | Men's Qiangshu | 2 nd - 17 th WWC |
| | | Men's Duilian | 1 st - 17 th WWC |
| 6 | Weng lan WONG | Women's Changquan | 7 th - 17 th WWC |



| | | | |
|---|-------------|-----------------|--|
| | | Women's Jianshu | 3 rd - 17 th WWC |
| | | Women's Duilian | 7 th - 17 th WWC |
| 7 | Cho Man SOU | Women's Daoshu | 6 th - 17 th WWC |
| | | Women's Gunshu | 2 nd - 17 th WWC |
| | | Women's Duilian | 7 th - 17 th WWC |
| 8 | Sam In WONG | Women's Nanquan | 5 th - 17 th WWC |

16. MAS (Malaysia)

| No. | Name | Event | Qualification Way |
|-----|---------------------|-------------------|--|
| 1 | Zi Hong WONG | Men's Taijiquan | 8 th - 17 th WWC |
| | | Men's Taijijian | 7 th - 17 th WWC |
| 2 | Shin Peng SI | Men's Jianshu | 1 st - 17 th WWC |
| | | Men's Qiangshu | 1 st - 17 th WWC |
| | | Men's Duilian | 3 rd - 17 th WWC |
| 3 | Clement Su Wei TING | Men's Gunshu | 5 th - 17 th WWC |
| | | Men's Daoshu | 4 th - 17 th WWC |
| | | Men's Duilian | 3 rd - 17 th WWC |
| 4 | Bryan Kai Jie TI | Men's Nandao | 7 th - 17 th WWC |
| | | Men's Nangun | 5 th - 17 th WWC |
| | | Men's Duilian | 3 rd - 17 th WWC |
| 5 | Jia Rong LEE | Women's Daoshu | 1 st - 17 th WWC |
| | | Women's Gunshu | 3 rd - 17 th WWC |
| | | Women's Duilian | 1 st - 17 th WWC |
| 6 | Cheong Min TAN | Women's Nandao | 2 nd - 17 th WWC |
| | | Women's Nangun | 1 st - 17 th WWC |
| | | Women's Duilian | 1 st - 17 th WWC |
| 7 | Sydney Sy Xuan CHIN | Women's Taijiquan | 4 th - 17 th WWC |
| | | Women's Taijijian | 7 th - 17 th WWC |
| 8 | Pui Yee PANG | Women's Qiangshu | 5 th - 17 th WWC |
| | | Women's Duilian | 1 st - 17 th WWC |



17. MEX (Mexico)

| No. | Name | Event | Qualification Way |
|-----|----------------------|----------------|---|
| 1 | Virginia RIVERA VERA | Women's Gunshu | 11 th - 17 th WWC |

18. NEP (Nepal)

| No. | Name | Event | Qualification Way |
|-----|-----------------|----------------|--|
| 1 | Bijay SINJALI | Men's Jianshu | 6 th - 17 th WWC |
| 2 | Sushmita TAMANG | Women's Daoshu | 8 th - 17 th WWC |

19. PHI (Philippines)

| No. | Name | Event | Qualification Way |
|-----|-------------------------|-------------------|--|
| 1 | Jones Llabres INSO | Men's Taijiquan | 5 th - 17 th WWC |
| | | Men's Taijijian | 8 th - 17 th WWC |
| 2 | Vincent VENTURA | Men's Duilian | 6 th - 17 th WWC |
| 3 | Mark Lester RAGAY | Men's Duilian | 6 th - 17 th WWC |
| 4 | Mark Anthony POLO | Men's Duilian | 6 th - 17 th WWC |
| 5 | Agatha Chrystenzen WONG | Women's Taijiquan | 7 th - 17 th WWC |
| | | Women's Taijijian | 3 rd - 17 th WWC |

20. POR (Portugal)

| No. | Name | Event | Qualification Way |
|-----|-------------|----------------|---|
| 1 | Silvia CRUZ | Women's Nandao | 10 th - 17 th WWC |

21. SGP (Singapore)

| No. | Name | Event | Qualification Way |
|-----|------------------|-----------------|--|
| 1 | Yu Xuan TAY | Men's Taijiquan | 3 rd - 17 th WWC |
| | | Men's Taijijian | 4 th - 17 th WWC |
| | | Men's Duilian | 5 th - 17 th WWC |
| 2 | Jun Kai CHAN | Men's Taijiquan | 4 th - 17 th WWC |
| | | Men's Duilian | 5 th - 17 th WWC |
| 3 | Jowen Si Wei LIM | Men's Daoshu | 2 nd - 17 th WWC |



| | | | |
|---|------------------------|-------------------|--|
| | | Men's Gunshu | 4 th - 17 th WWC |
| 4 | Zi Meng ONG | Men's Duilian | 5 th - 17 th WWC |
| 5 | Zeanne Zhi Ning LAW | Women's Taijiquan | 2 nd - 17 th WWC |
| | | Women's Taijijian | 2 nd - 17 th WWC |
| 6 | Vera Yan Ning TAN | Women's Taijiquan | 5 th - 17 th WWC |
| | | Women's Taijijian | 5 th - 17 th WWC |
| 7 | Xue Ling Cassandra ONG | Women's Nanquan | 7 th - 17 th WWC |
| | | Women's Nangun | 5 th - 17 th WWC |

22. TPE (Chinese Taipei)

| No. | Name | Event | Qualification Way |
|-----|-----------------|-------------------|--|
| 1 | Wen Sheng HUANG | Men's Nanquan | 4 th - 17 th WWC |
| | | Men's Nangun | 2 nd - 17 th WWC |
| 2 | Yu Hsuan CHENG | Men's Daoshu | 6 th - 17 th WWC |
| | | Men's Gunshu | 7 th - 17 th WWC |
| 3 | Tang Hsuan CHAO | Women's Nanquan | 2 nd - 17 th WWC |
| | | Women's Nangun | 2 nd - 17 th WWC |
| 4 | Yi Chen LIN | Women's Qiangshu | 7 th - 17 th WWC |
| 5 | Pei Hsun LIU | Women's Taijiquan | 8 th - 17 th WWC |
| | | Women's Taijijian | 4 th - 17 th WWC |

23. UKR (Ukraine)

| No. | Name | Event | Qualification Way |
|-----|------------------------|-------------------|---|
| 1 | Mykyta KOVALOV | Men's Nanquan | 10 th - 17 th WWC |
| | | Men's Duilian | 4 th - 17 th WWC |
| 2 | Volodymyr SHYINKARENKO | Men's Duilian | 4 th - 17 th WWC |
| 3 | Bohdan NAIDA | Men's Duilian | 4 th - 17 th WWC |
| 4 | Oryna IVANOVA | Women's Taijiquan | 6 th - 17 th WWC |
| 5 | Yana POLTORATSKA | Women's Qiangshu | 8 th - 17 th WWC |

24. USA (United States of America)



| No. | Name | Event | Qualification Way |
|-----|---------------|-----------------|--|
| 1 | Nathan LY | Men's Daoshu | 8 th - 17 th WWC |
| | | Men's Duilian | 8 th - 17 th WWC |
| 2 | Shaun CHEN | Men's Qiangshu | 6 th - 17 th WWC |
| | | Men's Duilian | 8 th - 17 th WWC |
| 3 | Leianna YUEN | Women's Nanquan | 3 rd - 17 th WWC |
| | | Women's Nangun | 6 th - 17 th WWC |
| 4 | Luke TIAN | Men's Taijijian | 6 th - 17 th WWC |
| 5 | Elena CHOW | Women's Daoshu | 4 th - 17 th WWC |
| | | Women's Gunshu | 4 th - 17 th WWC |
| 6 | Lucy LEE | Women's Nanquan | 4 th - 17 th WWC |
| 7 | Ashley OSHIBA | Women's Jianshu | 8 th - 17 th WWC |

25. UZB (Uzbekistan)

| No. | Name | Event | Qualification Way |
|-----|-----------------|----------------|--|
| 1 | Darya LATISHEVA | Women's Nandao | 5 th - 17 th WWC |
| | | Women's Nangun | 7 th - 17 th WWC |

26. VEN (Venezuela)

| No. | Name | Event | Qualification Way |
|-----|-----------------|----------------|---|
| 1 | Valeria DUDAMEL | Women's Gunshu | 10 th - 17 th WWC |

27. VIE (Vietnam)

| No. | Name | Event | Qualification Way |
|-----|---------------|------------------|--|
| 1 | Nguyen VAN SY | Men's Jianshu | 8 th - 17 th WWC |
| 2 | Duong THUY VI | Women's Jianshu | 6 th - 17 th WWC |
| | | Women's Qiangshu | 3 rd - 17 th WWC |

28. AIN (Individual Neutral Athletes)

| No. | Name | Event | Qualification Way |
|-----|-----------------------|--------------|--|
| 1 | Kirill-zui BONDARENKO | Men's Daoshu | 3 rd - 17 th WWC |



| | | | |
|---|----------------------|-------------------|--|
| 2 | Kamil KHALILIULIN | Men's Nandao | 8 th - 17 th WWC |
| | | Men's Nangun | 9 th - 17 th WWC |
| 3 | Sandra KONSTANTINOVA | Women's Changquan | 3 rd - 17 th WWC |
| | | Women's Gunshu | 8 th - 17 th WWC |
| 4 | Pavel MURATOV | Men's Qiangshu | 7 th - 17 th WWC |
| 5 | Aksiniia SCHUKINA | Women's Jianshu | 5 th - 17 th WWC |
| | | Women's Qiangshu | 6 th - 17 th WWC |
| 6 | Anastasiia KADENOVA | Women's Taijijian | 8 th - 17 th WWC |

Note: The above lists are subject to change depending on the registered athletes.



Annex 3

IWUF 4th TWC Waiver of Liabilities

| | | | | |
|---|--|--------------|--|----------------|
| Federation | | | | Color ID Photo |
| Name of Participant | | | | |
| Date of Birth | | Gender | | |
| Nationality | | Passport No. | | |
| Role of Participant | | | | |
| *Athlete *Team Manager *Coach *Doctor *Observer | | | | |

I, the undersigned, knowingly and without duress, do voluntarily submit my Entry to IWUF 4th TWC. IWUF 4th TWC is hosted by the International Wushu Federation (IWUF) and organized by the Chinese Wushu Association and the City of Hainan, hereafter the Chinese Wushu Association and the City of Hainan are referred as "Organizing Committee". I understand and acknowledge that the participation in IWUF 4th TWC involves inherent risk of losses, damages or injuries, including but not limited to risks deriving from participating in the competition and trainings, in the use of the sporting facilities or equipment and/or risks arising from actions or omissions of other participants or other third parties. I further understand that my participation in IWUF 4th TWC is subject to my agreement and acceptance of this Waiver of Liabilities ("Waiver"). In consideration of the IWUF and the Organizing Committee accepting my application, I hereby assume all risk of physical and mental injuries, disabilities and losses which may result from or in connection with my participation in IWUF 4th TWC. Acting for myself, heirs, personal officers, agents, representatives and assignees, I do hereby release, to the extent permissible, the IWUF and the Organizing Committee including all associates, auxiliaries and affiliates, such as but not limited to their officers, agents, employees, representatives, volunteers, judges and referees and other related members from all claims, actions, suits, and controversies related to any loss, damage or injury by reason of any matter, cause or thing whatsoever that I may sustain as a result of or in connection with my participation in IWUF 4th TWC. I fully understand and acknowledge that it is my sole responsibility to determine whether I am fit and healthy enough to participate in any events without posing a risk to myself or others. I hereby certify that, to the best of my knowledge, this is the case. I understand to have a duty to inspect the state of the used sporting facilities and equipment, and I waive any claim arising out of any respective defect. I fully understand that all medical attention or treatment afforded to me by the IWUF and the Organizing Committee including all associates, auxiliaries and affiliates, e.g. their officers, medical personnel, representatives, employees, volunteers, and all other related members, will be of the first aid type only, and I hereby consent to receiving such treatment and release the IWUF and the Organizing Committee as well as their officers, representatives, volunteers, employees and all other related members from any liability for such aid. I understand it is my personal obligation to obtain my own medical coverage. I am fully and solely responsible for adequately insuring myself against injury and third-party risk (public liability), with such insurance to cover the period before, during and after the event. IWUF and the Organizing Committee including all associates are not



responsible in part or in whole for any damages or medical or hospital expenses incurred as a result of participation in IWUF 4th TWC.

I agree to abide by and follow the Rules established by the IWUF and the Organizing Committee and follow all received instructions. I acknowledge and agree that it is my personal responsibility to be informed about all afore-mentioned Rules and instructions. I agree that I will conduct myself in a professional and courteous manner at all times and to be subject to penalties and sanctions for violations related thereto, pursuant to the IWUF Constitution and the IWUF Ethics Code as updated from time to time and other Rules established by the IWUF and the Organizing Committee. I understand that any dispute must be resolved in accordance with the IWUF Constitution and any further applicable IWUF Rules. I agree that my performance, attendance, and participation at IWUF 4th TWC may be photographed, filmed or otherwise recorded or released or telecast live. I consent to allow the IWUF and the Organizing Committee use of my name, likeness, address, voices, poses, pictures, videos, live or non-live coverage and biographical and biological data concerning full or parts, in any form or language ("Identity, Voice and Image Data"), with or without other material, throughout the world, without limitation, for television, radio, video, theatrical medium picture, or any other medium and any other purpose by the IWUF or the Organizing Committee through any devices now known or hereafter devised and I do hereby waive any compensation in regard thereof as well as any future rights to the aforementioned. I also consent to the collecting, processing and use of all above-mentioned Identity, Voice and Image Data by the IWUF and the Organizing Committee for commercial and promotional services of sponsors and media partners as well as, where necessary, by third parties for the purpose of facilitating my participation an accreditation in the event (e.g. law enforcement authorities, border services agencies etc.).

Furthermore, while I note that the IWUF and the Organizing Committee will take into consideration my needs to rest, train and prepare for the events, I agree to be reasonably available during the Events for TV/digital/radio interviews, promotional or press photo sessions and press conferences at the dedicated areas.

If any provision of this Waiver is deemed to be invalid or unenforceable, the remaining provisions shall remain in full force and effect. This Waiver shall be governed by the IWUF Constitution, the further applicable Rules established by the IWUF and the Organizing Committee and, subsidiarily, by Swiss law.

I have read and fully understand the waiver listed above.

****For athletes under the age of 18 -This waiver must be signed by their parent or legal guardian****

| | | |
|--------------------------|---|-------------------------------|
| Signature of Participant | Signature of Parent/Legal Guardian | Name of Parent/Legal Guardian |
| | (If participant is under 18 years of age) | |
| Date | Date | Date |



Annex 4

IWUF 4th TWC Medical Certificate (Sample)

1. ATHLETE INFORMATION

| | | | | |
|---------------|--|---------------|--|----------------|
| Surname | | | | Color ID Photo |
| Given Name(s) | | | | |
| Country | | Postal Code | | |
| Passport No. | | Telephone. No | | |
| Email | | | | |
| Address | | | | |

2. QUESTIONS FOR ATHELETE (Attach relevant documents if you answered 'yes' to any of the following)

| | |
|--|--|
| Is a doctor currently treating you? | |
| Have you ever been unconscious or had a concussion? | |
| Have you been hit hard in the head in the last 6 months? | |
| Have you had any headache in the last 2 weeks? | |
| Do you have any problems with bleeding? | |
| Do any diseases run in your family? | |
| Have you had any surgery? | |
| Have you ever had to stay in a hospital? | |
| Do you have any medical condition? | |
| Do you have a history of seasonal or drug allergies? | |
| Is there a history of sudden death under 45 years old in the family? | |

3. MEDICAL DOCTOR INFORMATION

| | |
|---------------|--|
| Surname | |
| Given Name(s) | |
| Telephone No. | |
| Address | |



4. MEDICAL EXAMINATION

| Item | | | | Abnormalities |
|-----------------------|--|--------|----------|---------------|
| Head | Cranial nerves, eyes, pupil size and reactivity. Fundi. Vision by chart. | Normal | Abnormal | |
| | Mouth, teeth, throat | Normal | Abnormal | |
| | Ears | Normal | Abnormal | |
| | Temporomandibular joint | Normal | Abnormal | |
| | Brain Examination: electroencephalogram (EEG) Test (Sanda athletes only) | Normal | Abnormal | |
| Neck | Cervical spine, lymph nodes | Normal | Abnormal | |
| Chest | Breath sounds, rib, tenderness on compression | Normal | Abnormal | |
| Neurological System | Reflexes | Normal | Abnormal | |
| | Verbal responses | Normal | Abnormal | |
| | Motor responses and balance | Normal | Abnormal | |
| Cardiovascular System | Heart rate | Normal | Abnormal | |
| | Blood pressure | Normal | Abnormal | |
| | Heart examination: electrocardiogram (ECG) Test | Normal | Abnormal | |
| Medications Used | Name and dosage | Yes | No | |

5. DOCTOR CONFIRMATION

| | |
|--|-------------------------------|
| I confirm that the Athlete is <input type="checkbox"/> fit / <input type="checkbox"/> not fit to participate in the competition. | Signature: Place/Date: |
|--|-------------------------------|

6. NATIONAL FEDERATION CONFIRMATION

I confirm that the above information provided is true and correct.

| | | | |
|-------------------------|--|--|-------|
| National Federation | | | |
| Name of Representative | | | |
| Title of Representative | | | |
| Signature: | | | Date: |

International Wushu Federation (IWUF) Brand Control Guidelines for Wushu Competition Uniforms (excerpt)

1. PURPOSE

To ensure sponsor and manufacture rights by establishing a standard for brand placement on uniforms and other clothing items used during IWUF wushu competition.

2. STANDARDS AND GUIDELINES

Uniforms of athletes, coaches and team officials

3. GENERAL REQUIREMENTS

The manufacturer logo may appear once on each piece of clothing, with an area of up to 20 cm². Note that only the quantity and size of logos appearing on uniforms will be assessed during the competition, and logos will not be reviewed for accuracy or adherence to brand standards.

The manufacturer logo may appear once on each accessory item (paired accessories are considered as two items), with an area of up to 6 cm².

A manufacturer logo may appear once on each shoe or foot item (paired shoes or foot items are considered as two items), with an area of up to 6 cm².

A national/regional Olympic Committee flag, a national/regional wushu federation flag/logo may each appear once where specified, with an area of up to 20 cm² each.

4. WUSHU TAOLU COMPETITION UNIFORM REQUIREMENTS

4.1 Top/Jacket

● Front

No advertisements or logos may appear on the collar.

A flag may appear on the left chest area, with an area of up to 20 cm².

The manufacturer logo may appear on the right chest area, with an area of up to 20 cm².

No advertisements may appear in other areas.

● Back

Sponsor or other logos may be displayed in other areas. The total number of sponsor or other logos may not exceed three (3), with a maximum area of 20 cm² each.

4.2 Pants/Trousers

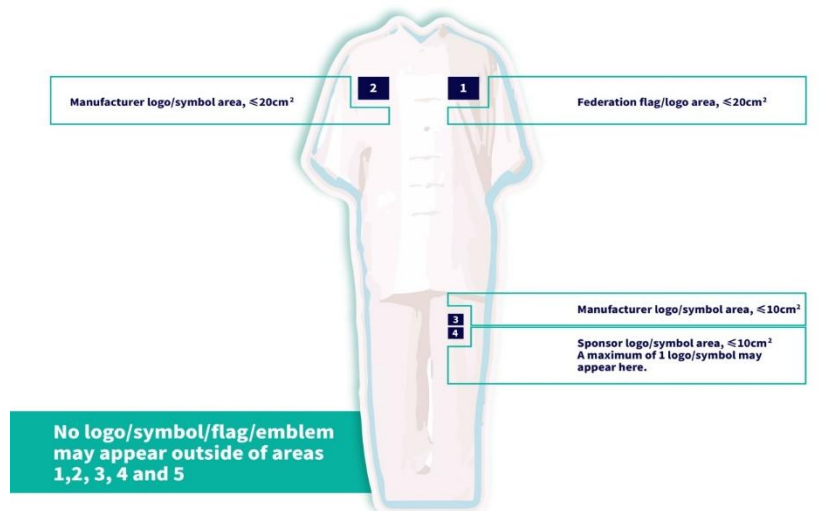
● *Left leg*

The manufacturer logo may be arranged on the top, with an area of up to 10 cm².

Sponsor logos may appear below the manufacturer's logo but may not appear within 5 cm of the manufacturer's logo, with an area of up to 10 cm².

● *Right leg*

No logo, flag, or other emblem may appear.



WU C S

IWUF APP



- RECOGNIZED BY / IN PARTNERSHIP WITH -

International Federation
recognised by the



International
Olympic
Committee



INTERNATIONAL SCHOOL SPORT FEDERATION



- OFFICIAL SOCIAL MEDIA PLATFORMS -



- IWUF APP -



- IWUF GLOBAL PARTNER -



- IWUF GLOBAL SUPPLIER -

